

Product datasheet for **TA365989**

HLA-DPB1 Rabbit Polyclonal Antibody

Product data:

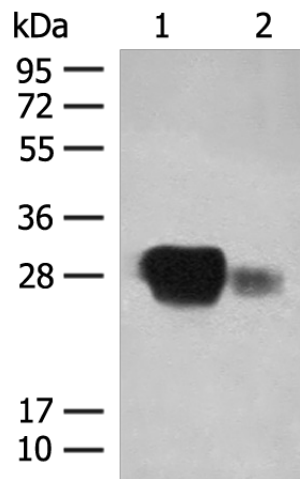
Product Type:	Primary Antibodies
Applications:	IHC, WB
Recommended Dilution:	WB: 500-2000 WB positive control: Raji cell and Human spleen tissue lysates IHC: 20-100 Positive control: Human cervical cancer Predicted cell location: Cytoplasm and Cell membrane
Reactivity:	Human
Host:	Rabbit
Isotype:	IgG
Clonality:	Polyclonal
Immunogen:	Fusion protein of human HLA-DPB1
Formulation:	pH7.4 PBS, 0.05% NaN ₃ , 40% Glycerol
Concentration:	lot specific
Purification:	Antigen affinity purification
Conjugation:	Unconjugated
Storage:	Store at -20°C.
Stability:	1 year
Predicted Protein Size:	29 kDa
Gene Name:	major histocompatibility complex, class II, DP beta 1
Database Link:	Entrez Gene 3115 Human P04440



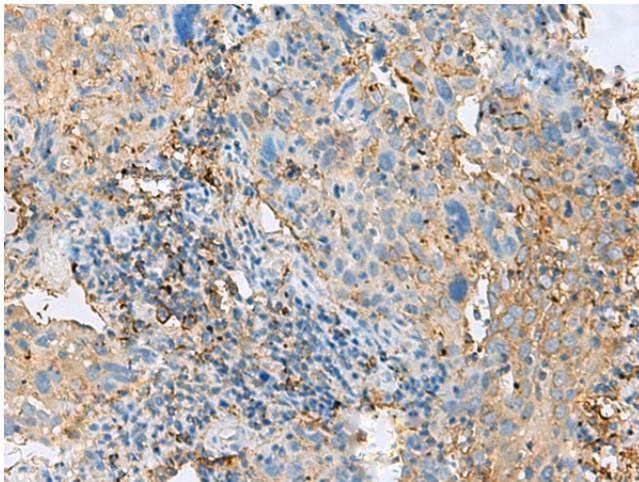
[View online »](#)

Background:

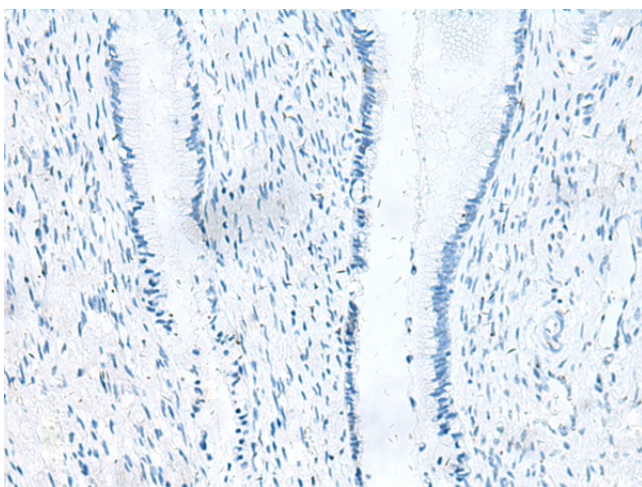
HLA-DPB belongs to the HLA class II beta chain paralogues. This class II molecule is a heterodimer consisting of an alpha (DPA) and a beta chain (DPB), both anchored in the membrane. It plays a central role in the immune system by presenting peptides derived from extracellular proteins. Class II molecules are expressed in antigen presenting cells (APC: B lymphocytes, dendritic cells, macrophages). The beta chain is approximately 26-28 kDa and its gene contains 6 exons. Exon one encodes the leader peptide, exons 2 and 3 encode the two extracellular domains, exon 4 encodes the transmembrane domain and exon 5 encodes the cytoplasmic tail. Within the DP molecule both the alpha chain and the beta chain contain the polymorphisms specifying the peptide binding specificities, resulting in up to 4 different molecules.

Product images:


Gel: 12%SDS-PAGE
 Lysate: 40 µg
 Lane 1-2: Raji cell and Human spleen tissue lysates
 Primary antibody: TA365989 (HLA-DPB1 Antibody) at dilution 1/350
 Secondary antibody: Goat anti rabbit IgG at 1/8000 dilution
 Exposure time: 3 seconds



Immunohistochemistry of paraffin-embedded Human cervical cancer tissue using TA365989 (HLA-DPB1 Antibody) at dilution 1/50 (Original magnification: ×200)



Immunohistochemistry of paraffin-embedded Human cervical cancer tissue using TA365989 (HLA-DPB1 Antibody) at dilution 1/50, treated with fusion protein. (Original magnification: $\times 200$)