

## Product datasheet for **TA365985S**

### MDFI Rabbit Polyclonal Antibody

#### Product data:

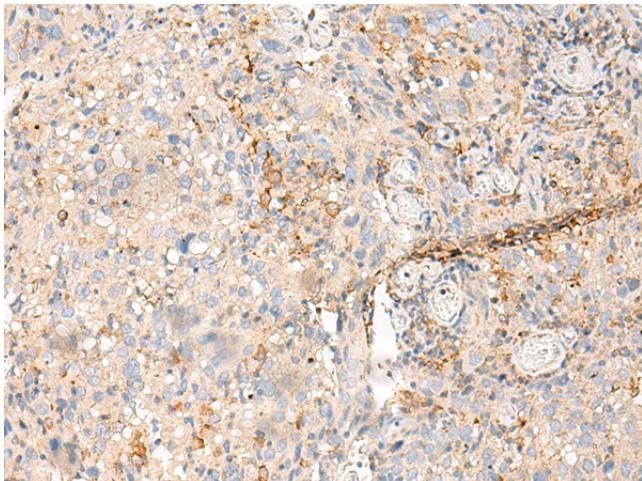
Product Type:	Primary Antibodies
Applications:	IHC
Recommended Dilution:	IHC: 50-300 Positive control: Human cervical cancer Predicted cell location: Cytoplasm or Nucleus
Reactivity:	Human, Rat
Host:	Rabbit
Isotype:	IgG
Clonality:	Polyclonal
Immunogen:	Fusion protein of human MDFI
Formulation:	pH7.4 PBS, 0.05% NaN <sub>3</sub> , 40% Glycerol
Purification:	Antigen affinity purification
Conjugation:	Unconjugated
Storage:	Store at -20°C.
Stability:	1 year
Gene Name:	MyoD family inhibitor
Database Link:	<a href="#">Entrez Gene 4188 Human Q99750</a>

**Background:** This protein is a transcription factor that negatively regulates other myogenic family proteins. Studies of the mouse homolog, I-mf, show that it interferes with myogenic factor function by masking nuclear localization signals and preventing DNA binding. Knockout mouse studies show defects in the formation of vertebrae and ribs that also involve cartilage formation in these structures.

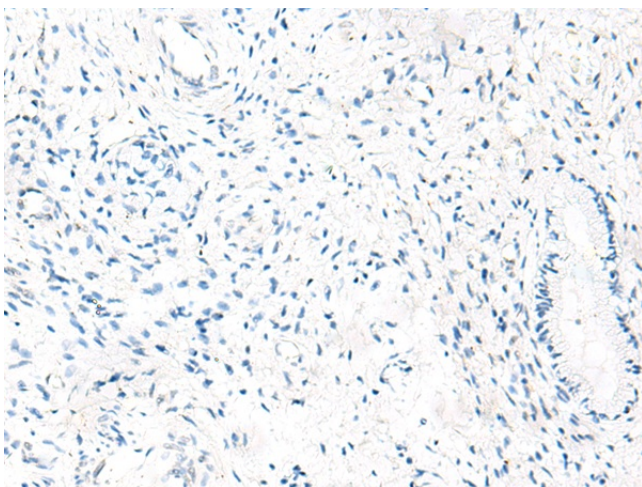
**Synonyms:** I-MF; I-mfa; OTTHUMP00000196414



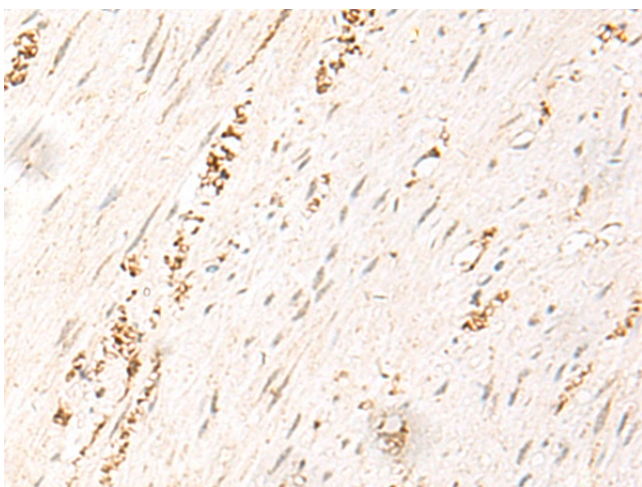
[View online »](#)

**Product images:**

Immunohistochemistry of paraffin-embedded Human cervical cancer tissue using [TA365985] (MDFI Antibody) at dilution 1/50 (Original magnification: ×200)



Immunohistochemistry of paraffin-embedded Human cervical cancer tissue using [TA365985] (MDFI Antibody) at dilution 1/50, treated with fusion protein. (Original magnification: ×200)



Immunohistochemistry of paraffin-embedded Human colorectal cancer tissue using [TA365985] (MDFI Antibody) at dilution 1/50 (Original magnification:  $\times 200$ )



Immunohistochemistry of paraffin-embedded Human colorectal cancer tissue using [TA365985] (MDFI Antibody) at dilution 1/50, treated with fusion protein. (Original magnification:  $\times 200$ )