

Product datasheet for **TA365979**

RPL10L Rabbit Polyclonal Antibody

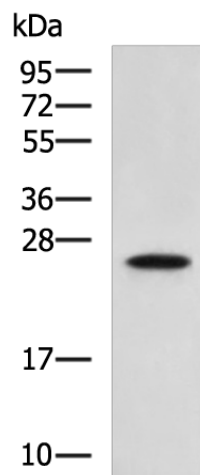
Product data:

Product Type:	Primary Antibodies
Applications:	IHC, WB
Recommended Dilution:	WB: 1000-5000 WB positive control: Jurkat cell lysate IHC: 100-200 Positive control: Human cervical cancer Predicted cell location: Cytoplasm
Reactivity:	Human, Mouse
Host:	Rabbit
Isotype:	IgG
Clonality:	Polyclonal
Immunogen:	Fusion protein of human RPL10L
Formulation:	pH7.4 PBS, 0.05% NaN ₃ , 40% Glycerol
Concentration:	lot specific
Purification:	Antigen affinity purification
Conjugation:	Unconjugated
Storage:	Store at -20°C.
Stability:	1 year
Predicted Protein Size:	25 kDa
Gene Name:	ribosomal protein L10 like
Database Link:	Entrez Gene 140801 Human Q96L21
Background:	This gene encodes a protein sharing sequence similarity with ribosomal protein L10. It is not currently known whether the encoded protein is a functional ribosomal protein or whether it has evolved a function that is independent of the ribosome. This gene is intronless.
Synonyms:	FLJ27353; RPL10_5_1358

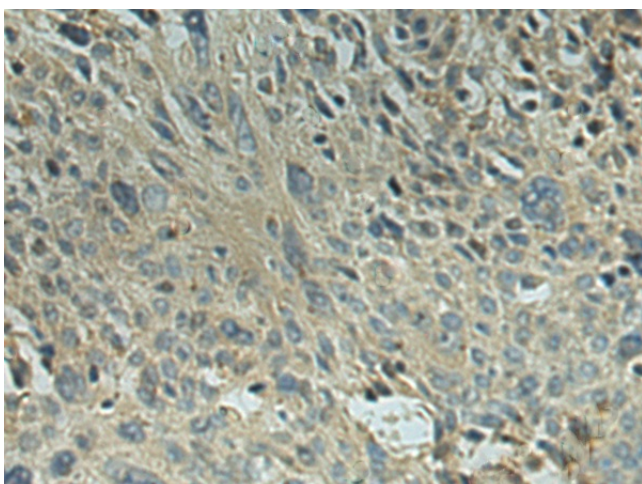


[View online »](#)

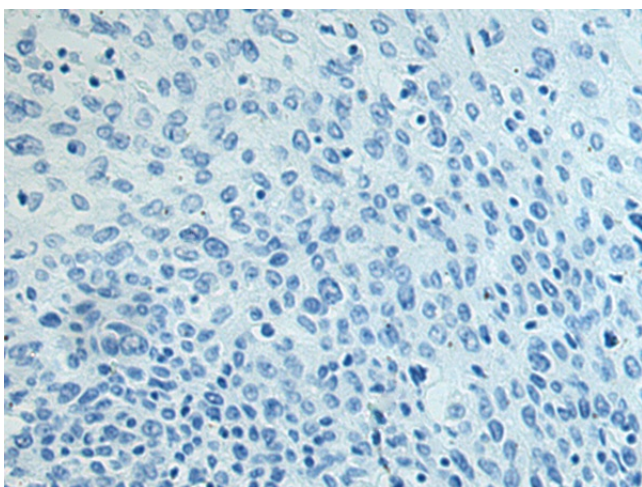
Product images:



Gel: 12%SDS-PAGE
Lysate: 40 μ g
Lane: Jurkat cell lysate
Primary antibody: TA365979 (RPL10L Antibody) at dilution 1/1000
Secondary antibody: Goat anti rabbit IgG at 1/5000 dilution
Exposure time: 15 seconds



Immunohistochemistry of paraffin-embedded Human cervical cancer tissue using TA365979 (RPL10L Antibody) at dilution 1/170 (Original magnification: \times 200)



Immunohistochemistry of paraffin-embedded Human cervical cancer tissue using TA365979 (RPL10L Antibody) at dilution 1/170, treated with fusion protein. (Original magnification: ×200)