

## Product datasheet for **TA365978**

### PCTP Rabbit Polyclonal Antibody

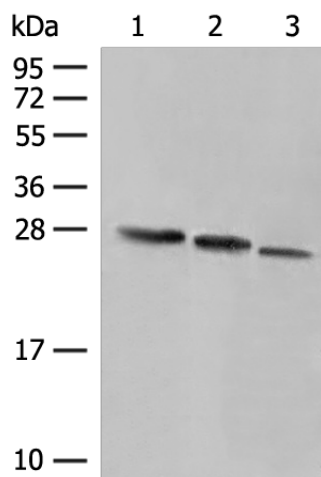
#### Product data:

Product Type:	Primary Antibodies
Applications:	IHC, WB
Recommended Dilution:	WB: 200-1000 WB positive control: Human fetal liver tissue, HepG2 cell, Human placenta tissue lysates IHC: 40-200 Positive control: Human tonsil Predicted cell location: Cytoplasm or Nucleus
Reactivity:	Human, Mouse
Host:	Rabbit
Isotype:	IgG
Clonality:	Polyclonal
Immunogen:	Fusion protein of human PCTP
Formulation:	pH7.4 PBS, 0.05% NaN <sub>3</sub> , 40% Glycerol
Concentration:	lot specific
Purification:	Antigen affinity purification
Conjugation:	Unconjugated
Storage:	Store at -20°C.
Stability:	1 year
Predicted Protein Size:	25 kDa
Gene Name:	phosphatidylcholine transfer protein
Database Link:	<a href="#">Entrez Gene 58488 Human</a> <a href="#">Q9UKL6</a>
Background:	Catalyzes the transfer of phosphatidylcholine between membranes. Binds a single lipid molecule.
Synonyms:	PC-TP; STARD2

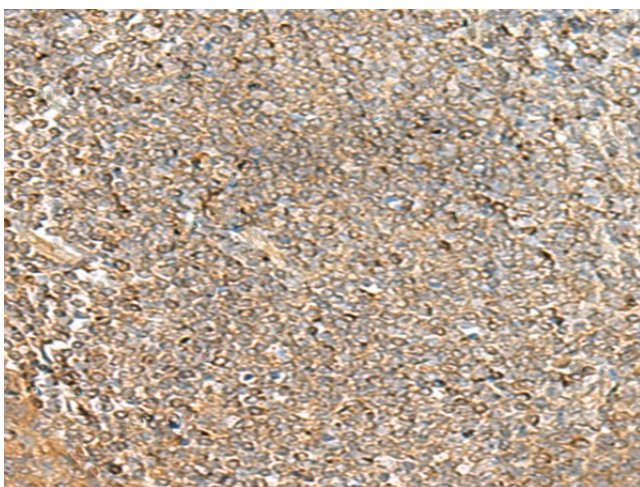


[View online »](#)

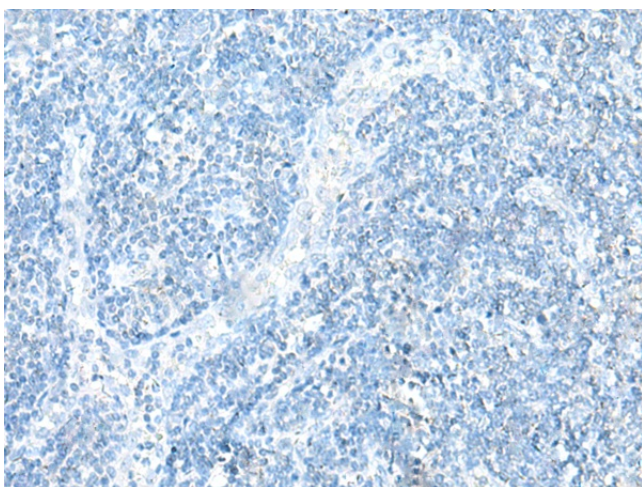
## Product images:



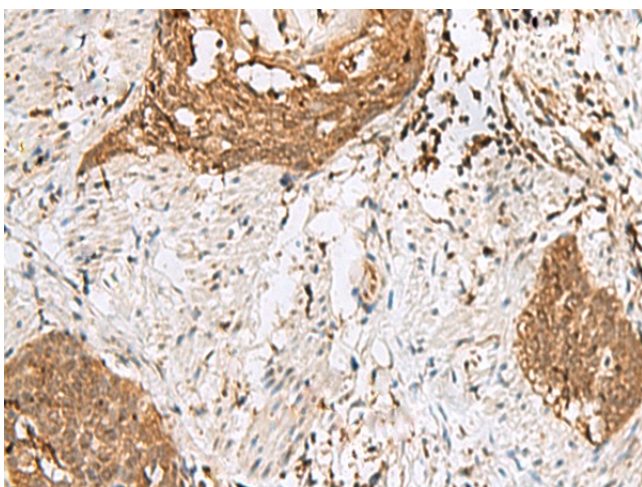
Gel: 12%SDS-PAGE  
 Lysate: 40 µg  
 Lane 1-3: Human fetal liver tissue  
 HepG2 cell  
 Human placenta tissue lysates  
 Primary antibody: TA365978 (PCTP Antibody) at dilution 1/250  
 Secondary antibody: Goat anti rabbit IgG at 1/8000 dilution  
 Exposure time: 1 minute



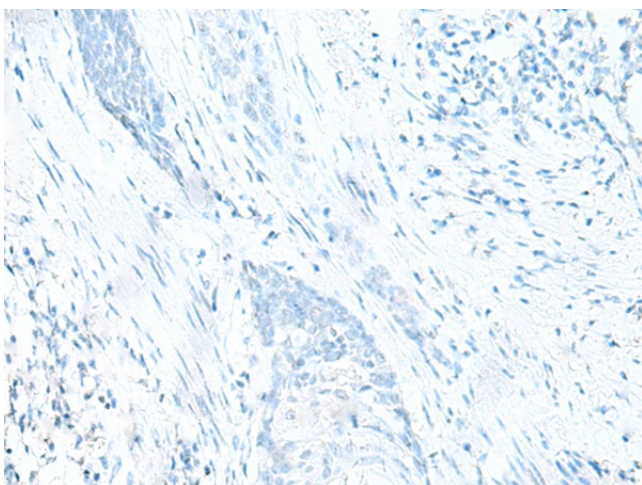
Immunohistochemistry of paraffin-embedded Human tonsil tissue using TA365978 (PCTP Antibody) at dilution 1/30 (Original magnification: ×200)



Immunohistochemistry of paraffin-embedded Human tonsil tissue using TA365978 (PCTP Antibody) at dilution 1/30, treated with fusion protein. (Original magnification: ×200)



Immunohistochemistry of paraffin-embedded Human esophagus cancer tissue using TA365978 (PCTP Antibody) at dilution 1/30 (Original magnification: ×200)



Immunohistochemistry of paraffin-embedded Human esophagus cancer tissue using TA365978 (PCTP Antibody) at dilution 1/30, treated with fusion protein. (Original magnification: ×200)