

## Product datasheet for **TA365972S**

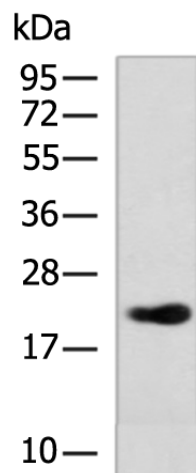
### TMA16 Rabbit Polyclonal Antibody

#### Product data:

Product Type:	Primary Antibodies
Applications:	IHC, WB
Recommended Dilution:	WB: 500-2000 WB positive control: Hela cell lysate IHC: 100-200 Positive control: Human tonsil Predicted cell location: Nucleus and Cytoplasm
Reactivity:	Human
Host:	Rabbit
Isotype:	IgG
Clonality:	Polyclonal
Immunogen:	Fusion protein of human TMA16
Formulation:	pH7.4 PBS, 0.05% NaN <sub>3</sub> , 40% Glycerol
Purification:	Antigen affinity purification
Conjugation:	Unconjugated
Storage:	Store at -20°C.
Stability:	1 year
Predicted Protein Size:	24 kDa
Gene Name:	translation machinery associated 16 homolog
Database Link:	<a href="#">Entrez Gene 55319 Human</a> <a href="#">Q96EY4</a>
Background:	The function of this protein remains unknown.
Synonyms:	C4orf43

[View online »](#)

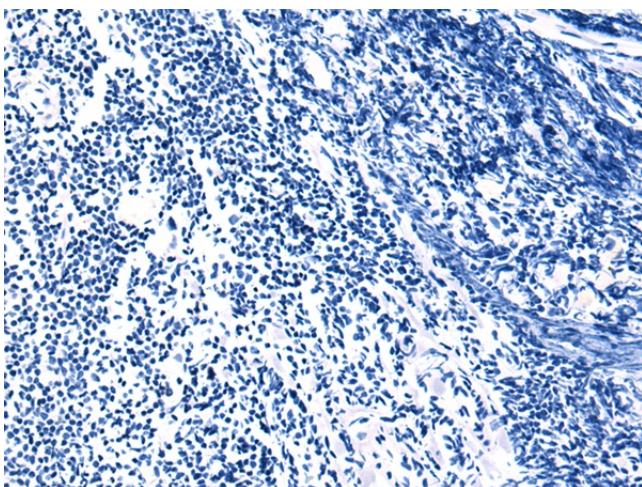
## Product images:



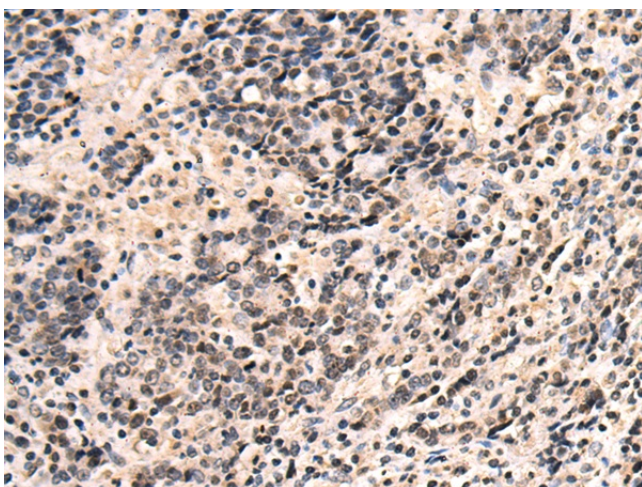
Gel: 8%SDS-PAGE  
Lysate: 40 µg  
Lane: HeLa cell lysate  
Primary antibody: [TA365972] (TMA16 Antibody)  
at dilution 1/800  
Secondary antibody: Goat anti rabbit IgG at  
1/5000 dilution  
Exposure time: 1 minute



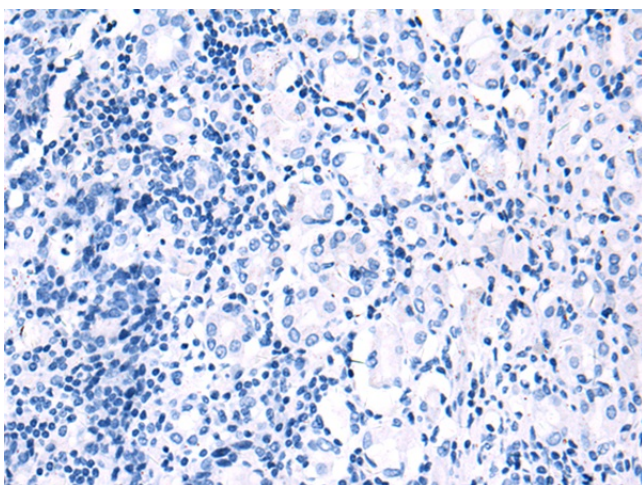
Immunohistochemistry of paraffin-embedded  
Human tonsil tissue using [TA365972] (TMA16  
Antibody) at dilution 1/135 (Original  
magnification: ×200)



Immunohistochemistry of paraffin-embedded Human tonsil tissue using [TA365972] (TMA16 Antibody) at dilution 1/135, treated with fusion protein. (Original magnification: ×200)



Immunohistochemistry of paraffin-embedded Human gastric cancer tissue using [TA365972] (TMA16 Antibody) at dilution 1/135 (Original magnification: ×200)



Immunohistochemistry of paraffin-embedded Human gastric cancer tissue using [TA365972] (TMA16 Antibody) at dilution 1/135, treated with fusion protein. (Original magnification: ×200)