

Product datasheet for **TA365972**

TMA16 Rabbit Polyclonal Antibody

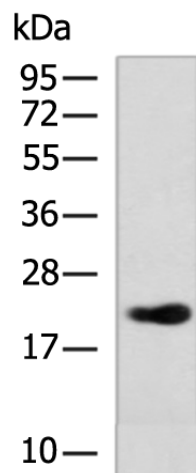
Product data:

Product Type:	Primary Antibodies
Applications:	IHC, WB
Recommended Dilution:	WB: 500-2000 WB positive control: Hela cell lysate IHC: 100-200 Positive control: Human tonsil Predicted cell location: Nucleus and Cytoplasm
Reactivity:	Human
Host:	Rabbit
Isotype:	IgG
Clonality:	Polyclonal
Immunogen:	Fusion protein of human TMA16
Formulation:	pH7.4 PBS, 0.05% NaN ₃ , 40% Glycerol
Concentration:	lot specific
Purification:	Antigen affinity purification
Conjugation:	Unconjugated
Storage:	Store at -20°C.
Stability:	1 year
Predicted Protein Size:	24 kDa
Gene Name:	translation machinery associated 16 homolog
Database Link:	Entrez Gene 55319 Human Q96EY4
Background:	The function of this protein remains unknown.
Synonyms:	C4orf43



[View online »](#)

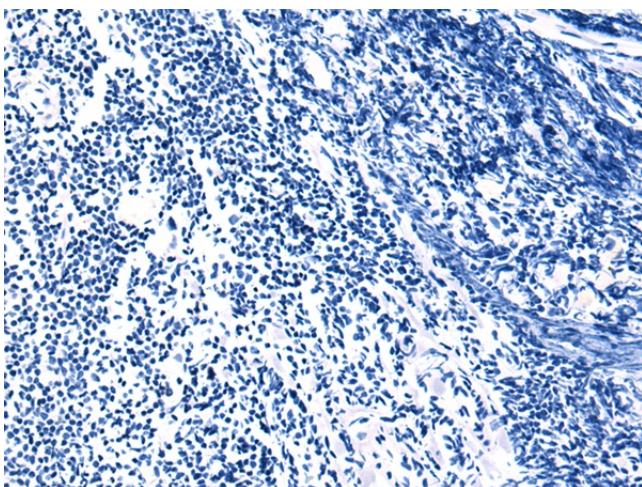
Product images:



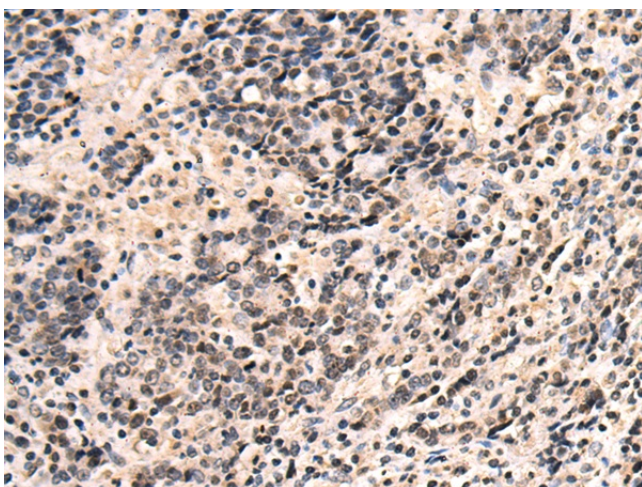
Gel: 8%SDS-PAGE
Lysate: 40 µg
Lane: HeLa cell lysate
Primary antibody: TA365972 (TMA16 Antibody) at dilution 1/800
Secondary antibody: Goat anti rabbit IgG at 1/5000 dilution
Exposure time: 1 minute



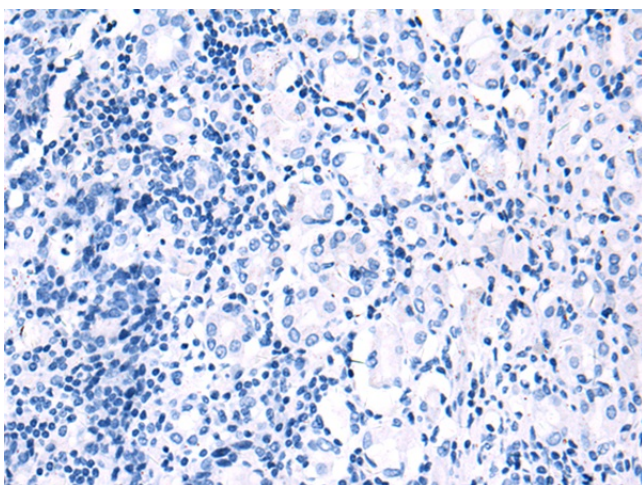
Immunohistochemistry of paraffin-embedded Human tonsil tissue using TA365972 (TMA16 Antibody) at dilution 1/135 (Original magnification: ×200)



Immunohistochemistry of paraffin-embedded Human tonsil tissue using TA365972 (TMA16 Antibody) at dilution 1/135, treated with fusion protein. (Original magnification: ×200)



Immunohistochemistry of paraffin-embedded Human gastric cancer tissue using TA365972 (TMA16 Antibody) at dilution 1/135 (Original magnification: ×200)



Immunohistochemistry of paraffin-embedded Human gastric cancer tissue using TA365972 (TMA16 Antibody) at dilution 1/135, treated with fusion protein. (Original magnification: ×200)