

Product datasheet for **TA365971**

Tetranectin (CLEC3B) Rabbit Polyclonal Antibody

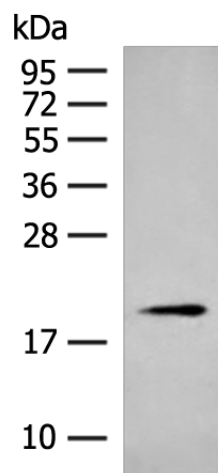
Product data:

Product Type:	Primary Antibodies
Applications:	IHC, WB
Recommended Dilution:	WB: 200-1000 WB positive control: Mouse spleen tissue lysate IHC: 25-100 Positive control: Human tonsil Predicted cell location: Cytoplasm
Reactivity:	Human, Mouse
Host:	Rabbit
Isotype:	IgG
Clonality:	Polyclonal
Immunogen:	Fusion protein of human CLEC3B
Formulation:	pH7.4 PBS, 0.05% NaN ₃ , 40% Glycerol
Concentration:	lot specific
Purification:	Antigen affinity purification
Conjugation:	Unconjugated
Storage:	Store at -20°C.
Stability:	1 year
Predicted Protein Size:	23 kDa
Gene Name:	C-type lectin domain family 3 member B
Database Link:	Entrez Gene 7123 Human P05452
Background:	Tetranectin binds to plasminogen and to isolated kringle 4. May be involved in the packaging of molecules destined for exocytosis.
Synonyms:	DKFZp686H17246; TN; TNA

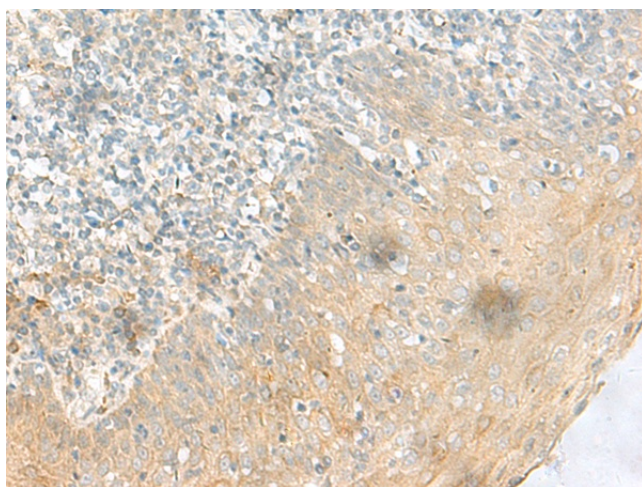


[View online »](#)

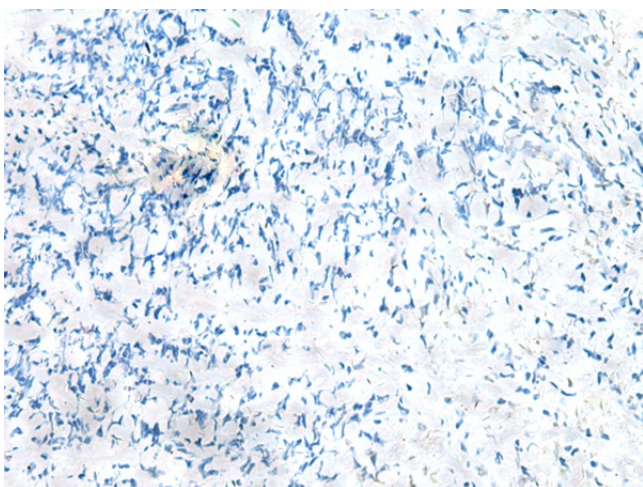
Product images:



Gel: 12%SDS-PAGE
Lysate: 40 μ g
Lane: Mouse spleen tissue lysate
Primary antibody: TA365971 (CLEC3B Antibody)
at dilution 1/350
Secondary antibody: Goat anti rabbit IgG at
1/8000 dilution
Exposure time: 2 minutes



Immunohistochemistry of paraffin-embedded
Human tonsil tissue using TA365971 (CLEC3B
Antibody) at dilution 1/50 (Original magnification:
 \times 200)



Immunohistochemistry of paraffin-embedded Human tonsil tissue using TA365971 (CLEC3B Antibody) at dilution 1/50, treated with fusion protein. (Original magnification: $\times 200$)