

Product datasheet for **TA365959**

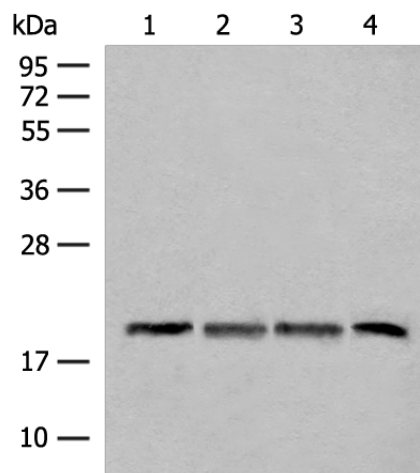
SEC11A Rabbit Polyclonal Antibody

Product data:

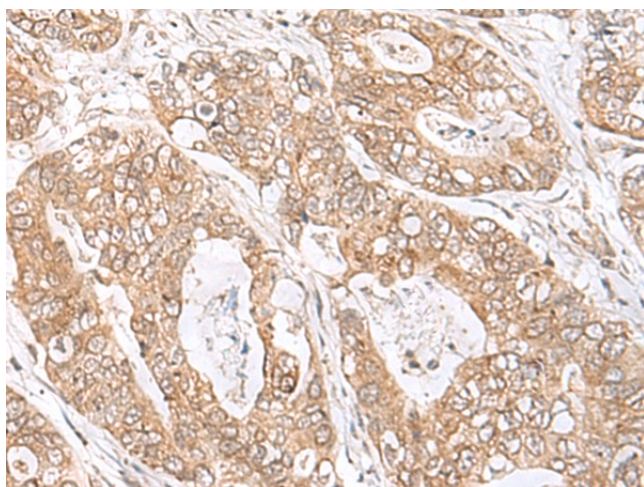
Product Type:	Primary Antibodies
Applications:	IHC, WB
Recommended Dilution:	WB: 500-2000 WB positive control: TM4, HEPG2 and A549 cell, Mouse liver tissue lysates IHC: 40-200 Positive control: Human gastric cancer Predicted cell location: Cell membrane
Reactivity:	Human, Mouse, Rat
Host:	Rabbit
Isotype:	IgG
Clonality:	Polyclonal
Immunogen:	Fusion protein of human SEC11A
Formulation:	pH7.4 PBS, 0.05% NaN ₃ , 40% Glycerol
Concentration:	lot specific
Purification:	Antigen affinity purification
Conjugation:	Unconjugated
Storage:	Store at -20°C.
Stability:	1 year
Predicted Protein Size:	21 kDa
Gene Name:	SEC11 homolog A, signal peptidase complex subunit
Database Link:	Entrez Gene 23478 Human P67812
Background:	This gene encodes a member of the peptidase S26B family. The encoded protein is an 18kDa subunit of the signal peptidase complex and has been linked to cell migration and invasion, gastric cancer and lymph node metastasis. Alternative splicing results in multiple transcript variants. A related pseudogene has been identified on chromosome 8.
Synonyms:	1810012E07Rik; SEC11L1; sid2895; SPC18; SPCS4A



[View online »](#)

Product images:

Gel: 12%SDS-PAGE
Lysate: 40 μ g
Lane 1-4: TM4
HEPG2 and A549 cell
Mouse liver tissue lysates
Primary antibody: TA365959 (SEC11A Antibody)
at dilution 1/300
Secondary antibody: Goat anti rabbit IgG at
1/8000 dilution
Exposure time: 3 seconds



Immunohistochemistry of paraffin-embedded
Human gastric cancer tissue using TA365959
(SEC11A Antibody) at dilution 1/45. (Original
magnification: \times 200)