

Product datasheet for **TA365958S**

MED28 Rabbit Polyclonal Antibody

Product data:

Product Type:	Primary Antibodies
Applications:	IHC, WB
Recommended Dilution:	WB: 500-2000 WB positive control: PC-3 cell lysate IHC: 200-400 Positive control: Human thyroid cancer Predicted cell location: Nucleus
Reactivity:	Human, Mouse, Rat
Host:	Rabbit
Isotype:	IgG
Clonality:	Polyclonal
Immunogen:	Fusion protein of human MED28
Formulation:	pH7.4 PBS, 0.05% NaN ₃ , 40% Glycerol
Purification:	Antigen affinity purification
Conjugation:	Unconjugated
Storage:	Store at -20°C.
Stability:	1 year
Predicted Protein Size:	19 kDa
Gene Name:	mediator complex subunit 28
Database Link:	Entrez Gene 80306 Human Q9H204



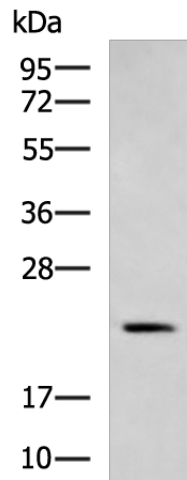
[View online »](#)

Background:

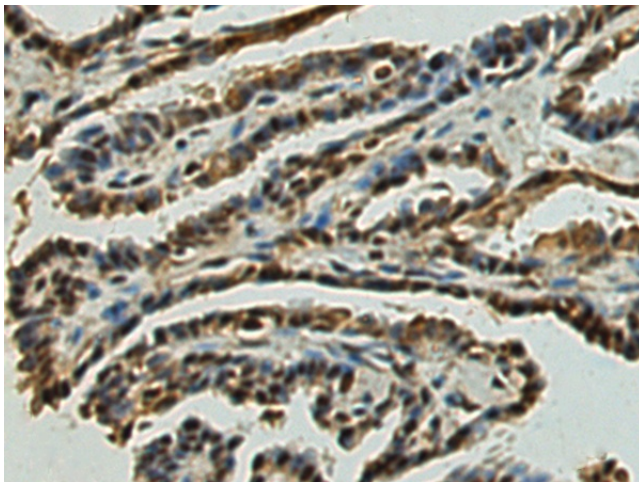
Component of the Mediator complex, a coactivator involved in the regulated transcription of nearly all RNA polymerase II-dependent genes. Mediator functions as a bridge to convey information from gene-specific regulatory proteins to the basal RNA polymerase II transcription machinery. Mediator is recruited to promoters by direct interactions with regulatory proteins and serves as a scaffold for the assembly of a functional preinitiation complex with RNA polymerase II and the general transcription factors. May be part of a complex containing NF2/merlin that participates in cellular signaling to the actin cytoskeleton downstream of tyrosine kinase signaling pathways.

Synonyms:

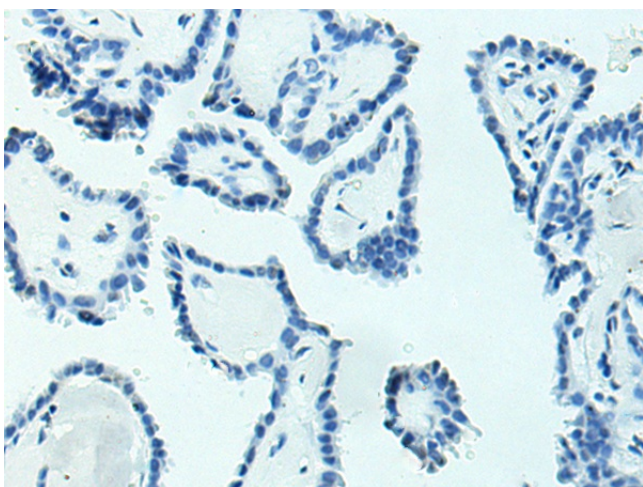
1500003D12Rik; DKFZp434N185; EG1; magicin

Product images:

Gel: 8%SDS-PAGE
Lysate: 40 µg
Lane: PC-3 cell lysate
Primary antibody: [TA365958] (MED28 Antibody) at dilution 1/1000
Secondary antibody: Goat anti rabbit IgG at 1/5000 dilution
Exposure time: 10 seconds



Immunohistochemistry of paraffin-embedded Human thyroid cancer tissue using [TA365958] (MED28 Antibody) at dilution 1/240 (Original magnification: ×200)



Immunohistochemistry of paraffin-embedded Human thyroid cancer tissue using [TA365958] (MED28 Antibody) at dilution 1/240, treated with fusion protein. (Original magnification: ×200)