

## Product datasheet for **TA365958**

### MED28 Rabbit Polyclonal Antibody

#### Product data:

Product Type:	Primary Antibodies
Applications:	IHC, WB
Recommended Dilution:	WB: 500-2000 WB positive control: PC-3 cell lysate IHC: 200-400 Positive control: Human thyroid cancer Predicted cell location: Nucleus
Reactivity:	Human, Mouse, Rat
Host:	Rabbit
Isotype:	IgG
Clonality:	Polyclonal
Immunogen:	Fusion protein of human MED28
Formulation:	pH7.4 PBS, 0.05% NaN <sub>3</sub> , 40% Glycerol
Concentration:	lot specific
Purification:	Antigen affinity purification
Conjugation:	Unconjugated
Storage:	Store at -20°C.
Stability:	1 year
Predicted Protein Size:	19 kDa
Gene Name:	mediator complex subunit 28
Database Link:	<a href="#">Entrez Gene 80306 Human Q9H204</a>



[View online »](#)

**Background:**

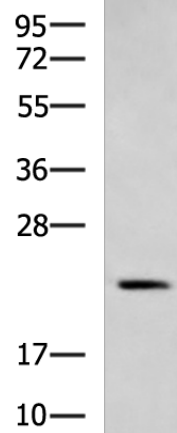
Component of the Mediator complex, a coactivator involved in the regulated transcription of nearly all RNA polymerase II-dependent genes. Mediator functions as a bridge to convey information from gene-specific regulatory proteins to the basal RNA polymerase II transcription machinery. Mediator is recruited to promoters by direct interactions with regulatory proteins and serves as a scaffold for the assembly of a functional preinitiation complex with RNA polymerase II and the general transcription factors. May be part of a complex containing NF2/merlin that participates in cellular signaling to the actin cytoskeleton downstream of tyrosine kinase signaling pathways.

**Synonyms:**

1500003D12Rik; DKFZp434N185; EG1; magicin

**Product images:**

kDa



Gel: 8%SDS-PAGE

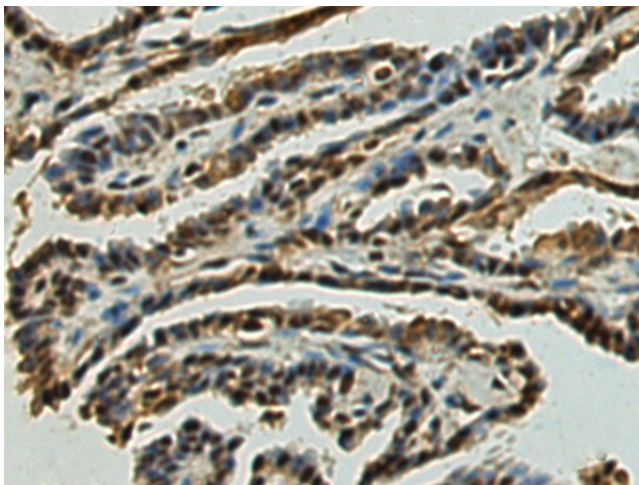
Lysate: 40 µg

Lane: PC-3 cell lysate

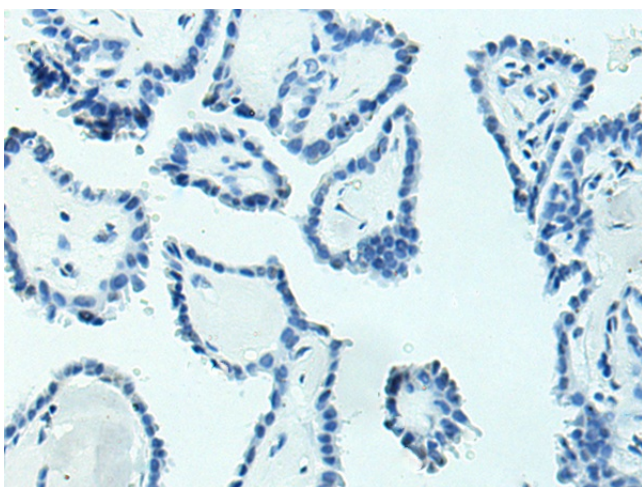
Primary antibody: TA365958 (MED28 Antibody) at dilution 1/1000

Secondary antibody: Goat anti rabbit IgG at 1/5000 dilution

Exposure time: 10 seconds



Immunohistochemistry of paraffin-embedded Human thyroid cancer tissue using TA365958 (MED28 Antibody) at dilution 1/240 (Original magnification: ×200)



Immunohistochemistry of paraffin-embedded Human thyroid cancer tissue using TA365958 (MED28 Antibody) at dilution 1/240, treated with fusion protein. (Original magnification: ×200)