

Product datasheet for **TA365952S**

C8orf44 Rabbit Polyclonal Antibody

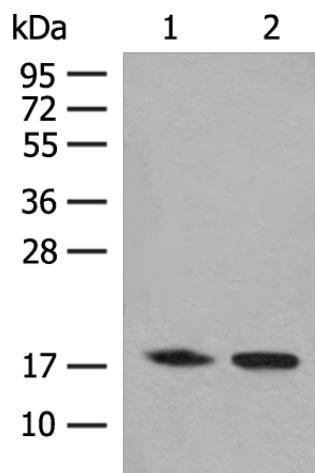
Product data:

| | |
|-------------------------|--|
| Product Type: | Primary Antibodies |
| Applications: | IHC, WB |
| Recommended Dilution: | WB: 200-1000 WB positive control: K562 cell, Human kidney tissue lysates IHC: 40-200 Positive control: Human thyroid cancer Predicted cell location: Cytoplasm |
| Reactivity: | Human |
| Host: | Rabbit |
| Isotype: | IgG |
| Clonality: | Polyclonal |
| Immunogen: | Fusion protein of human C8orf44 |
| Formulation: | pH7.4 PBS, 0.05% NaN ₃ , 40% Glycerol |
| Purification: | Antigen affinity purification |
| Conjugation: | Unconjugated |
| Storage: | Store at -20°C. |
| Stability: | 1 year |
| Predicted Protein Size: | 18 kDa |
| Gene Name: | chromosome 8 open reading frame 44 |
| Database Link: | Entrez Gene 56260 Human Q96CB5 |
| Background: | The function of this protein remains unknown. |
| Synonyms: | FLJ11267 |

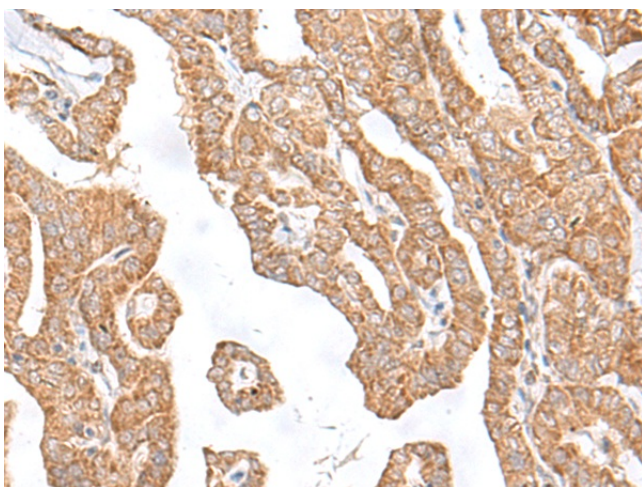


[View online »](#)

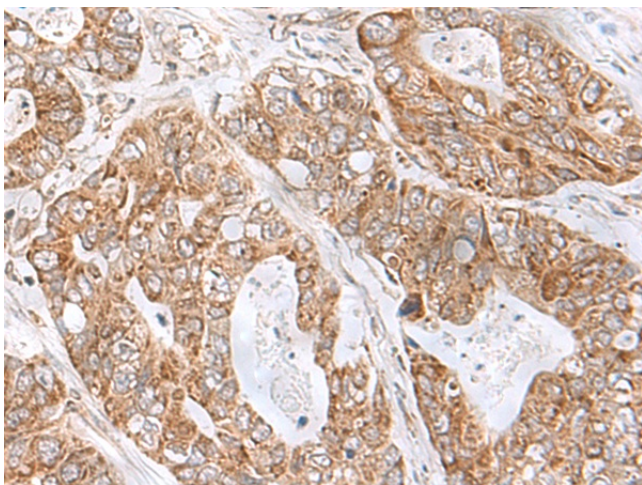
Product images:



Gel: 12%SDS-PAGE
Lysate: 40 μ g
Lane 1-2: K562 cell
Human kidney tissue lysates
Primary antibody: [TA365952] (C8orf44 Antibody)
at dilution 1/250
Secondary antibody: Goat anti rabbit IgG at
1/8000 dilution
Exposure time: 1 minute



Immunohistochemistry of paraffin-embedded
Human thyroid cancer tissue using [TA365952]
(C8orf44 Antibody) at dilution 1/35. (Original
magnification: \times 200)



Immunohistochemistry of paraffin-embedded Human gastric cancer tissue using [TA365952] (C8orf44 Antibody) at dilution 1/35. (Original magnification: ×200)