

Product datasheet for **TA365951S**

Ribosomal protein S11 (RPS11) Rabbit Polyclonal Antibody

Product data:

Product Type:	Primary Antibodies
Applications:	IHC, WB
Recommended Dilution:	WB: 500-2000 WB positive control: Jurkat, NIH/3T3, Raji, 231 and A172 cell lysates IHC: 50-200 Positive control: Human tonsil Predicted cell location: Cytoplasm
Reactivity:	Human, Mouse, Rat
Host:	Rabbit
Isotype:	IgG
Clonality:	Polyclonal
Immunogen:	Fusion protein of human RPS11
Formulation:	pH7.4 PBS, 0.05% NaN ₃ , 40% Glycerol
Purification:	Antigen affinity purification
Conjugation:	Unconjugated
Storage:	Store at -20°C.
Stability:	1 year
Predicted Protein Size:	18 kDa
Gene Name:	ribosomal protein S11
Database Link:	Entrez Gene 6205 Human P62280

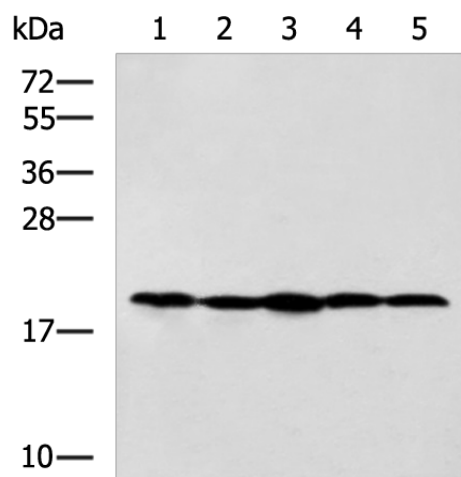
Background: Ribosomes, the organelles that catalyze protein synthesis, consist of a small 40S subunit and a large 60S subunit. Together these subunits are composed of 4 RNA species and approximately 80 structurally distinct proteins. This gene encodes a member of the S17P family of ribosomal proteins that is a component of the 40S subunit. This gene is co-transcribed with the small nucleolar RNA gene U35B, which is located in the third intron. As is typical for genes encoding ribosomal proteins, there are multiple processed pseudogenes of this gene dispersed throughout the genome.



[View online »](#)

Synonyms: RPS11

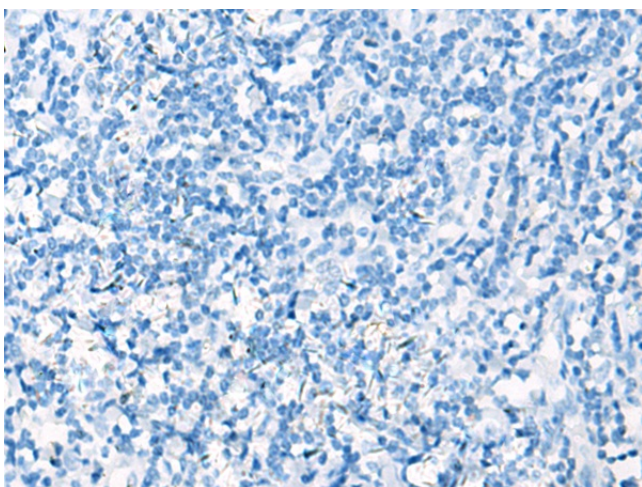
Product images:



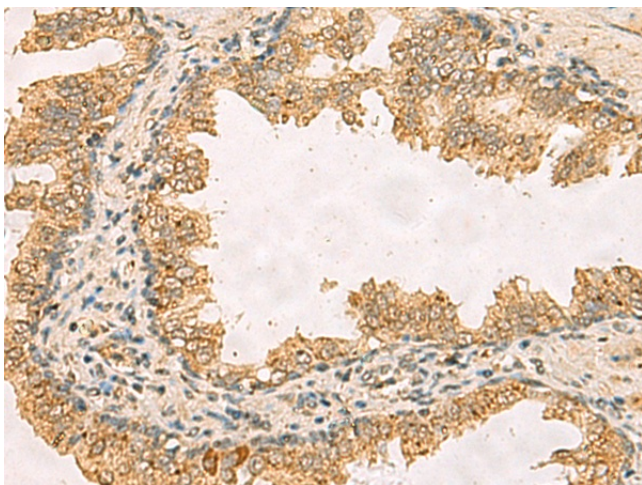
Gel: 12%SDS-PAGE
 Lysate: 40 µg
 Lane 1-5: Jurkat
 NIH/3T3
 Raji
 231 and A172 cell lysates
 Primary antibody: [TA365951] (RPS11 Antibody)
 at dilution 1/700
 Secondary antibody: Goat anti rabbit IgG at
 1/5000 dilution
 Exposure time: 30 seconds



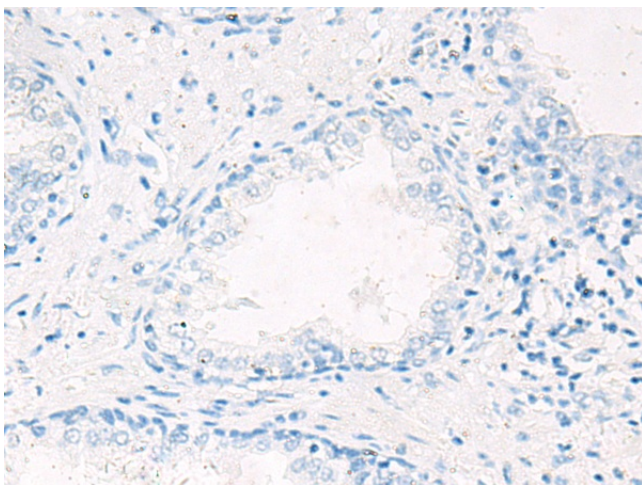
Immunohistochemistry of paraffin-embedded
 Human tonsil tissue using [TA365951] (RPS11
 Antibody) at dilution 1/40 (Original magnification:
 ×200)



Immunohistochemistry of paraffin-embedded Human tonsil tissue using [TA365951] (RPS11 Antibody) at dilution 1/40, treated with fusion protein. (Original magnification: $\times 200$)



Immunohistochemistry of paraffin-embedded Human prostate cancer tissue using [TA365951] (RPS11 Antibody) at dilution 1/40 (Original magnification: $\times 200$)



Immunohistochemistry of paraffin-embedded Human prostate cancer tissue using [TA365951] (RPS11 Antibody) at dilution 1/40, treated with fusion protein. (Original magnification: $\times 200$)