

## Product datasheet for **TA365947S**

### Rad6 (UBE2A) Rabbit Polyclonal Antibody

#### Product data:

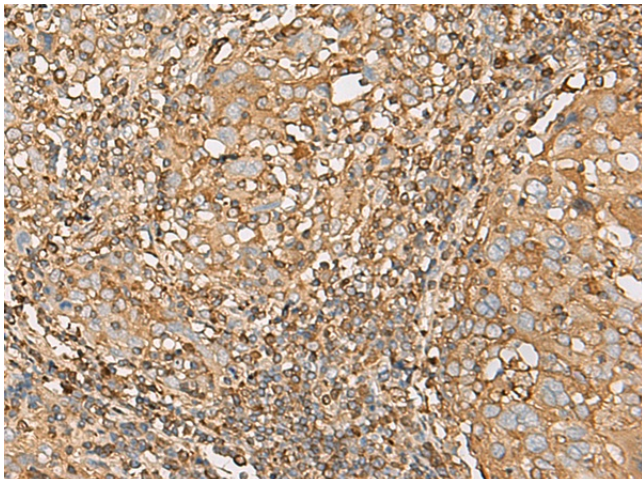
Product Type:	Primary Antibodies
Applications:	IHC
Recommended Dilution:	IHC: 50-300 Positive control: Human cervical cancer Predicted cell location: Cell membrane
Reactivity:	Human, Mouse
Host:	Rabbit
Isotype:	IgG
Clonality:	Polyclonal
Immunogen:	Fusion protein of human UBE2A
Formulation:	pH7.4 PBS, 0.05% NaN <sub>3</sub> , 40% Glycerol
Purification:	Antigen affinity purification
Conjugation:	Unconjugated
Storage:	Store at -20°C.
Stability:	1 year
Gene Name:	ubiquitin conjugating enzyme E2 A
Database Link:	<a href="#">Entrez Gene 7319 Human P49459</a>

**Background:** The modification of proteins with ubiquitin is an important cellular mechanism for targeting abnormal or short-lived proteins for degradation. Ubiquitination involves at least three classes of enzymes: ubiquitin-activating enzymes, ubiquitin-conjugating enzymes, and ubiquitin-protein ligases. This gene encodes a member of the E2 ubiquitin-conjugating enzyme family. This enzyme is required for post-replicative DNA damage repair, and may play a role in transcriptional regulation. Mutations in this gene are associated with mental retardation. Alternative splicing results in multiple transcript variants.

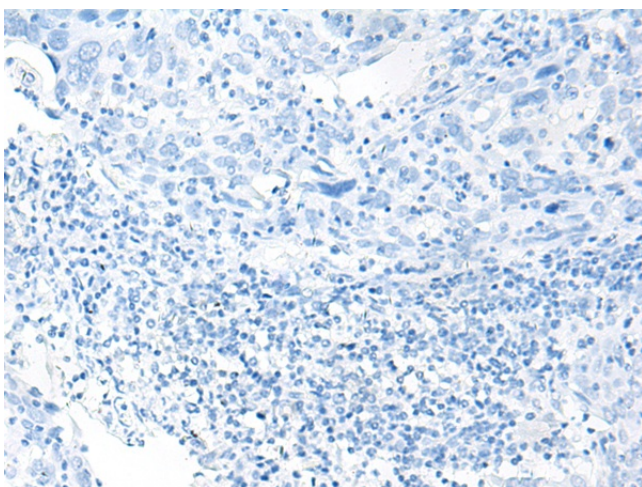
**Synonyms:** HHR6A; HR6A; RAD6A; UBC2



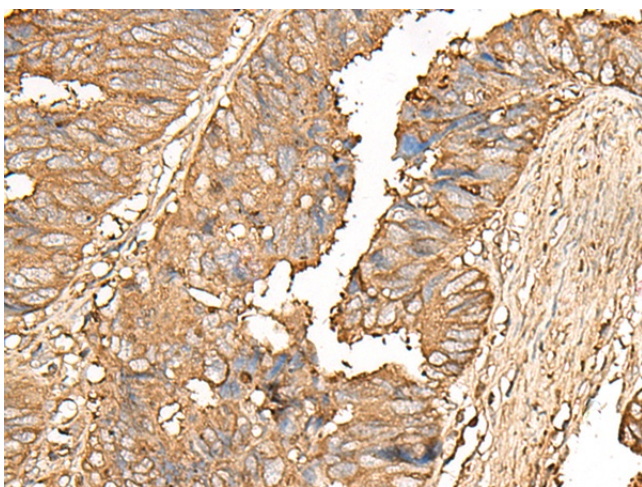
[View online »](#)

**Product images:**

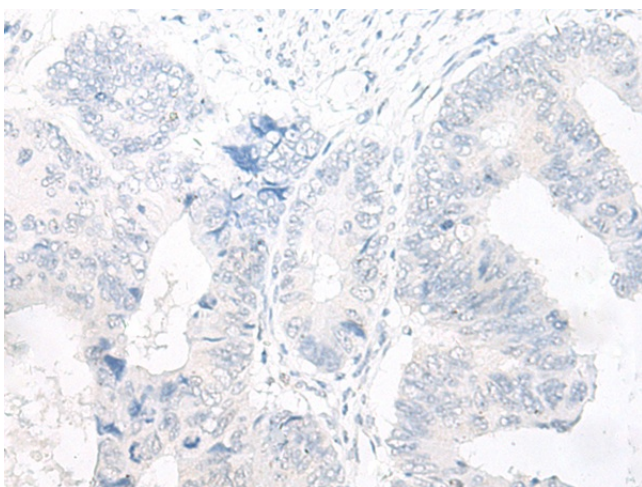
Immunohistochemistry of paraffin-embedded Human cervical cancer tissue using [TA365947] (UBE2A Antibody) at dilution 1/55 (Original magnification:  $\times 200$ )



Immunohistochemistry of paraffin-embedded Human cervical cancer tissue using [TA365947] (UBE2A Antibody) at dilution 1/55, treated with fusion protein. (Original magnification:  $\times 200$ )



Immunohistochemistry of paraffin-embedded Human colorectal cancer tissue using [TA365947] (UBE2A Antibody) at dilution 1/55 (Original magnification:  $\times 200$ )



Immunohistochemistry of paraffin-embedded Human colorectal cancer tissue using [TA365947] (UBE2A Antibody) at dilution 1/55, treated with fusion protein. (Original magnification:  $\times 200$ )