

## Product datasheet for **TA365945S**

### Mago nashi homolog 2 (MAGOHB) Rabbit Polyclonal Antibody

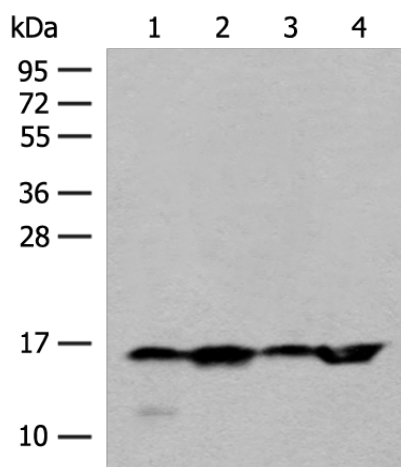
#### Product data:

Product Type:	Primary Antibodies
Applications:	IHC, WB
Recommended Dilution:	WB: 500-2000 WB positive control: HL-60, 293T, Hela and Jurkat cell lysates IHC: 50-300 Positive control: Human esophagus cancer Predicted cell location: Nucleus and Cytoplasm
Reactivity:	Human, Mouse
Host:	Rabbit
Isotype:	IgG
Clonality:	Polyclonal
Immunogen:	Fusion protein of human MAGOHB
Formulation:	pH7.4 PBS, 0.05% NaN <sub>3</sub> , 40% Glycerol
Purification:	Antigen affinity purification
Conjugation:	Unconjugated
Storage:	Store at -20°C.
Stability:	1 year
Predicted Protein Size:	17 kDa
Gene Name:	mago homolog B, exon junction complex core component
Database Link:	<a href="#">Entrez Gene 55110 Human Q96A72</a>
Background:	Involved in mRNA splicing and in the nonsense-mediated decay (NMD) pathway.
Synonyms:	FLJ10292; mago; magoh; MAGOH2; MGN2

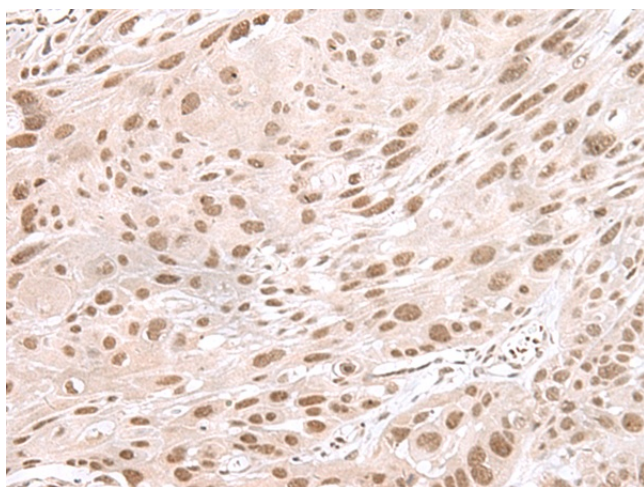


[View online »](#)

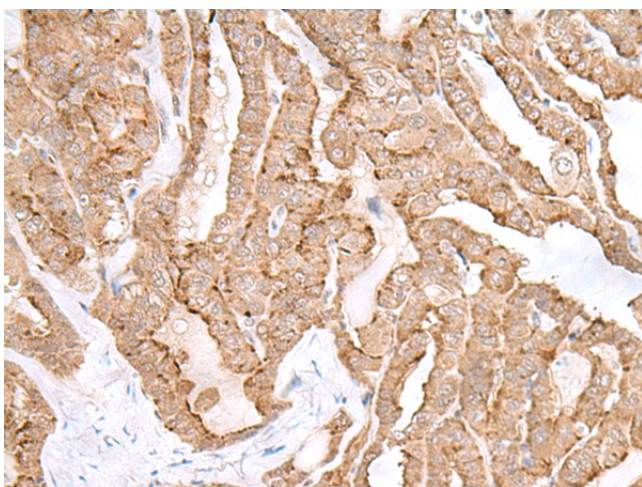
**Product images:**



Gel: 12%SDS-PAGE  
 Lysate: 40 µg  
 Lane 1-4: HL-60  
 293T  
 HeLa and Jurkat cell lysates  
 Primary antibody: [TA365945] (MAGOHB Antibody) at dilution 1/400  
 Secondary antibody: Goat anti rabbit IgG at 1/8000 dilution  
 Exposure time: 15 seconds



Immunohistochemistry of paraffin-embedded Human esophagus cancer tissue using [TA365945] (MAGOHB Antibody) at dilution 1/60. (Original magnification: ×200)



Immunohistochemistry of paraffin-embedded Human thyroid cancer tissue using [TA365945] (MAGOHB Antibody) at dilution 1/60. (Original magnification: x200)