

## Product datasheet for TA365940S

### RPL28 Rabbit Polyclonal Antibody

#### Product data:

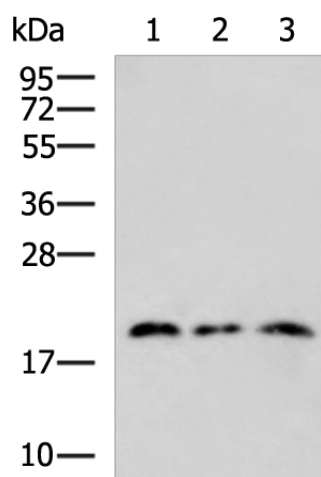
Product Type:	Primary Antibodies
Applications:	WB
Recommended Dilution:	WB: 500-2000 WB positive control: 231, HepG2 cell, Mouse liver tissue lysates
Reactivity:	Human, Mouse, Rat
Host:	Rabbit
Isotype:	IgG
Clonality:	Polyclonal
Immunogen:	Fusion protein of human RPL28
Formulation:	pH7.4 PBS, 0.05% NaN <sub>3</sub> , 40% Glycerol
Purification:	Antigen affinity purification
Conjugation:	Unconjugated
Storage:	Store at -20°C.
Stability:	1 year
Predicted Protein Size:	16 kDa
Gene Name:	ribosomal protein L28
Database Link:	<a href="#">Entrez Gene 6158 Human P46779</a>
Background:	Ribosomes, the organelles that catalyze protein synthesis, consist of a small 40S subunit and a large 60S subunit. Together these subunits are composed of 4 RNA species and approximately 80 structurally distinct proteins. This gene encodes a ribosomal protein that is a component of the 60S subunit. The protein belongs to the L28E family of ribosomal proteins. It is located in the cytoplasm. Variable expression of this gene in colorectal cancers compared to adjacent normal tissues has been observed, although no correlation between the level of expression and the severity of the disease has been found. As is typical for genes encoding ribosomal proteins, there are multiple processed pseudogenes of this gene dispersed through the genome. Alternative splicing results in multiple transcript variants encoding distinct isoforms.



[View online »](#)

Synonyms: FLJ43307

### Product images:



Gel: 12%SDS-PAGE  
Lysate: 40  $\mu$ g  
Lane 1-3: 231  
HepG2 cell  
Mouse liver tissue lysates  
Primary antibody: [TA365940] (RPL28 Antibody)  
at dilution 1/400  
Secondary antibody: Goat anti rabbit IgG at  
1/5000 dilution  
Exposure time: 5 seconds