

## Product datasheet for **TA365938S**

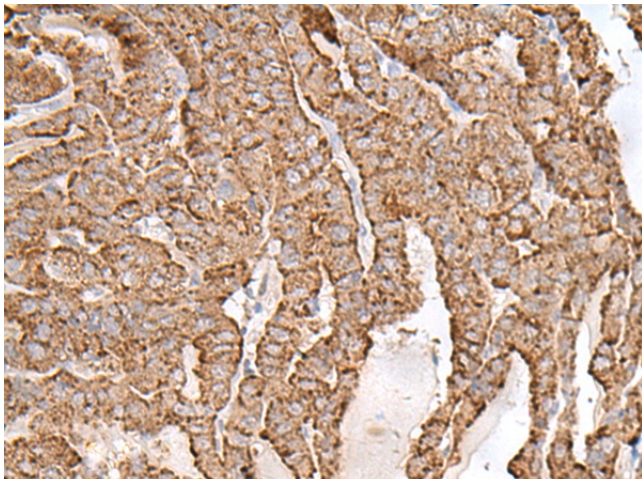
### AP1S1 Rabbit Polyclonal Antibody

#### Product data:

Product Type:	Primary Antibodies
Applications:	IHC
Recommended Dilution:	IHC: 50-300 Positive control: Human thyroid cancer Predicted cell location: Cytoplasm
Reactivity:	Human, Mouse
Host:	Rabbit
Isotype:	IgG
Clonality:	Polyclonal
Immunogen:	Fusion protein of human AP1S1
Formulation:	pH7.4 PBS, 0.05% NaN <sub>3</sub> , 40% Glycerol
Purification:	Antigen affinity purification
Conjugation:	Unconjugated
Storage:	Store at -20°C.
Stability:	1 year
Gene Name:	adaptor related protein complex 1 sigma 1 subunit
Database Link:	<a href="#">Entrez Gene 1174 Human P61966</a>
Background:	The protein encoded by this gene is part of the clathrin coat assembly complex which links clathrin to receptors in coated vesicles. These vesicles are involved in endocytosis and Golgi processing. This protein, as well as beta-prime-adaptin, gamma-adaptin, and the medium (mu) chain AP47, form the AP-1 assembly protein complex located at the Golgi vesicle.
Synonyms:	AP19; CLAPS1; FLJ92436; OTTHUMP00000211468; SIGMA1A; Sigma1A-adaptin; WUGSC:H_DJ0747G18.2



[View online »](#)

**Product images:**

Immunohistochemistry of paraffin-embedded Human thyroid cancer tissue using [TA365938] (AP1S1 Antibody) at dilution 1/65. (Original magnification:  $\times 200$ )