

Product datasheet for **TA365936S**

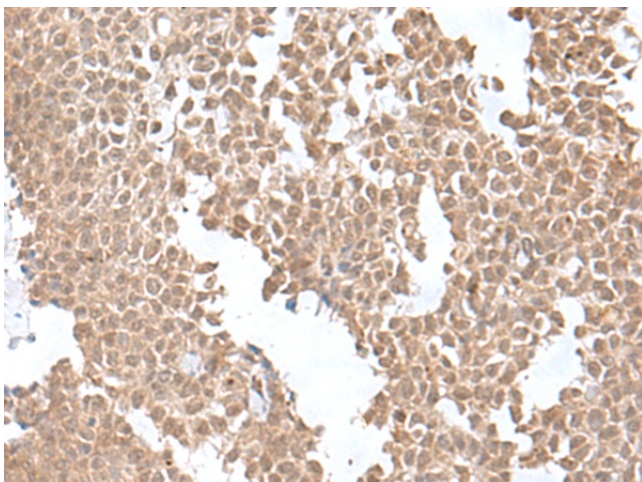
SNRNP25 Rabbit Polyclonal Antibody

Product data:

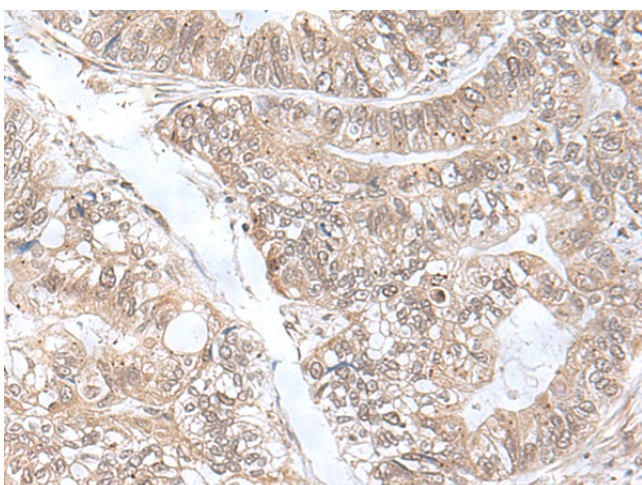
| | |
|-----------------------|--|
| Product Type: | Primary Antibodies |
| Applications: | IHC |
| Recommended Dilution: | IHC: 50-300 Positive control: Human ovarian cancer Predicted cell location: Cytoplasm and Nucleus |
| Reactivity: | Human, Mouse |
| Host: | Rabbit |
| Isotype: | IgG |
| Clonality: | Polyclonal |
| Immunogen: | Fusion protein of human SNRNP25 |
| Formulation: | pH7.4 PBS, 0.05% NaN ₃ , 40% Glycerol |
| Purification: | Antigen affinity purification |
| Conjugation: | Unconjugated |
| Storage: | Store at -20°C. |
| Stability: | 1 year |
| Gene Name: | small nuclear ribonucleoprotein U11/U12 subunit 25 |
| Database Link: | Entrez Gene 79622 Human Q9BV90 |
| Background: | Two types of spliceosomes catalyze splicing of pre-mRNAs. The major U2-type spliceosome is found in all eukaryotes and removes U2-type introns, which represent more than 99% of pre-mRNA introns. The minor U12-type spliceosome is found in some eukaryotes and removes U12-type introns, which are rare and have distinct splice consensus signals. The U12-type spliceosome consists of several small nuclear RNAs and associated proteins. This gene encodes a 25K protein that is a component of the U12-type spliceosome. |
| Synonyms: | C16orf33; FLJ22940; U11/U12-25K |



[View online »](#)

Product images:

Immunohistochemistry of paraffin-embedded Human ovarian cancer tissue using [TA365936] (SNRNP25 Antibody) at dilution 1/55. (Original magnification: $\times 200$)



Immunohistochemistry of paraffin-embedded Human gastric cancer tissue using [TA365936] (SNRNP25 Antibody) at dilution 1/55. (Original magnification: $\times 200$)