

## Product datasheet for **TA365935**

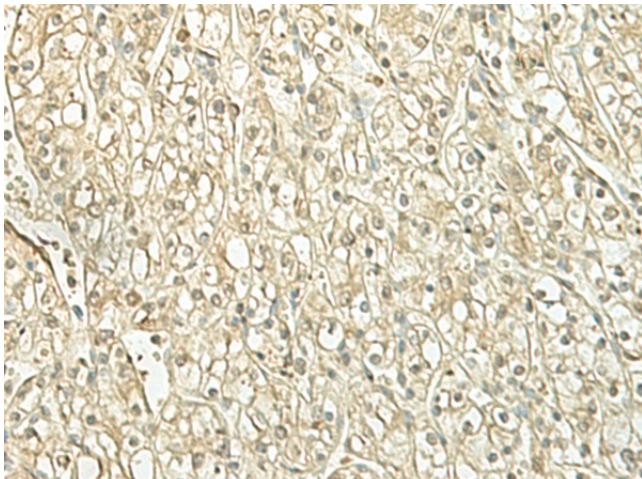
### **SPIRE1 Rabbit Polyclonal Antibody**

#### **Product data:**

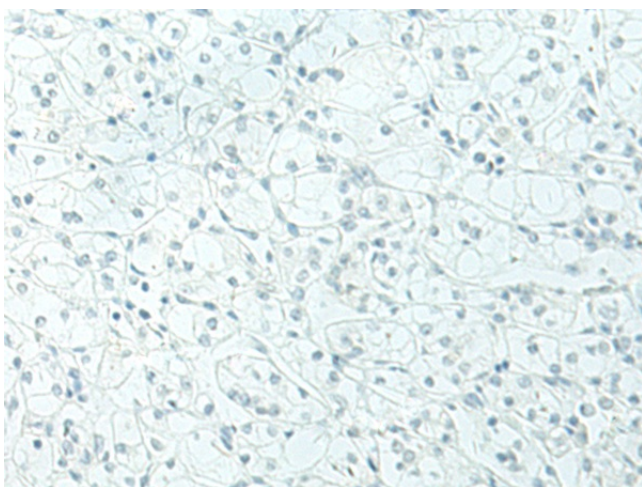
Product Type:	Primary Antibodies
Applications:	IHC
Recommended Dilution:	IHC: 50-300 Positive control: Human kidney cancer Predicted cell location: Nucleus or Cytoplasm
Reactivity:	Human, Mouse
Host:	Rabbit
Isotype:	IgG
Clonality:	Polyclonal
Immunogen:	Fusion protein of human SPIRE1
Formulation:	pH7.4 PBS, 0.05% NaN <sub>3</sub> , 40% Glycerol
Concentration:	lot specific
Purification:	Antigen affinity purification
Conjugation:	Unconjugated
Storage:	Store at -20°C.
Stability:	1 year
Gene Name:	spire type actin nucleation factor 1
Database Link:	<a href="#">Entrez Gene 56907 Human Q08AE8</a>
Background:	Spire proteins, such as SPIRE1, are highly conserved between species. They belong to the family of Wiskott-Aldrich homology region-2 (WH2) proteins, which are involved in actin organization (Kerkhoff et al., 2001 [PubMed 11747823]).
Synonyms:	KIAA1135; MGC150621; MGC150622; Spir-1; SPIR1



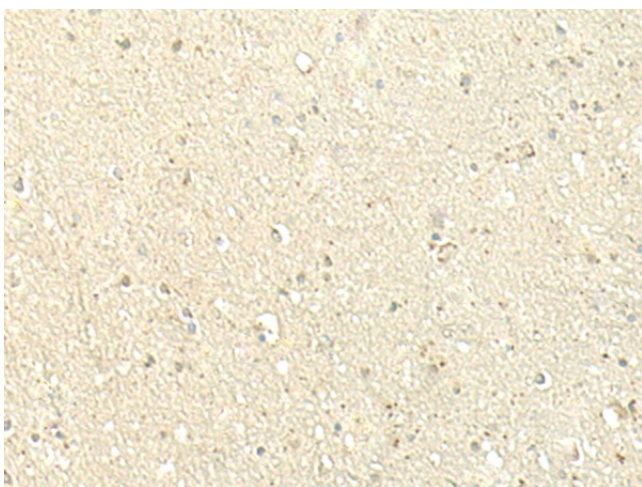
[View online »](#)

**Product images:**

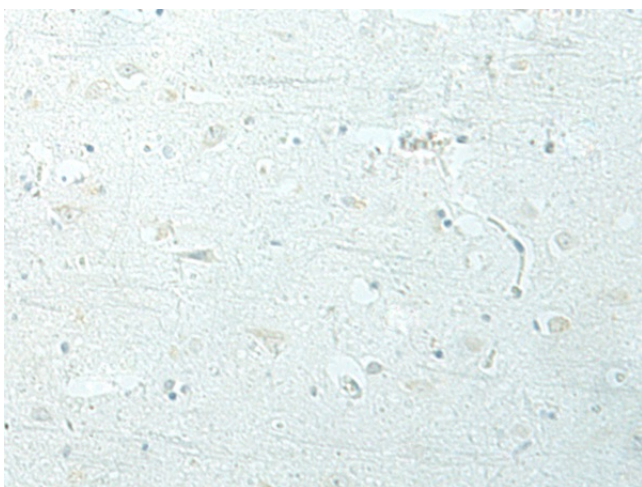
Immunohistochemistry of paraffin-embedded Human kidney cancer tissue using TA365935 (SPIRE1 Antibody) at dilution 1/60 (Original magnification:  $\times 200$ )



Immunohistochemistry of paraffin-embedded Human kidney cancer tissue using TA365935 (SPIRE1 Antibody) at dilution 1/60, treated with fusion protein. (Original magnification:  $\times 200$ )



Immunohistochemistry of paraffin-embedded Human brain tissue using TA365935 (SPIRE1 Antibody) at dilution 1/60 (Original magnification: ×200)



Immunohistochemistry of paraffin-embedded Human brain tissue using TA365935 (SPIRE1 Antibody) at dilution 1/60, treated with fusion protein. (Original magnification: ×200)