

## Product datasheet for **TA365926S**

### MRPS36 Rabbit Polyclonal Antibody

#### Product data:

Product Type:	Primary Antibodies
Applications:	IHC, WB
Recommended Dilution:	WB: 500-2000 WB positive control: Mouse heart tissue lysate IHC: 100-300 Positive control: Human prostate cancer Predicted cell location: Cytoplasm
Reactivity:	Human, Mouse
Host:	Rabbit
Isotype:	IgG
Clonality:	Polyclonal
Immunogen:	Fusion protein of human MRPS36
Formulation:	pH7.4 PBS, 0.05% NaN <sub>3</sub> , 40% Glycerol
Purification:	Antigen affinity purification
Conjugation:	Unconjugated
Storage:	Store at -20°C.
Stability:	1 year
Predicted Protein Size:	11 kDa
Gene Name:	mitochondrial ribosomal protein S36
Database Link:	<a href="#">Entrez Gene 92259 Human P82909</a>



[View online »](#)

**Background:**

Mammalian mitochondrial ribosomal proteins are encoded by nuclear genes and help in protein synthesis within the mitochondrion. The mitochondrial ribosome (mitoribosome) consists of a small 28S subunit and a large 39S subunit. They have an estimated 75% protein to rRNA composition compared to prokaryotic ribosomes, where this ratio is reversed. Another difference between mammalian mitoribosomes and prokaryotic ribosomes is that the latter contain a 5S rRNA. Among different species, the proteins comprising the mitoribosome differ greatly in sequence, and sometimes in biochemical properties, which prevents easy recognition by sequence homology. This gene encodes a 28S subunit protein. Pseudogenes corresponding to this gene are found on chromosomes 3p, 4q, 8p, 11q, 12q, and 20p.

**Synonyms:**

DC47; MGC22896; MRP-S36; S36mt

**Product images:**

kDa

95 —  
72 —  
55 —  
36 —  
28 —  
17 —  
10 —



Gel: 10%SDS-PAGE

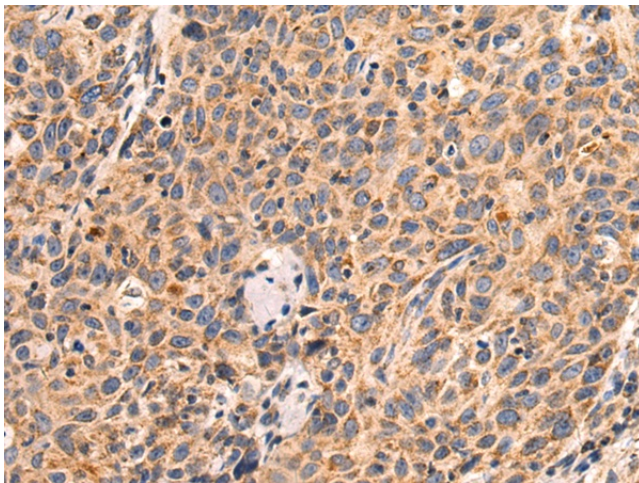
Lysate: 40 µg

Lane: Mouse heart tissue lysate

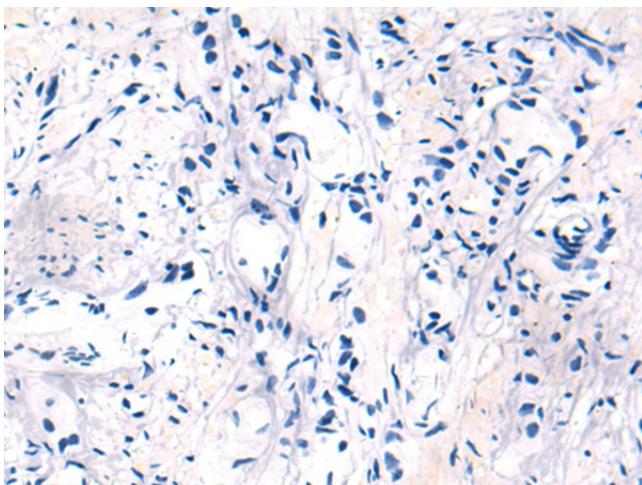
Primary antibody: [TA365926] (MRPS36 Antibody)  
at dilution 1/300

Secondary antibody: Goat anti rabbit IgG at  
1/5000 dilution

Exposure time: 20 seconds



Immunohistochemistry of paraffin-embedded  
Human prostate cancer tissue using [TA365926]  
(MRPS36 Antibody) at dilution 1/105 (Original  
magnification: ×200)



Immunohistochemistry of paraffin-embedded Human prostate cancer tissue using [TA365926] (MRPS36 Antibody) at dilution 1/105, treated with fusion protein. (Original magnification:  $\times 200$ )