

## Product datasheet for **TA365922S**

### **FXYD6 Rabbit Polyclonal Antibody**

#### **Product data:**

Product Type:	Primary Antibodies
Applications:	IHC, WB
Recommended Dilution:	WB: 500-2000 WB positive control: Human cerebrum tissue, Mouse brain tissue, Human cerebella tissue lysates IHC: 50-300 Positive control: Human liver cancer Predicted cell location: Cytoplasm
Reactivity:	Human, Mouse, Rat
Host:	Rabbit
Isotype:	IgG
Clonality:	Polyclonal
Immunogen:	Fusion protein of human FXYD6
Formulation:	pH7.4 PBS, 0.05% NaN <sub>3</sub> , 40% Glycerol
Purification:	Antigen affinity purification
Conjugation:	Unconjugated
Storage:	Store at -20°C.
Stability:	1 year
Predicted Protein Size:	11 kDa
Gene Name:	FXYD domain containing ion transport regulator 6
Database Link:	<a href="#">Entrez Gene 53826 Human Q9H0Q3</a>

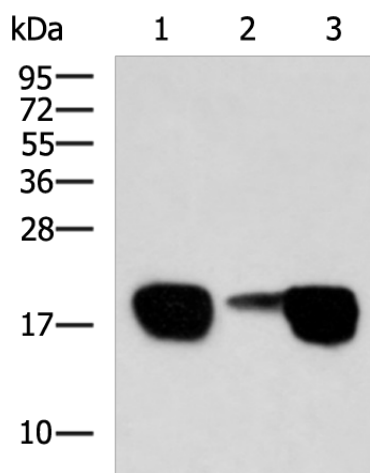
**Background:** This gene encodes a member of the FXYD family of transmembrane proteins. This particular protein encodes phosphohippolin, which likely affects the activity of Na,K-ATPase. Multiple alternatively spliced transcript variants encoding the same protein have been described. Related pseudogenes have been identified on chromosomes 10 and X. Read-through transcripts have been observed between this locus and the downstream sodium/potassium-transporting ATPase subunit gamma (FXYD2, GeneID 486) locus.



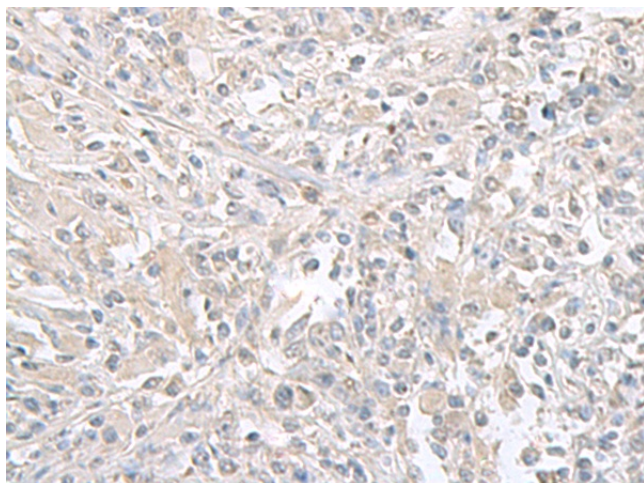
[View online »](#)

Synonyms: phosphohippolin

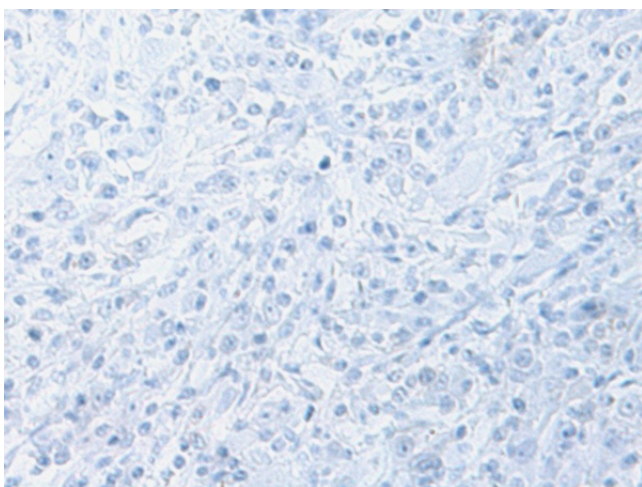
**Product images:**



Gel: 12%SDS-PAGE  
 Lysate: 40 µg  
 Lane 1-3: Human cerebrum tissue  
 Mouse brain tissue  
 Human cerebella tissue lysates  
 Primary antibody: [TA365922] (FXYD6 Antibody)  
 at dilution 1/500  
 Secondary antibody: Goat anti rabbit IgG at  
 1/5000 dilution  
 Exposure time: 10 seconds



Immunohistochemistry of paraffin-embedded  
 Human liver cancer tissue using [TA365922]  
 (FXYD6 Antibody) at dilution 1/65 (Original  
 magnification: ×200)



Immunohistochemistry of paraffin-embedded Human liver cancer tissue using [TA365922] (FXVD6 Antibody) at dilution 1/65, treated with fusion protein. (Original magnification:  $\times 200$ )