

Product datasheet for **TA365921**

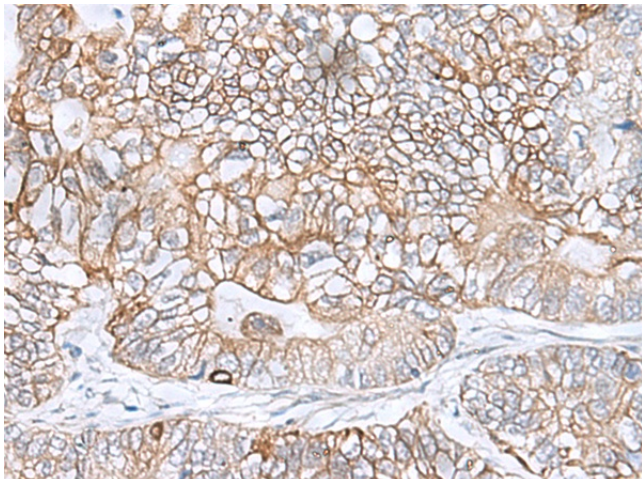
C9orf116 Rabbit Polyclonal Antibody

Product data:

Product Type:	Primary Antibodies
Applications:	IHC
Recommended Dilution:	IHC: 25-100 Positive control: Human gastric cancer Predicted cell location: Cytoplasm
Reactivity:	Human
Host:	Rabbit
Isotype:	IgG
Clonality:	Polyclonal
Immunogen:	Fusion protein of human C9orf116
Formulation:	pH7.4 PBS, 0.05% NaN ₃ , 40% Glycerol
Concentration:	lot specific
Purification:	Antigen affinity purification
Conjugation:	Unconjugated
Storage:	Store at -20°C.
Stability:	1 year
Gene Name:	chromosome 9 open reading frame 116
Database Link:	Entrez Gene 138162 Human Q5BN46
Background:	C9orf116, also known as PIERCE1. PIERCE1 is an important p53 target gene contributing to normal DNA damage response and may play crucial roles in maintaining genomic integrity against genotoxic stresses, including UVC irradiation. PIERCE1 exists as two alternatively spliced isoforms and is predominantly expressed in human small cell lung cancer. PIERCE1 knockdown induces down-regulation of proapoptotic genes including Ei24, Apaf1 and PTEN, suggesting that PIERCE1 is a proapoptotic gene. It is helpful for in-depth understanding of p53 pathways and the design of new cancer therapies.
Synonyms:	FLJ13945; MGC29761; OTTHUMP00000022533



[View online »](#)

Product images:

Immunohistochemistry of paraffin-embedded Human gastric cancer tissue using TA365921 (C9orf116 Antibody) at dilution 1/40. (Original magnification: $\times 200$)