

Product datasheet for **TA365919**

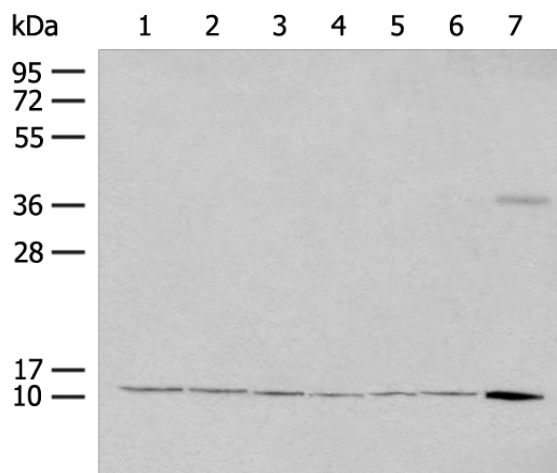
RPS27L Rabbit Polyclonal Antibody

Product data:

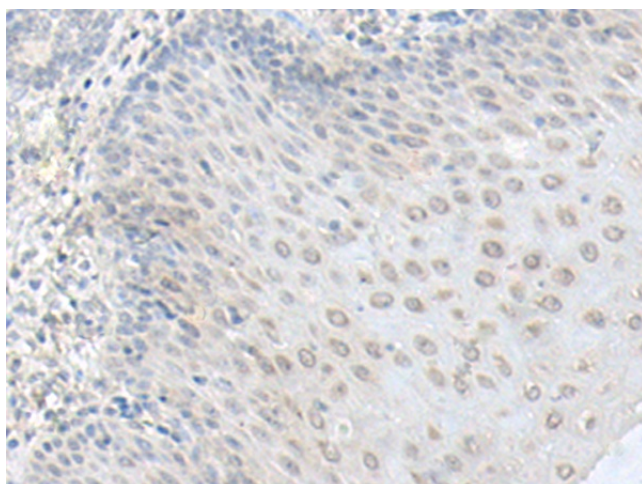
Product Type:	Primary Antibodies
Applications:	IHC, WB
Recommended Dilution:	WB: 200-1000 WB positive control: HT-29 cell, LOVO cell, 231 cell, Rat lung tissue, A172 cell, HUVEC cell and Mouse adrenal gland tissue lysates IHC: 40-200 Positive control: Human esophagus cancer Predicted cell location: Nucleus
Reactivity:	Human, Mouse, Rat
Host:	Rabbit
Isotype:	IgG
Clonality:	Polyclonal
Immunogen:	Fusion protein of human RPS27L
Formulation:	pH7.4 PBS, 0.05% NaN ₃ , 40% Glycerol
Concentration:	lot specific
Purification:	Antigen affinity purification
Conjugation:	Unconjugated
Storage:	Store at -20°C.
Stability:	1 year
Predicted Protein Size:	9 kDa
Gene Name:	ribosomal protein S27 like
Database Link:	Entrez Gene 51065 Human Q71UM5
Background:	This gene encodes a protein sharing 96% amino acid similarity with ribosomal protein S27, which suggests the encoded protein may be a component of the 40S ribosomal subunit.
Synonyms:	RPS27L



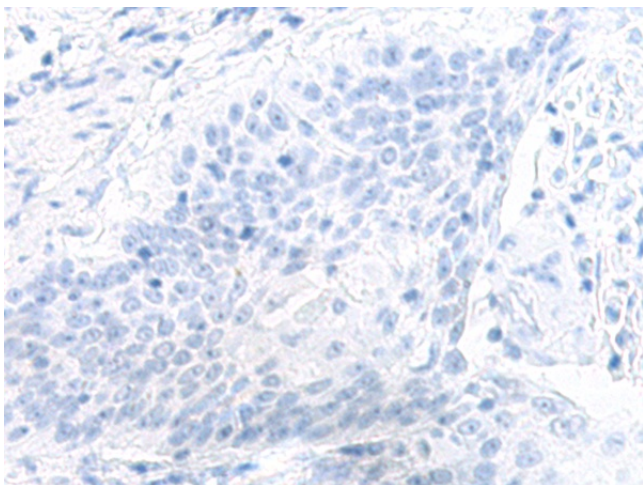
[View online »](#)

Product images:


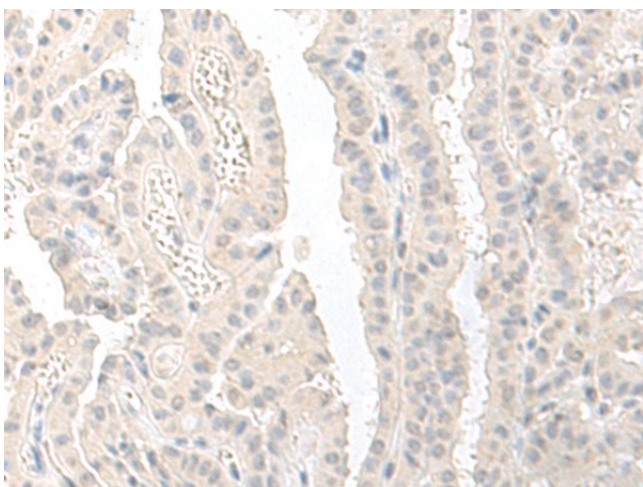
Gel: 12%SDS-PAGE
 Lysate: 40 μ g
 Lane 1-7: HT-29 cell
 LOVO cell
 231 cell
 Rat lung tissue
 A172 cell
 HUVEC cell and Mouse adrenal gland tissue
 lysates
 Primary antibody: TA365919 (RPS27L Antibody) at
 dilution 1/350
 Secondary antibody: Goat anti rabbit IgG at
 1/8000 dilution
 Exposure time: 10 seconds



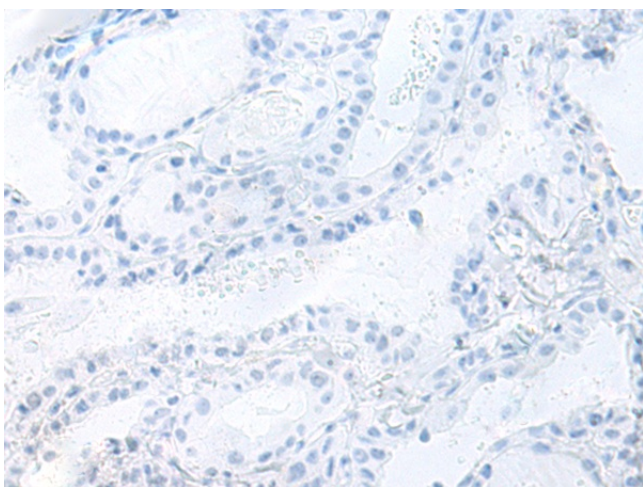
Immunohistochemistry of paraffin-embedded
 Human esophagus cancer tissue using TA365919
 (RPS27L Antibody) at dilution 1/50 (Original
 magnification: \times 200)



Immunohistochemistry of paraffin-embedded Human esophagus cancer tissue using TA365919 (RPS27L Antibody) at dilution 1/50, treated with fusion protein. (Original magnification: ×200)



Immunohistochemistry of paraffin-embedded Human thyroid cancer tissue using TA365919 (RPS27L Antibody) at dilution 1/50 (Original magnification: ×200)



Immunohistochemistry of paraffin-embedded Human thyroid cancer tissue using TA365919 (RPS27L Antibody) at dilution 1/50, treated with fusion protein. (Original magnification: ×200)