

## Product datasheet for **TA365917S**

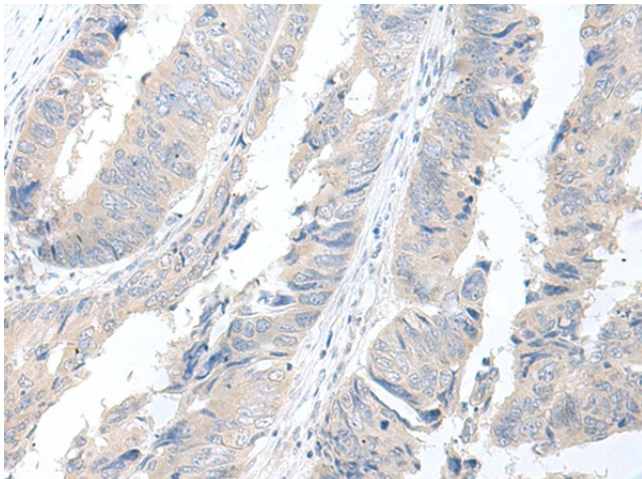
### GBA2 Rabbit Polyclonal Antibody

#### Product data:

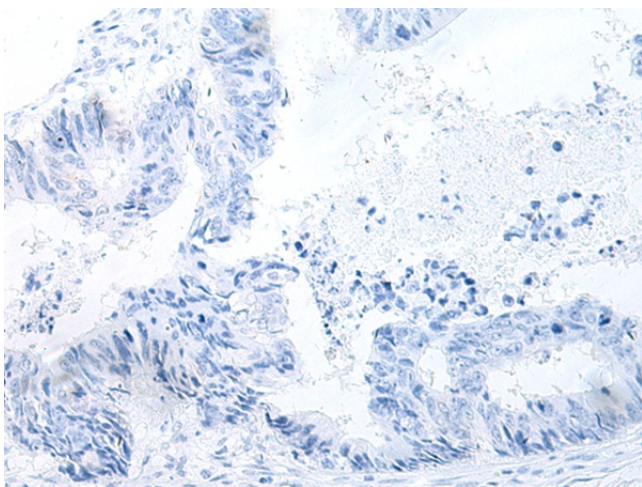
Product Type:	Primary Antibodies
Applications:	IHC
Recommended Dilution:	IHC: 50-300 Positive control: Human colorectal cancer Predicted cell location: Cytoplasm
Reactivity:	Human, Mouse, Rat
Host:	Rabbit
Isotype:	IgG
Clonality:	Polyclonal
Immunogen:	Fusion protein of human GBA2
Formulation:	pH7.4 PBS, 0.05% NaN <sub>3</sub> , 40% Glycerol
Purification:	Antigen affinity purification
Conjugation:	Unconjugated
Storage:	Store at -20°C.
Stability:	1 year
Gene Name:	glucosylceramidase beta 2
Database Link:	<a href="#">Entrez Gene 57704 Human Q9HCG7</a>
Background:	This gene encodes a microsomal beta-glucosidase that catalyzes the hydrolysis of bile acid 3-O-glucosides as endogenous compounds. Studies to determine subcellular localization of this protein in the liver indicated that the enzyme was mainly enriched in the microsomal fraction where it appeared to be confined to the endoplasmic reticulum. This putative transmembrane protein is thought to play a role in carbohydrate transport and metabolism.
Synonyms:	AD035; DKFZp762K054; KIAA1605; MGC16895; NLGase



[View online »](#)

**Product images:**

Immunohistochemistry of paraffin-embedded Human colorectal cancer tissue using [TA365917] (GBA2 Antibody) at dilution 1/55 (Original magnification: ×200)



Immunohistochemistry of paraffin-embedded Human colorectal cancer tissue using [TA365917] (GBA2 Antibody) at dilution 1/55, treated with fusion protein. (Original magnification: ×200)