

Product datasheet for **TA365916**

ORC1 Rabbit Polyclonal Antibody

Product data:

Product Type:	Primary Antibodies
Applications:	IHC
Recommended Dilution:	IHC: 50-300 Positive control: Human esophagus cancer Predicted cell location: Nucleus
Reactivity:	Human, Mouse, Rat
Host:	Rabbit
Isotype:	IgG
Clonality:	Polyclonal
Immunogen:	Fusion protein of human ORC1
Formulation:	pH7.4 PBS, 0.05% NaN ₃ , 40% Glycerol
Concentration:	lot specific
Purification:	Antigen affinity purification
Conjugation:	Unconjugated
Storage:	Store at -20°C.
Stability:	1 year
Gene Name:	origin recognition complex subunit 1
Database Link:	Entrez Gene 4998 Human Q13415



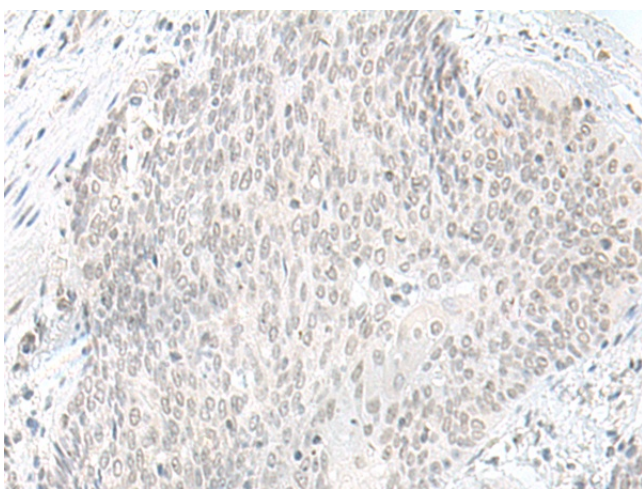
[View online »](#)

Background:

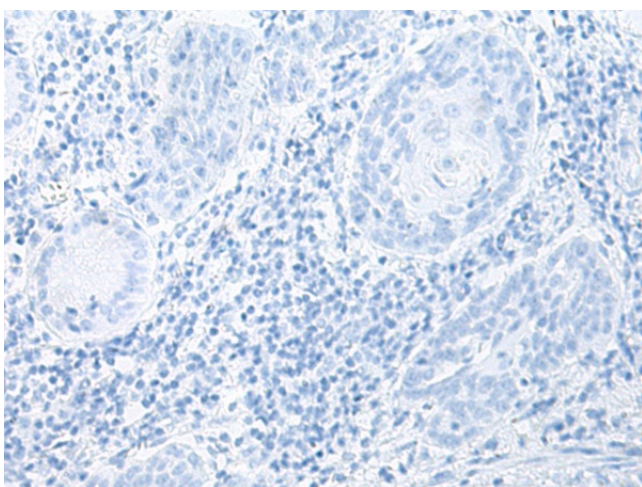
The origin recognition complex (ORC) is a highly conserved six subunits protein complex essential for the initiation of the DNA replication in eukaryotic cells. Studies in yeast demonstrated that ORC binds specifically to origins of replication and serves as a platform for the assembly of additional initiation factors such as Cdc6 and Mcm proteins. The protein encoded by this gene is the largest subunit of the ORC complex. While other ORC subunits are stable throughout the cell cycle, the levels of this protein vary during the cell cycle, which has been shown to be controlled by ubiquitin-mediated proteolysis after initiation of DNA replication. This protein is found to be selectively phosphorylated during mitosis. It is also reported to interact with MYST histone acetyltransferase 2 (MyST2/HBO1), a protein involved in control of transcription silencing. Alternatively spliced transcript variants encoding different isoforms have been found for this gene.

Synonyms:

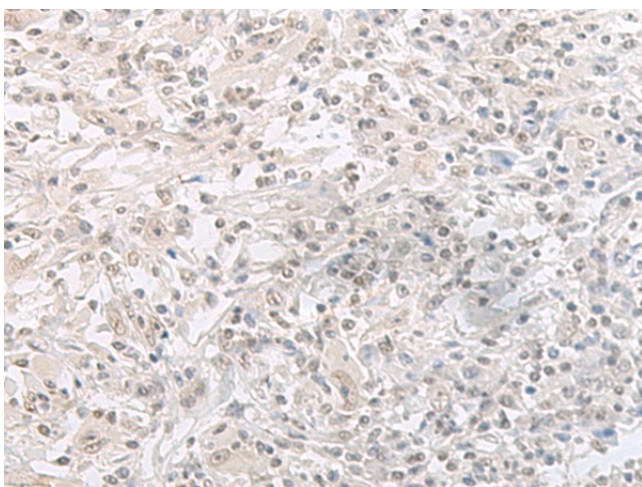
AA545195; MmORC1; Orc1l

Product images:

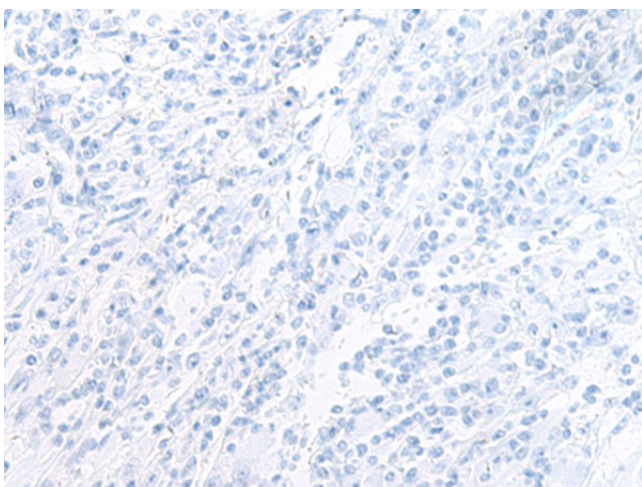
Immunohistochemistry of paraffin-embedded Human esophagus cancer tissue using TA365916 (ORC1 Antibody) at dilution 1/65 (Original magnification: ×200)



Immunohistochemistry of paraffin-embedded Human esophagus cancer tissue using TA365916 (ORC1 Antibody) at dilution 1/65, treated with fusion protein. (Original magnification: ×200)



Immunohistochemistry of paraffin-embedded Human liver cancer tissue using TA365916 (ORC1 Antibody) at dilution 1/65 (Original magnification: ×200)



Immunohistochemistry of paraffin-embedded Human liver cancer tissue using TA365916 (ORC1 Antibody) at dilution 1/65, treated with fusion protein. (Original magnification: ×200)