

Product datasheet for **TA365907**

Thimet Oligopeptidase (THOP1) Rabbit Polyclonal Antibody

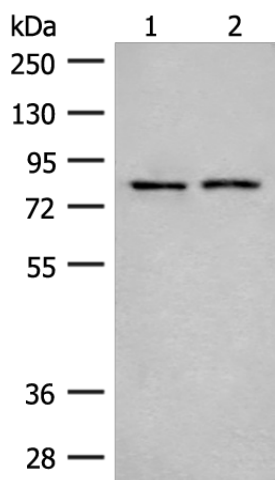
Product data:

Product Type:	Primary Antibodies
Applications:	IHC, WB
Recommended Dilution:	WB: 200-1000 WB positive control: A172 cell and Human fetal brain tissue lysates IHC: 30-150 Positive control: Human liver cancer Predicted cell location: Cytoplasm
Reactivity:	Human, Mouse, Rat
Host:	Rabbit
Isotype:	IgG
Clonality:	Polyclonal
Immunogen:	Fusion protein of human THOP1
Formulation:	pH7.4 PBS, 0.05% NaN ₃ , 40% Glycerol
Concentration:	lot specific
Purification:	Antigen affinity purification
Conjugation:	Unconjugated
Storage:	Store at -20°C.
Stability:	1 year
Predicted Protein Size:	79 kDa
Gene Name:	thimet oligopeptidase 1
Database Link:	Entrez Gene 7064 Human P52888
Background:	The protein encoded by this gene is a kininase that uses zinc as a cofactor. The encoded oligopeptidase cleaves cytosolic peptides, making them unavailable for display on antigen-presenting cells. This protein also cleaves neuropeptides under 20 aa in length and can degrade beta-amyloid precursor protein to amyloidogenic peptides.
Synonyms:	EP24.15; MEPD_HUMAN; MP78; TOP



[View online »](#)

Product images:



Gel: 8%SDS-PAGE

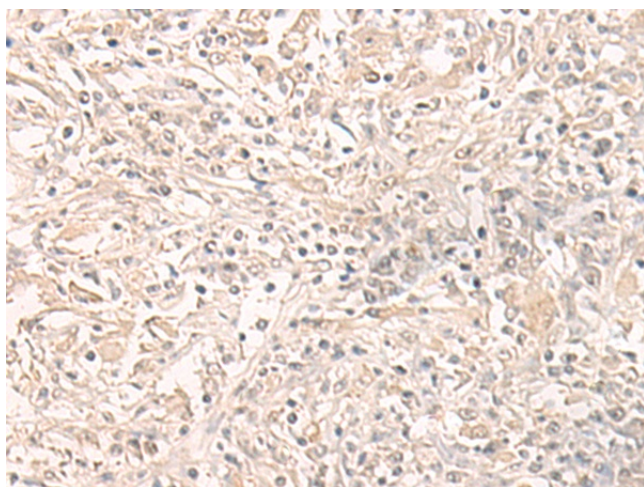
Lysate: 40 μ g

Lane 1-2: A172 cell and Human fetal brain tissue lysates

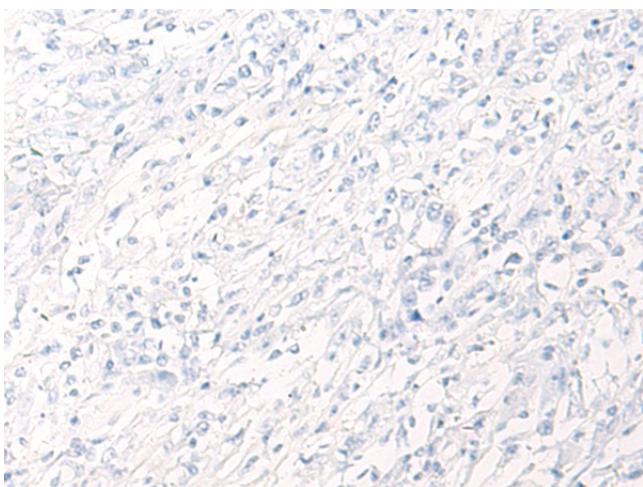
Primary antibody: TA365907 (THOP1 Antibody) at dilution 1/250

Secondary antibody: Goat anti rabbit IgG at 1/8000 dilution

Exposure time: 2 minutes



Immunohistochemistry of paraffin-embedded Human liver cancer tissue using TA365907 (THOP1 Antibody) at dilution 1/40 (Original magnification: \times 200)



Immunohistochemistry of paraffin-embedded Human liver cancer tissue using TA365907 (THOP1 Antibody) at dilution 1/40, treated with fusion protein. (Original magnification: $\times 200$)