

Product datasheet for **TA365905S**

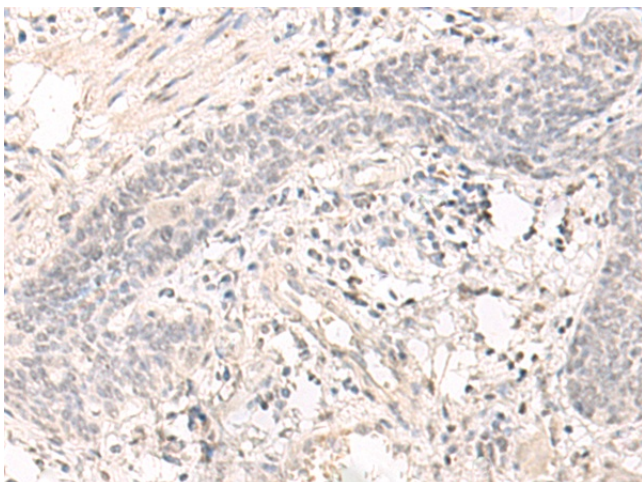
SAP130 Rabbit Polyclonal Antibody

Product data:

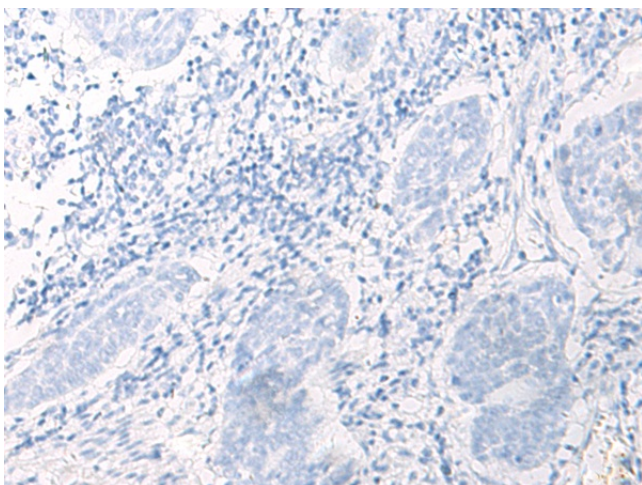
Product Type:	Primary Antibodies
Applications:	IHC
Recommended Dilution:	IHC: 30-150 Positive control: Human esophagus cancer Predicted cell location: Nucleus
Reactivity:	Human, Mouse
Host:	Rabbit
Isotype:	IgG
Clonality:	Polyclonal
Immunogen:	Fusion protein of human SAP130
Formulation:	pH7.4 PBS, 0.05% NaN ₃ , 40% Glycerol
Purification:	Antigen affinity purification
Conjugation:	Unconjugated
Storage:	Store at -20°C.
Stability:	1 year
Gene Name:	Sin3A associated protein 130kDa
Database Link:	Entrez Gene 79595 Human Q9H0E3
Background:	SAP130 is a subunit of the histone deacetylase (see HDAC1; MIM 601241)-dependent SIN3A (MIM 607776) corepressor complex (Fleischer et al., 2003 [PubMed 12724404]).
Synonyms:	FLJ12761



[View online »](#)

Product images:

Immunohistochemistry of paraffin-embedded Human esophagus cancer tissue using [TA365905] (SAP130 Antibody) at dilution 1/35 (Original magnification: $\times 200$)



Immunohistochemistry of paraffin-embedded Human esophagus cancer tissue using [TA365905] (SAP130 Antibody) at dilution 1/35, treated with fusion protein. (Original magnification: $\times 200$)