

Product datasheet for **TA365904S**

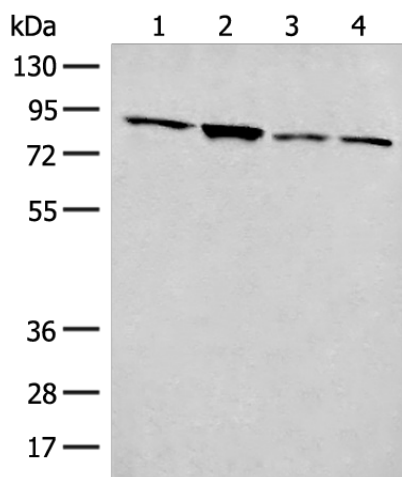
FOXRED2 Rabbit Polyclonal Antibody

Product data:

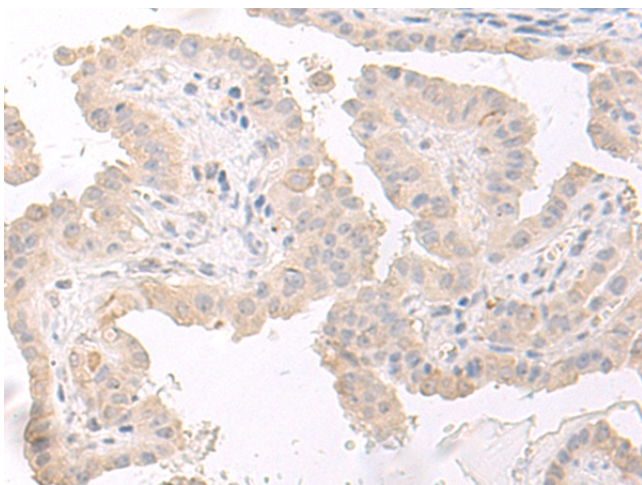
| | |
|-------------------------|--|
| Product Type: | Primary Antibodies |
| Applications: | IHC, WB |
| Recommended Dilution: | WB: 200-1000 WB positive control: 231, A549, LNCAP and HT-29 cell lysates IHC: 30-150 Positive control: Human thyroid cancer Predicted cell location: Cytoplasm |
| Reactivity: | Human |
| Host: | Rabbit |
| Isotype: | IgG |
| Clonality: | Polyclonal |
| Immunogen: | Fusion protein of human FOXRED2 |
| Formulation: | pH7.4 PBS, 0.05% NaN ₃ , 40% Glycerol |
| Purification: | Antigen affinity purification |
| Conjugation: | Unconjugated |
| Storage: | Store at -20°C. |
| Stability: | 1 year |
| Predicted Protein Size: | 78 kDa |
| Gene Name: | FAD dependent oxidoreductase domain containing 2 |
| Database Link: | Entrez Gene 80020 Human Q8IWF2 |
| Background: | Probable flavoprotein which may function in endoplasmic reticulum associated degradation (ERAD). May bind non-native proteins in the endoplasmic reticulum and target them to the ubiquitination machinery for subsequent degradation. |
| Synonyms: | ERFAD; FLJ23322; FLJ33734 |



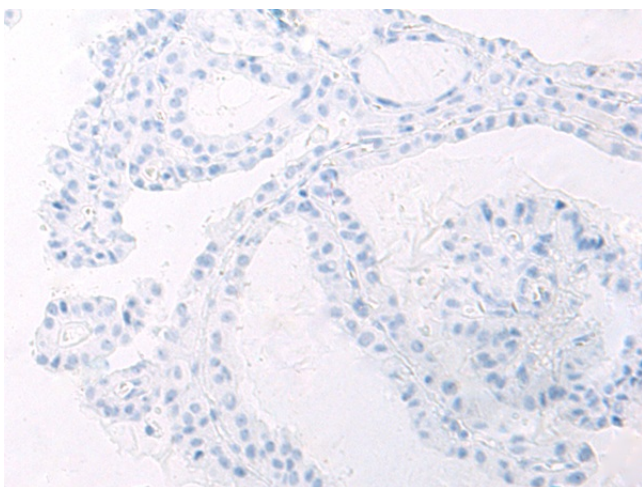
[View online »](#)

Product images:


Gel: 8%SDS-PAGE
 Lysate: 40 µg
 Lane 1-4: 231 A549
 LNCAP and HT-29 cell lysates
 Primary antibody: [TA365904] (FOXRED2 Antibody) at dilution 1/250
 Secondary antibody: Goat anti rabbit IgG at 1/8000 dilution
 Exposure time: 40 seconds



Immunohistochemistry of paraffin-embedded Human thyroid cancer tissue using [TA365904] (FOXRED2 Antibody) at dilution 1/45 (Original magnification: ×200)



Immunohistochemistry of paraffin-embedded Human thyroid cancer tissue using [TA365904] (FOXRED2 Antibody) at dilution 1/45, treated with fusion protein. (Original magnification: ×200)