

Product datasheet for **TA365904**

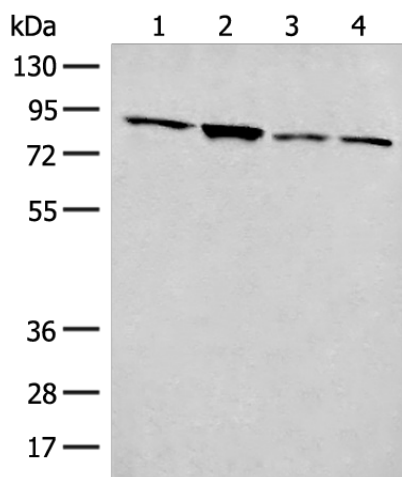
FOXRED2 Rabbit Polyclonal Antibody

Product data:

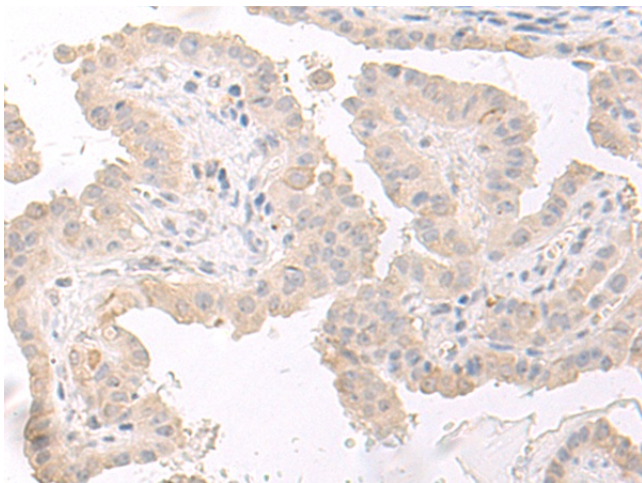
Product Type:	Primary Antibodies
Applications:	IHC, WB
Recommended Dilution:	WB: 200-1000 WB positive control: 231, A549, LNCAP and HT-29 cell lysates IHC: 30-150 Positive control: Human thyroid cancer Predicted cell location: Cytoplasm
Reactivity:	Human
Host:	Rabbit
Isotype:	IgG
Clonality:	Polyclonal
Immunogen:	Fusion protein of human FOXRED2
Formulation:	pH7.4 PBS, 0.05% NaN ₃ , 40% Glycerol
Concentration:	lot specific
Purification:	Antigen affinity purification
Conjugation:	Unconjugated
Storage:	Store at -20°C.
Stability:	1 year
Predicted Protein Size:	78 kDa
Gene Name:	FAD dependent oxidoreductase domain containing 2
Database Link:	Entrez Gene 80020 Human Q8IWF2
Background:	Probable flavoprotein which may function in endoplasmic reticulum associated degradation (ERAD). May bind non-native proteins in the endoplasmic reticulum and target them to the ubiquitination machinery for subsequent degradation.
Synonyms:	ERFAD; FLJ23322; FLJ33734



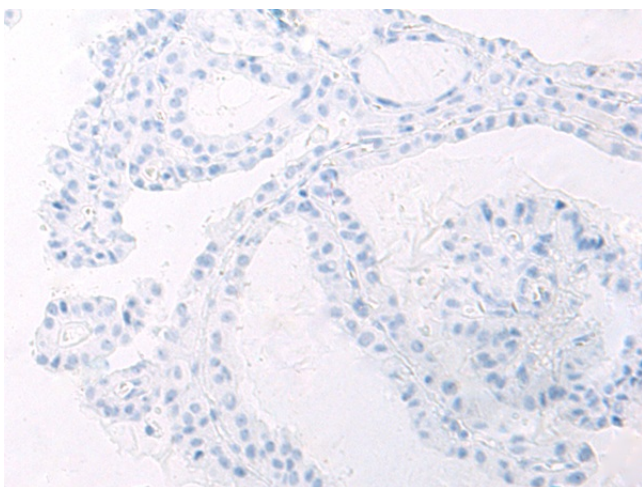
[View online »](#)

Product images:


Gel: 8%SDS-PAGE
 Lysate: 40 µg
 Lane 1-4: 231
 A549
 LNCAP and HT-29 cell lysates
 Primary antibody: TA365904 (FOXRED2 Antibody)
 at dilution 1/250
 Secondary antibody: Goat anti rabbit IgG at
 1/8000 dilution
 Exposure time: 40 seconds



Immunohistochemistry of paraffin-embedded
 Human thyroid cancer tissue using TA365904
 (FOXRED2 Antibody) at dilution 1/45 (Original
 magnification: x200)



Immunohistochemistry of paraffin-embedded Human thyroid cancer tissue using TA365904 (FOXRED2 Antibody) at dilution 1/45, treated with fusion protein. (Original magnification: ×200)