

## Product datasheet for **TA365901S**

### GCP4 (TUBGCP4) Rabbit Polyclonal Antibody

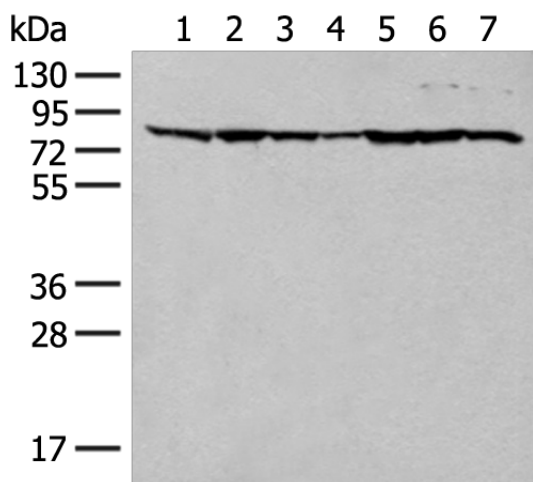
#### Product data:

Product Type:	Primary Antibodies
Applications:	WB
Recommended Dilution:	WB: 500-2000 WB positive control: HT-29, NIH/3T3, 231, HeLa, RAW264.7, K562 and LOVO cell lysates
Reactivity:	Human, Mouse
Host:	Rabbit
Isotype:	IgG
Clonality:	Polyclonal
Immunogen:	Fusion protein of human TUBGCP4
Formulation:	pH7.4 PBS, 0.05% NaN <sub>3</sub> , 40% Glycerol
Purification:	Antigen affinity purification
Conjugation:	Unconjugated
Storage:	Store at -20°C.
Stability:	1 year
Predicted Protein Size:	76 kDa
Gene Name:	tubulin gamma complex associated protein 4
Database Link:	<a href="#">Entrez Gene 27229 Human Q9UGJ1</a>
Background:	This gene encodes a component of the gamma-tubulin ring complex, which is required for microtubule nucleation. In mammalian cells, the protein localizes to centrosomes in association with gamma-tubulin. Crystal structure analysis revealed a structure composed of five helical bundles arranged around conserved hydrophobic cores. An exposed surface area located in the C-terminal domain is essential and sufficient for direct binding to gamma-tubulin. Mutations in this gene that alter microtubule organization are associated with microcephaly and chorioretinopathy. Alternative splicing results in multiple transcript variants.
Synonyms:	76P; FLJ14797; GCP-4; GCP4; h76p; hGCP4; Hgrip76



[View online »](#)

## Product images:



Gel: 8%SDS-PAGE

Lysate: 40 µg

Lane 1-7: HT-29

NIH/3T3

231

HeLa

RAW264.7

K562 and LOVO cell lysates

Primary antibody: [TA365901] (TUBGCP4

Antibody) at dilution 1/300

Secondary antibody: Goat anti rabbit IgG at

1/8000 dilution

Exposure time: 1 minute