

## Product datasheet for **TA365886S**

### HBP1 Rabbit Polyclonal Antibody

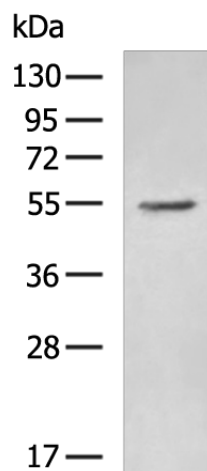
#### Product data:

Product Type:	Primary Antibodies
Applications:	WB
Recommended Dilution:	WB: 500-2000 WB positive control: HUVEC cell lysate
Reactivity:	Human, Mouse, Rat
Host:	Rabbit
Isotype:	IgG
Clonality:	Polyclonal
Immunogen:	Fusion protein of human HBP1
Formulation:	pH7.4 PBS, 0.05% NaN <sub>3</sub> , 40% Glycerol
Purification:	Antigen affinity purification
Conjugation:	Unconjugated
Storage:	Store at -20°C.
Stability:	1 year
Predicted Protein Size:	58 kDa
Gene Name:	HMG-box transcription factor 1
Database Link:	<a href="#">Entrez Gene 26959 Human O60381</a>
Background:	HMG-box protein 1 (HBP1) is a transcriptional repressor, and has a role in cell cycle progression and tumor suppression. Also it's a repressor of the cyclin D1 gene and inhibits the Wnt signaling pathway. Interaction with RB1 enhances it's binding to the H1F0 promoter . Disrupts the interaction between DNA and TCF4. This is a rabbit polyclonal antibody raised against part of C-terminus of HBP1 of human origin.
Synonyms:	FLJ16340



[View online »](#)

## Product images:



Gel: 8%SDS-PAGE  
Lysate: 40  $\mu$ g  
Lane: HUVEC cell lysate  
Primary antibody: [TA365886] (HBP1 Antibody) at dilution 1/800  
Secondary antibody: Goat anti rabbit IgG at 1/5000 dilution  
Exposure time: 1 minute