

Product datasheet for **TA365885**

XPNPEP3 Rabbit Polyclonal Antibody

Product data:

Product Type:	Primary Antibodies
Applications:	IHC, WB
Recommended Dilution:	WB: 200-1000 WB positive control: PC-3 cell and Human fetal liver tissue lysates IHC: 30-150 Positive control: Human cervical cancer Predicted cell location: Cytoplasm
Reactivity:	Human, Mouse, Rat
Host:	Rabbit
Isotype:	IgG
Clonality:	Polyclonal
Immunogen:	Fusion protein of human XPNPEP3
Formulation:	pH7.4 PBS, 0.05% NaN ₃ , 40% Glycerol
Concentration:	lot specific
Purification:	Antigen affinity purification
Conjugation:	Unconjugated
Storage:	Store at -20°C.
Stability:	1 year
Predicted Protein Size:	57 kDa
Gene Name:	X-prolyl aminopeptidase 3, mitochondrial
Database Link:	Entrez Gene 63929 Human Q9NQH7



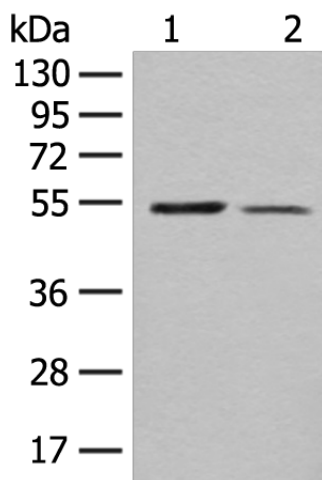
[View online »](#)

Background:

The protein encoded by this gene belongs to the family of X-pro-aminopeptidases that utilize a metal cofactor, and remove the N-terminal amino acid from peptides with a proline residue in the penultimate position. This protein has been shown to localize to the mitochondria of renal cells, and have a role in ciliary function. Mutations in this gene are associated with nephronophthisis-like nephropathy-1. Alternatively spliced transcript variants encoding different isoforms have been noted for this gene, however, expression of some of these isoforms in vivo is not known.

Synonyms:

APP3

Product images:

Gel: 8%SDS-PAGE

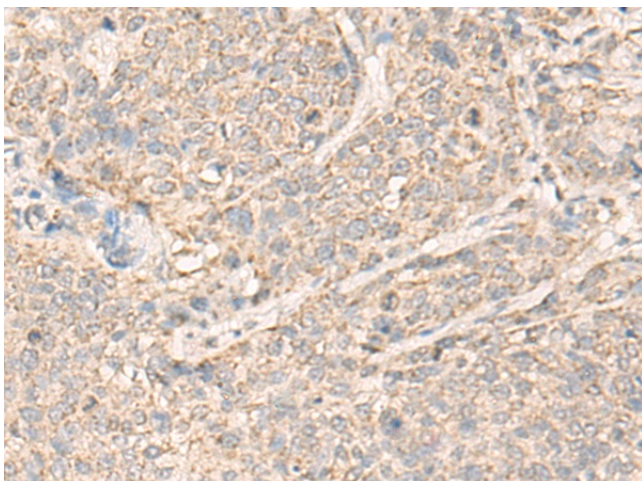
Lysate: 40 μ g

Lane 1-2: PC-3 cell and Human fetal liver tissue lysates

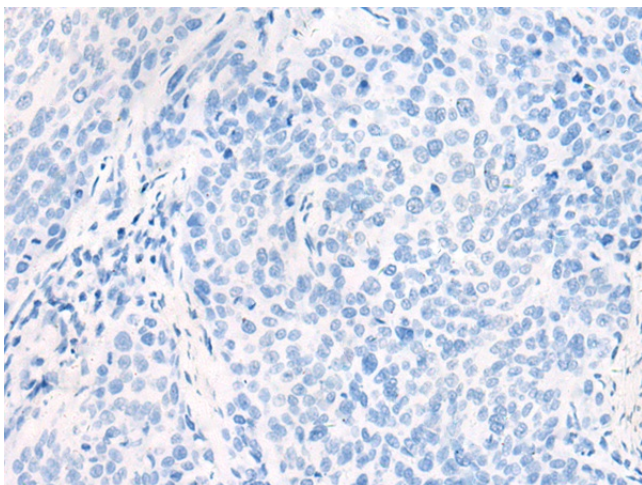
Primary antibody: TA365885 (XPNPEP3 Antibody) at dilution 1/250

Secondary antibody: Goat anti rabbit IgG at 1/8000 dilution

Exposure time: 30 seconds



Immunohistochemistry of paraffin-embedded Human cervical cancer tissue using TA365885 (XPNPEP3 Antibody) at dilution 1/20 (Original magnification: \times 200)



Immunohistochemistry of paraffin-embedded Human cervical cancer tissue using TA365885 (XPNPEP3 Antibody) at dilution 1/20, treated with fusion protein. (Original magnification: $\times 200$)