

## Product datasheet for **TA365884**

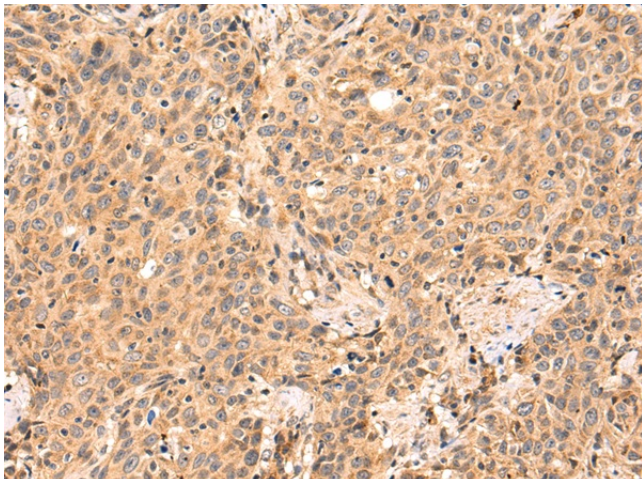
### THUMPD3 Rabbit Polyclonal Antibody

#### Product data:

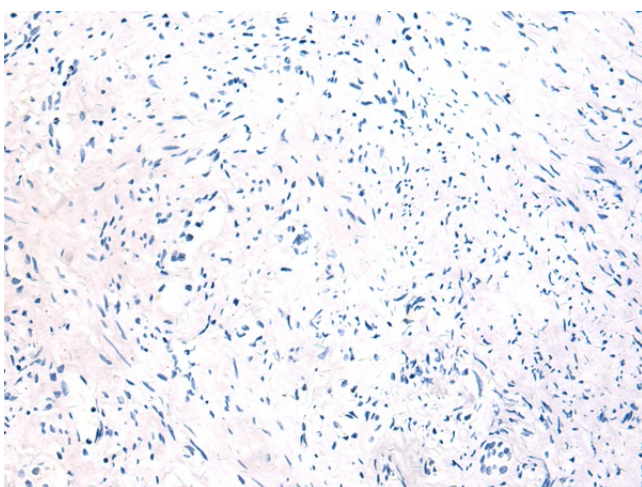
Product Type:	Primary Antibodies
Applications:	IHC
Recommended Dilution:	IHC: 100-300 Positive control: Human prostate cancer Predicted cell location: Cytoplasm or Nucleus
Reactivity:	Human, Mouse
Host:	Rabbit
Isotype:	IgG
Clonality:	Polyclonal
Immunogen:	Fusion protein of human THUMPD3
Formulation:	pH7.4 PBS, 0.05% NaN <sub>3</sub> , 40% Glycerol
Concentration:	lot specific
Purification:	Antigen affinity purification
Conjugation:	Unconjugated
Storage:	Store at -20°C.
Stability:	1 year
Gene Name:	THUMP domain containing 3
Database Link:	<a href="#">Entrez Gene 25917 Human Q9BV44</a>
Background:	The function of this protein remains unknown.
Synonyms:	DKFZP434F091; OTTHUMP00000207150



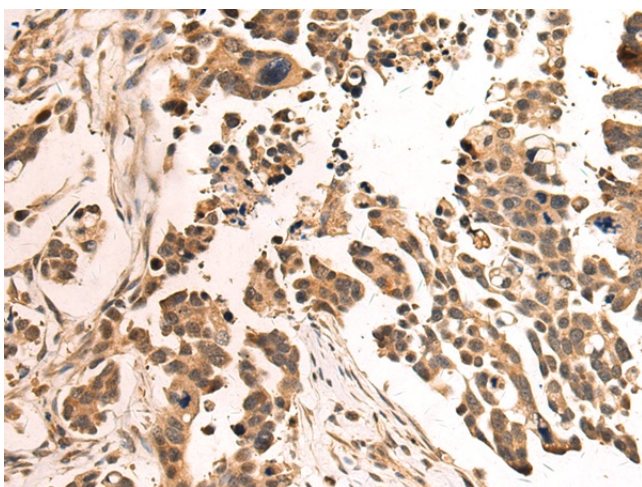
[View online »](#)

**Product images:**

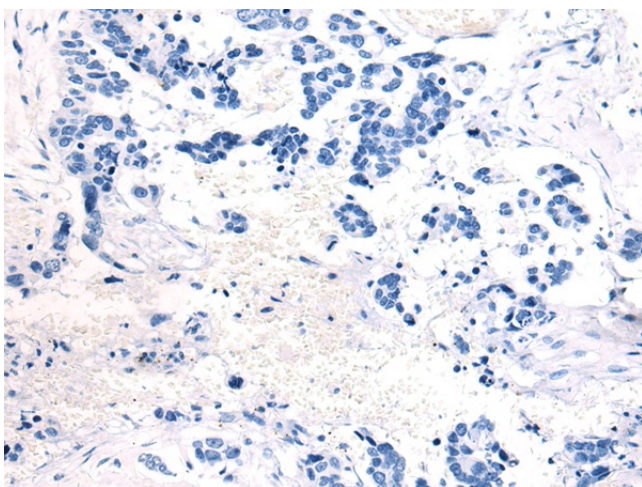
Immunohistochemistry of paraffin-embedded Human prostate cancer tissue using TA365884 (THUMPD3 Antibody) at dilution 1/90 (Original magnification:  $\times 200$ )



Immunohistochemistry of paraffin-embedded Human prostate cancer tissue using TA365884 (THUMPD3 Antibody) at dilution 1/90, treated with fusion protein. (Original magnification:  $\times 200$ )



Immunohistochemistry of paraffin-embedded Human colorectal cancer tissue using TA365884 (THUMPD3 Antibody) at dilution 1/90 (Original magnification:  $\times 200$ )



Immunohistochemistry of paraffin-embedded Human colorectal cancer tissue using TA365884 (THUMPD3 Antibody) at dilution 1/90, treated with fusion protein. (Original magnification:  $\times 200$ )