

Product datasheet for **TA365879S**

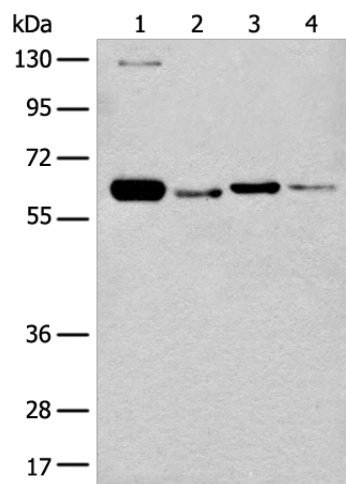
DUS2L (DUS2) Rabbit Polyclonal Antibody

Product data:

Product Type:	Primary Antibodies
Applications:	WB
Recommended Dilution:	WB: 200-1000 WB positive control: HEPG2 RAW264.7 A549 and Hela cell lysates
Reactivity:	Human, Mouse
Host:	Rabbit
Isotype:	IgG
Clonality:	Polyclonal
Immunogen:	Fusion protein of human DUS2
Formulation:	pH7.4 PBS, 0.05% NaN ₃ , 40% Glycerol
Purification:	Antigen affinity purification
Conjugation:	Unconjugated
Storage:	Store at -20°C.
Stability:	1 year
Predicted Protein Size:	55 kDa
Gene Name:	dihydrouridine synthase 2
Database Link:	Entrez Gene 54920 Human Q9NX74
Background:	This gene encodes a cytoplasmic protein that catalyzes the conversion of uridine residues to dihydrouridine in the D-loop of tRNA. The resulting modified bases confer enhanced regional flexibility to tRNA. The encoded protein may increase the rate of translation by inhibiting an interferon-induced protein kinase. This gene has been implicated in pulmonary carcinogenesis. Alternatively spliced transcript variants have been described for this gene.

[View online »](#)

Product images:



Gel: 8%SDS-PAGE
 Lysate: 40 µg
 Lane 1-4: HEPG2
 RAW264.7
 A549 and HeLa cell lysates
 Primary antibody: [TA365879] (DUS2 Antibody) at
 dilution 1/200
 Secondary antibody: Goat anti rabbit IgG at
 1/8000 dilution
 Exposure time: 1 minute