

## Product datasheet for **TA365873**

### SHC (SHC1) Rabbit Polyclonal Antibody

#### Product data:

Product Type:	Primary Antibodies
Applications:	IHC, WB
Recommended Dilution:	WB: 200-1000 WB positive control: 231, RAW264.7, Jurkat, 293T, NIH/3T3, HEPG2 and Hela cell lysates IHC: 30-150 Positive control: Human thyroid cancer Predicted cell location: Cytoplasm
Reactivity:	Human, Mouse, Rat
Host:	Rabbit
Isotype:	IgG
Clonality:	Polyclonal
Immunogen:	Fusion protein of human SHC1
Formulation:	pH7.4 PBS, 0.05% NaN <sub>3</sub> , 40% Glycerol
Concentration:	lot specific
Purification:	Antigen affinity purification
Conjugation:	Unconjugated
Storage:	Store at -20°C.
Stability:	1 year
Predicted Protein Size:	63 kDa
Gene Name:	SHC adaptor protein 1
Database Link:	<a href="#">Entrez Gene 6464 Human P29353</a>



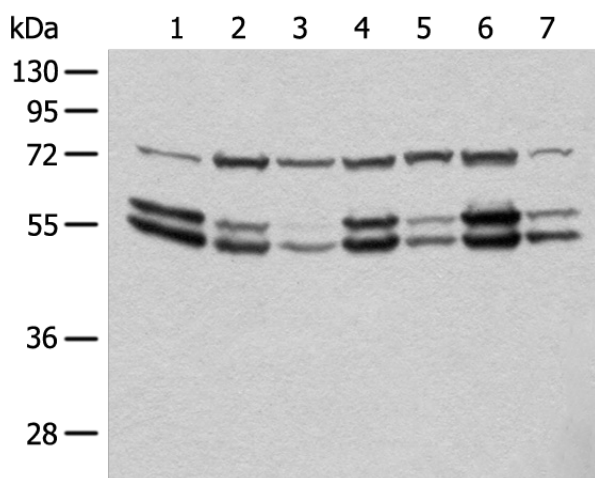
[View online »](#)

**Background:**

This gene encodes three main isoforms that differ in activities and subcellular location. While all three are adapter proteins in signal transduction pathways, the longest (p66Shc) may be involved in regulating life span and the effects of reactive oxygen species. The other two isoforms, p52Shc and p46Shc, link activated receptor tyrosine kinases to the Ras pathway by recruitment of the GRB2/SOS complex. p66Shc is not involved in Ras activation. Unlike the other two isoforms, p46Shc is targeted to the mitochondrial matrix. Several transcript variants encoding different isoforms have been found for this gene.

**Synonyms:**

FLJ26504; OTTHUMP00000035472; p66; SHC; SHCA

**Product images:**

Gel: 8%SDS-PAGE

Lysate: 40  $\mu$ g

Lane 1-7: 231

RAW264.7

Jurkat

293T

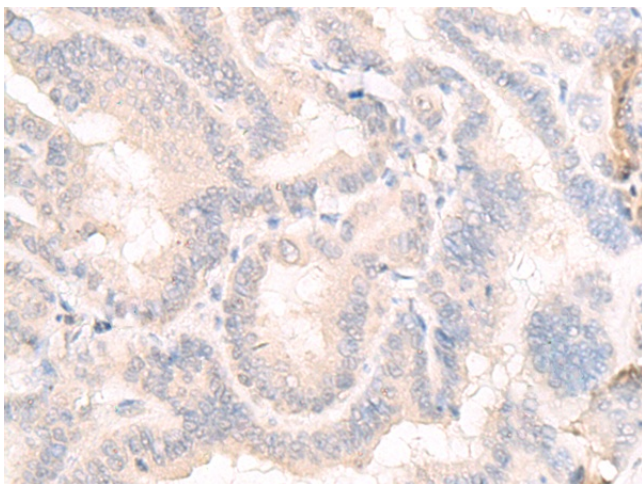
NIH/3T3

HEPG2 and HeLa cell lysates

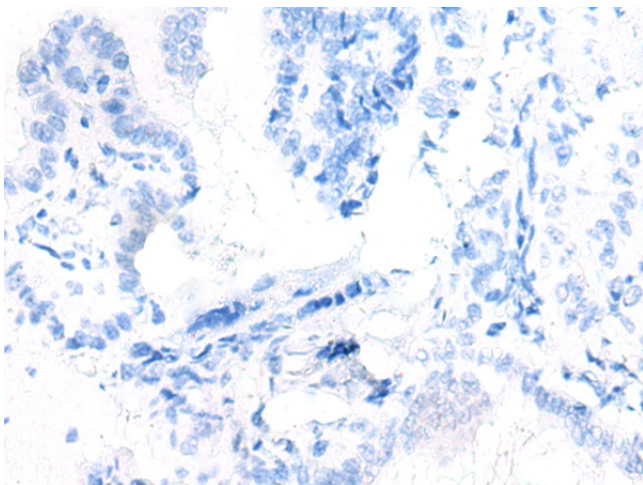
Primary antibody: TA365873 (SHC1 Antibody) at dilution 1/300

Secondary antibody: Goat anti rabbit IgG at 1/8000 dilution

Exposure time: 30 seconds



Immunohistochemistry of paraffin-embedded Human thyroid cancer tissue using TA365873 (SHC1 Antibody) at dilution 1/20 (Original magnification:  $\times$ 200)



Immunohistochemistry of paraffin-embedded Human thyroid cancer tissue using TA365873 (SHC1 Antibody) at dilution 1/20, treated with fusion protein. (Original magnification: ×200)