

## Product datasheet for **TA365865S**

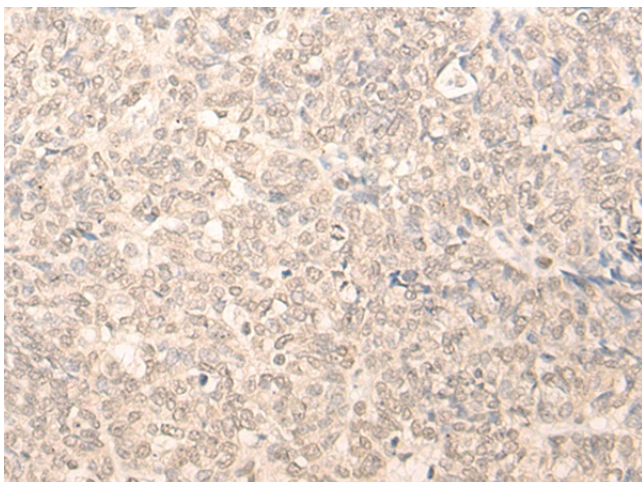
### **RUVBL2 Rabbit Polyclonal Antibody**

#### **Product data:**

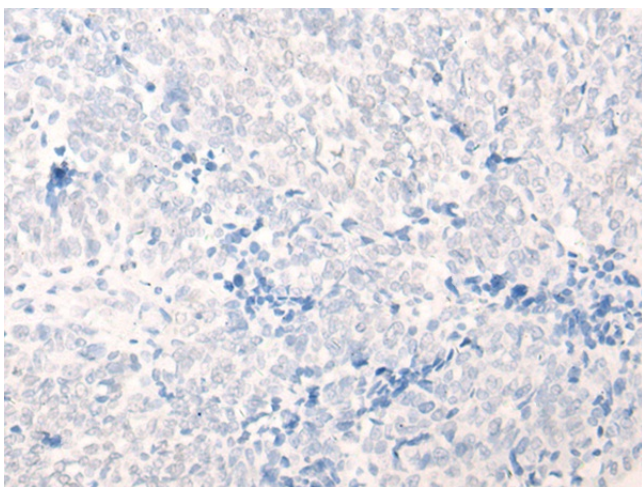
<b>Product Type:</b>	Primary Antibodies
<b>Applications:</b>	IHC
<b>Recommended Dilution:</b>	IHC: 30-150 Positive control: Human ovarian cancer Predicted cell location: Nucleus and Cytoplasm
<b>Reactivity:</b>	Human, Mouse
<b>Host:</b>	Rabbit
<b>Isotype:</b>	IgG
<b>Clonality:</b>	Polyclonal
<b>Immunogen:</b>	Fusion protein of human RUVBL2
<b>Formulation:</b>	pH7.4 PBS, 0.05% NaN <sub>3</sub> , 40% Glycerol
<b>Purification:</b>	Antigen affinity purification
<b>Conjugation:</b>	Unconjugated
<b>Storage:</b>	Store at -20°C.
<b>Stability:</b>	1 year
<b>Gene Name:</b>	RuvB like AAA ATPase 2
<b>Database Link:</b>	<a href="#">Entrez Gene 10856 Human Q9Y230</a>
<b>Background:</b>	This gene encodes the second human homologue of the bacterial RuvB gene. Bacterial RuvB protein is a DNA helicase essential for homologous recombination and DNA double-strand break repair. Functional analysis showed that this gene product has both ATPase and DNA helicase activities. This gene is physically linked to the CGB/LHB gene cluster on chromosome 19q13.3, and is very close (55 nt) to the LHB gene, in the opposite orientation.
<b>Synonyms:</b>	CGI-46; ECP-51; ECP51; INO80J; REPTIN; Reptin52; RVB2; TAP54-beta; TIH2; TIP48; TIP49b



[View online »](#)

**Product images:**

Immunohistochemistry of paraffin-embedded Human ovarian cancer tissue using [TA365865] (RUVBL2 Antibody) at dilution 1/25 (Original magnification:  $\times 200$ )



Immunohistochemistry of paraffin-embedded Human ovarian cancer tissue using [TA365865] (RUVBL2 Antibody) at dilution 1/25, treated with fusion protein. (Original magnification:  $\times 200$ )