

## Product datasheet for **TA365864**

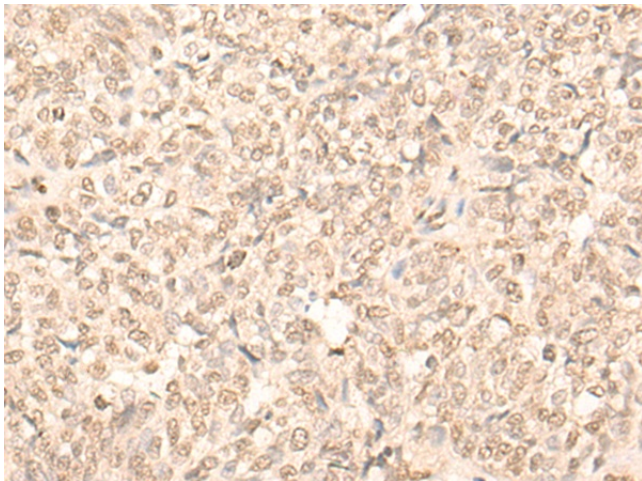
### MLLT6 Rabbit Polyclonal Antibody

#### Product data:

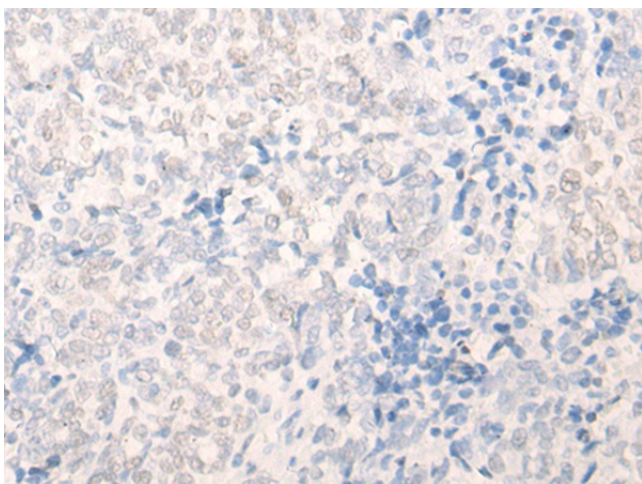
Product Type:	Primary Antibodies
Applications:	IHC
Recommended Dilution:	IHC: 30-150 Positive control: Human ovarian cancer Predicted cell location: Nucleus
Reactivity:	Human
Host:	Rabbit
Isotype:	IgG
Clonality:	Polyclonal
Immunogen:	Fusion protein of human MLLT6
Formulation:	pH7.4 PBS, 0.05% NaN <sub>3</sub> , 40% Glycerol
Concentration:	lot specific
Purification:	Antigen affinity purification
Conjugation:	Unconjugated
Storage:	Store at -20°C.
Stability:	1 year
Gene Name:	myeloid/lymphoid or mixed-lineage leukemia; translocated to, 6
Database Link:	<a href="#">Entrez Gene 4302 Human P55198</a>
Background:	AF17 was discovered as part of a genetic rearrangement in the MLL (mixed lineage leukemia) gene associated with acute myeloid leukemia. AF17 is also known as MLLT6.
Synonyms:	AF17; FLJ23480



[View online »](#)

**Product images:**

Immunohistochemistry of paraffin-embedded Human ovarian cancer tissue using TA365864 (MLLT6 Antibody) at dilution 1/20 (Original magnification:  $\times 200$ )



Immunohistochemistry of paraffin-embedded Human ovarian cancer tissue using TA365864 (MLLT6 Antibody) at dilution 1/20, treated with fusion protein. (Original magnification:  $\times 200$ )