

## Product datasheet for **TA365861S**

### TIP49A (RUVBL1) Rabbit Polyclonal Antibody

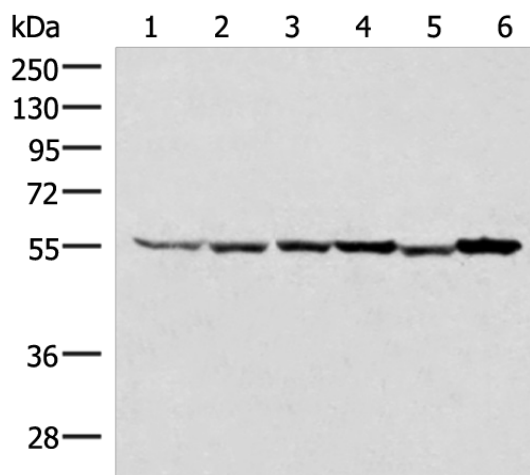
#### Product data:

Product Type:	Primary Antibodies
Applications:	IHC, WB
Recommended Dilution:	WB: 1000-5000 WB positive control: 293T, HepG2, K562, HT29, A549 and Raji cell lysates IHC: 50-300 Positive control: Human thyroid cancer Predicted cell location: Nucleus
Reactivity:	Human, Mouse, Rat
Host:	Rabbit
Isotype:	IgG
Clonality:	Polyclonal
Immunogen:	Fusion protein of human RUVBL1
Formulation:	pH7.4 PBS, 0.05% NaN <sub>3</sub> , 40% Glycerol
Purification:	Antigen affinity purification
Conjugation:	Unconjugated
Storage:	Store at -20°C.
Stability:	1 year
Predicted Protein Size:	50 kDa
Gene Name:	RuvB like AAA ATPase 1
Database Link:	<a href="#">Entrez Gene 8607 Human Q9Y265</a>
Background:	This gene encodes a protein that has both DNA-dependent ATPase and DNA helicase activities and belongs to the ATPases associated with diverse cellular activities (AAA+) protein family. The encoded protein associates with several multisubunit transcriptional complexes and with protein complexes involved in both ATP-dependent remodeling and histone modification. Alternate splicing results in multiple transcript variants.
Synonyms:	ECP-54; ECP54; INO80H; NMP238; PONTIN; Pontin52; RVB1; TAP54-alpha; TIH1; TIP49; TIP49a



[View online »](#)

## Product images:



Gel: 8%SDS-PAGE

Lysate: 40  $\mu$ g

Lane 1-6: 293T

HepG2

K562

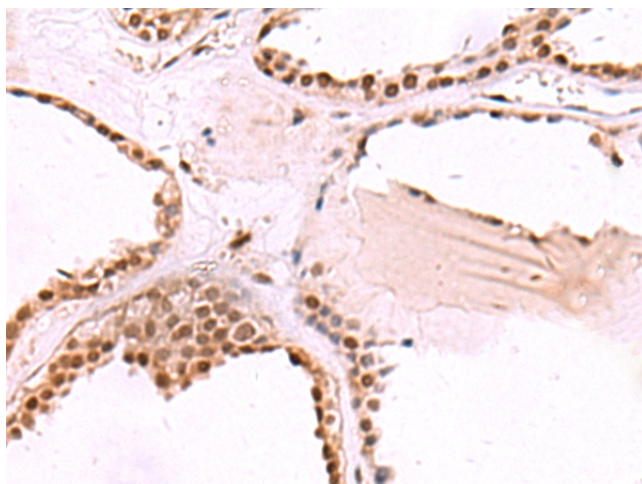
HT29

A549 and Raji cell lysates

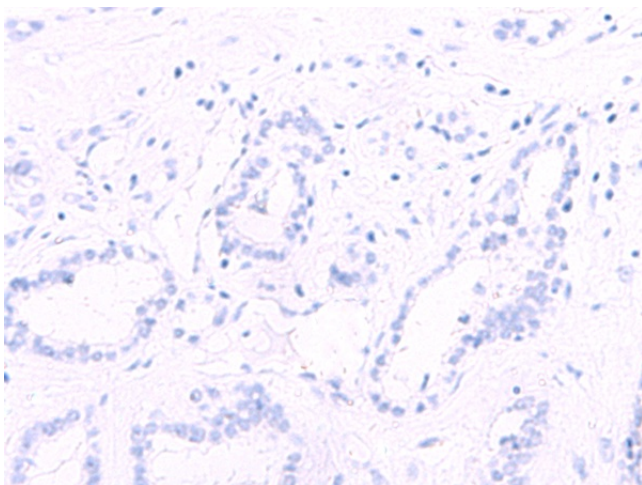
Primary antibody: [TA365861] (RUVBL1 Antibody)  
at dilution 1/2000

Secondary antibody: Goat anti rabbit IgG at  
1/8000 dilution

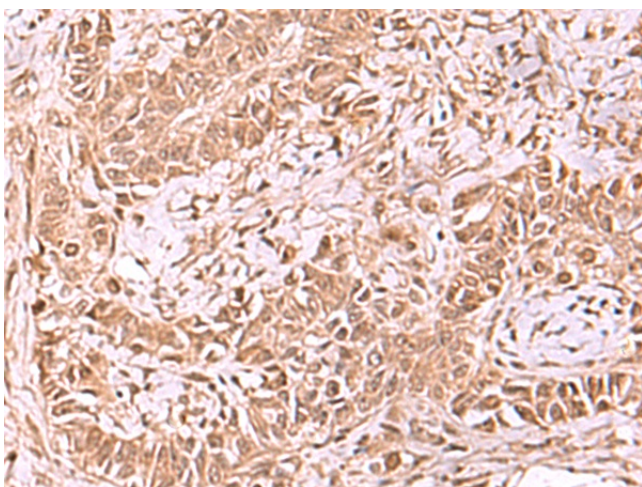
Exposure time: 15 seconds



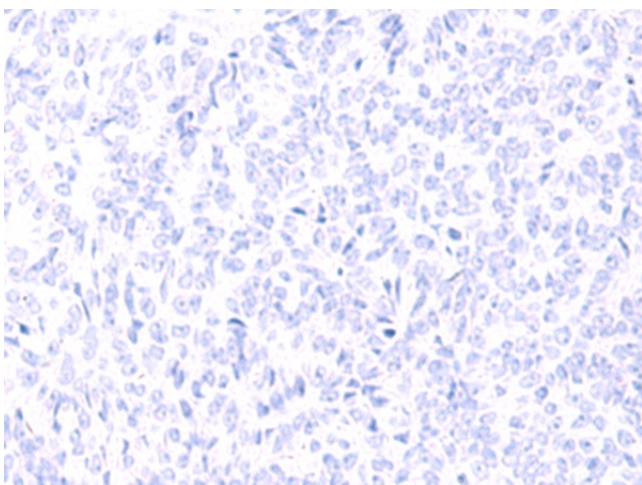
Immunohistochemistry of paraffin-embedded  
Human thyroid cancer tissue using [TA365861]  
(RUVBL1 Antibody) at dilution 1/65 (Original  
magnification:  $\times$ 200)



Immunohistochemistry of paraffin-embedded Human thyroid cancer tissue using [TA365861] (RUVBL1 Antibody) at dilution 1/65, treated with fusion protein. (Original magnification:  $\times 200$ )



Immunohistochemistry of paraffin-embedded Human ovarian cancer tissue using [TA365861] (RUVBL1 Antibody) at dilution 1/65 (Original magnification:  $\times 200$ )



Immunohistochemistry of paraffin-embedded Human ovarian cancer tissue using [TA365861] (RUVBL1 Antibody) at dilution 1/65, treated with fusion protein. (Original magnification:  $\times 200$ )