

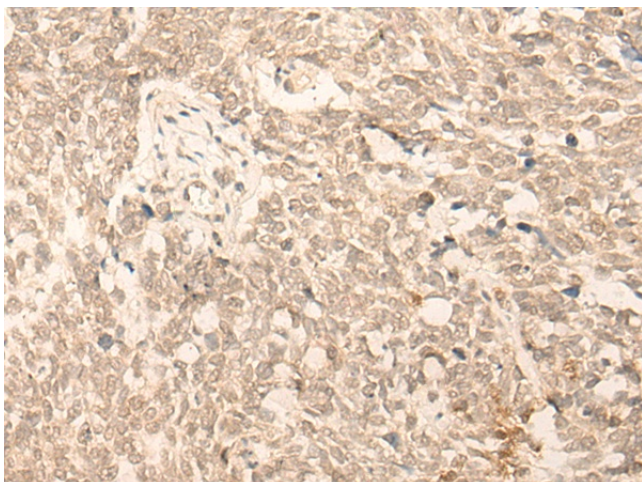
Product datasheet for **TA365849**

IFRD2 Rabbit Polyclonal Antibody

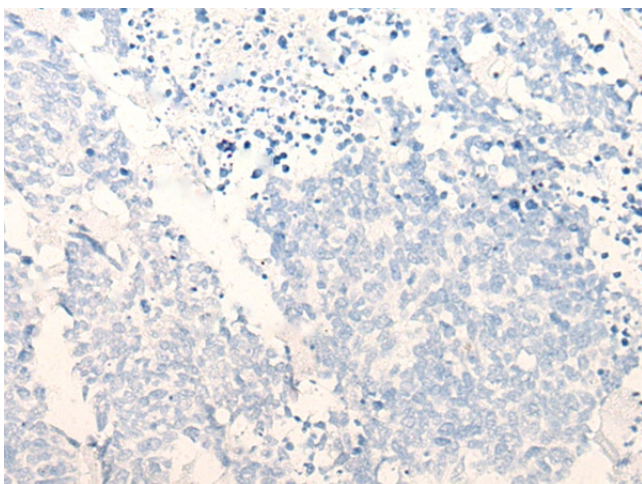
Product data:

Product Type:	Primary Antibodies
Applications:	IHC
Recommended Dilution:	IHC: 30-150 Positive control: Human lung cancer Predicted cell location: Nucleus
Reactivity:	Human
Host:	Rabbit
Isotype:	IgG
Clonality:	Polyclonal
Immunogen:	Fusion protein of human IFRD2
Formulation:	pH7.4 PBS, 0.05% NaN ₃ , 40% Glycerol
Concentration:	lot specific
Purification:	Antigen affinity purification
Conjugation:	Unconjugated
Storage:	Store at -20°C.
Stability:	1 year
Gene Name:	interferon-related developmental regulator 2
Database Link:	Entrez Gene 7866 Human Q12894
Background:	IFRD2 (Interferon-related developmental regulator 2), also known as SKMC15, is a 442 amino acid soluble nuclear protein. IFRD2 is ubiquitously expressed and contains a β -catenin-like repeat, which may indicate an involvement in APC signaling. With 75% homology to IFRD1, IFRD2 may also regulate expression of surface adhesion molecules involved in differentiation and fusion of myogenic satellite cells. Although the gene encoding IFRD2 undergoes overlapping homozygous deletions in many lung cancer cell lines, IFRD2 exhibits no loss-of-function mutations in cancer cells, suggesting a possible role in tumor progression.
Synonyms:	FLJ40446; IFNRP; SKMc15; SM15

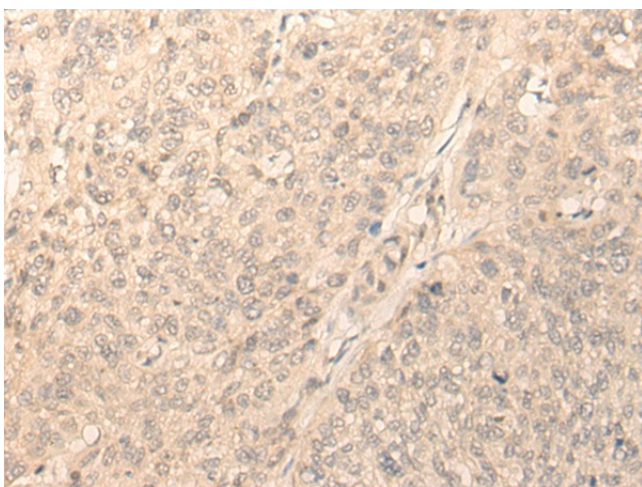
[View online »](#)

Product images:

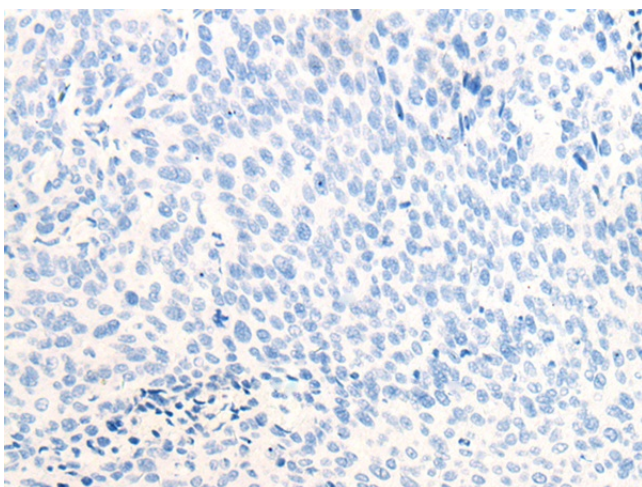
Immunohistochemistry of paraffin-embedded Human lung cancer tissue using TA365849 (IFRD2 Antibody) at dilution 1/20 (Original magnification: ×200)



Immunohistochemistry of paraffin-embedded Human lung cancer tissue using TA365849 (IFRD2 Antibody) at dilution 1/20, treated with fusion protein. (Original magnification: ×200)



Immunohistochemistry of paraffin-embedded Human cervical cancer tissue using TA365849 (IFRD2 Antibody) at dilution 1/20 (Original magnification: ×200)



Immunohistochemistry of paraffin-embedded Human cervical cancer tissue using TA365849 (IFRD2 Antibody) at dilution 1/20, treated with fusion protein. (Original magnification: ×200)