

## Product datasheet for **TA365841**

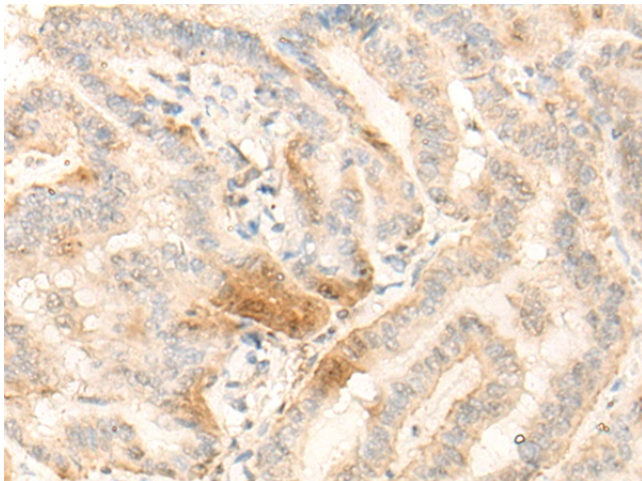
### **BZW2 Rabbit Polyclonal Antibody**

#### **Product data:**

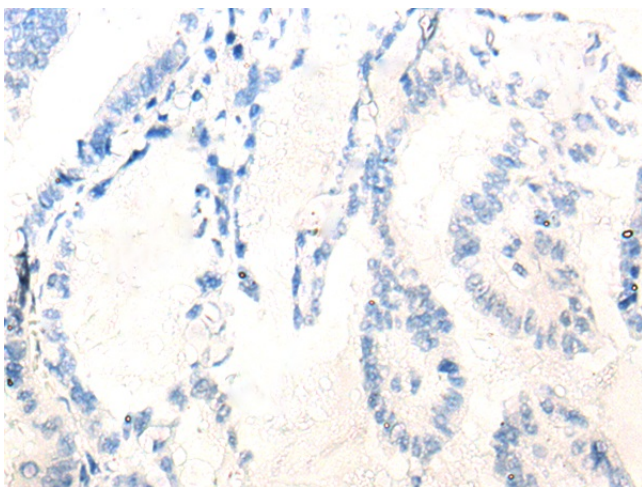
Product Type:	Primary Antibodies
Applications:	IHC
Recommended Dilution:	IHC: 30-150 Positive control: Human thyroid cancer Predicted cell location: Cytoplasm
Reactivity:	Human, Mouse, Rat
Host:	Rabbit
Isotype:	IgG
Clonality:	Polyclonal
Immunogen:	Fusion protein of human BZW2
Formulation:	pH7.4 PBS, 0.05% NaN <sub>3</sub> , 40% Glycerol
Concentration:	lot specific
Purification:	Antigen affinity purification
Conjugation:	Unconjugated
Storage:	Store at -20°C.
Stability:	1 year
Gene Name:	basic leucine zipper and W2 domains 2
Database Link:	<a href="#">Entrez Gene 28969 Human Q9Y6E2</a>
Background:	May be involved in neuronal differentiation.
Synonyms:	HSPC028; MST017; MSTP017



[View online »](#)

**Product images:**

Immunohistochemistry of paraffin-embedded Human thyroid cancer tissue using TA365841 (BZW2 Antibody) at dilution 1/25 (Original magnification:  $\times 200$ )



Immunohistochemistry of paraffin-embedded Human thyroid cancer tissue using TA365841 (BZW2 Antibody) at dilution 1/25, treated with fusion protein. (Original magnification:  $\times 200$ )