

Product datasheet for **TA365826**

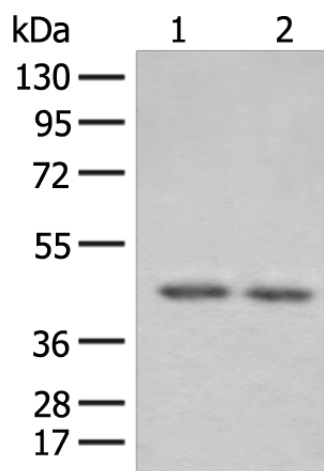
ILKAP Rabbit Polyclonal Antibody

Product data:

Product Type:	Primary Antibodies
Applications:	IHC, WB
Recommended Dilution:	WB: 500-2000 WB positive control: Hela and 293T cell lysates IHC: 50-300 Positive control: Human ovarian cancer Predicted cell location: Nucleus
Reactivity:	Human, Mouse, Rat
Host:	Rabbit
Isotype:	IgG
Clonality:	Polyclonal
Immunogen:	Fusion protein of human ILKAP
Formulation:	pH7.4 PBS, 0.05% NaN ₃ , 40% Glycerol
Concentration:	lot specific
Purification:	Antigen affinity purification
Conjugation:	Unconjugated
Storage:	Store at -20°C.
Stability:	1 year
Predicted Protein Size:	43 kDa
Gene Name:	ILK associated serine/threonine phosphatase
Database Link:	Entrez Gene 80895 Human Q9H0C8
Background:	The protein encoded by this gene is a protein serine/threonine phosphatase of the PP2C family. This protein can interact with integrin-linked kinase (ILK/ILK1), a regulator of integrin mediated signaling, and regulate the kinase activity of ILK. Through the interaction with ILK, this protein may selectively affect the signaling process of ILK-mediated glycogen synthase kinase 3 beta (GSK3beta), and thus participate in Wnt signaling pathway.
Synonyms:	DKFZp434J2031; FLJ10181; MGC4846; PP2C-DELTA



[View online »](#)

Product images:

Gel: 8%SDS-PAGE

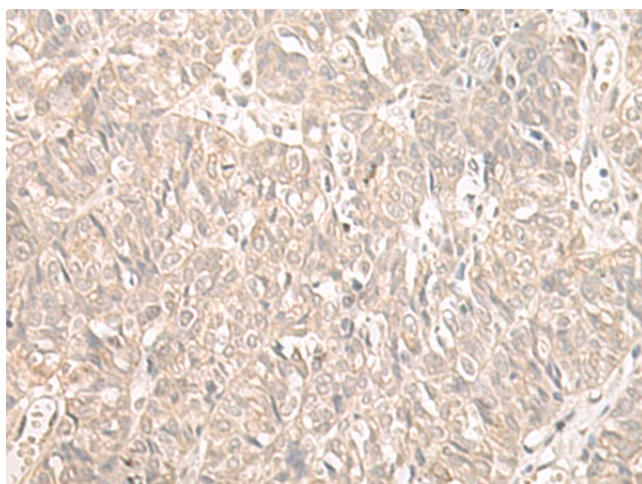
Lysate: 40 μ g

Lane 1-2: HeLa and 293T cell lysates

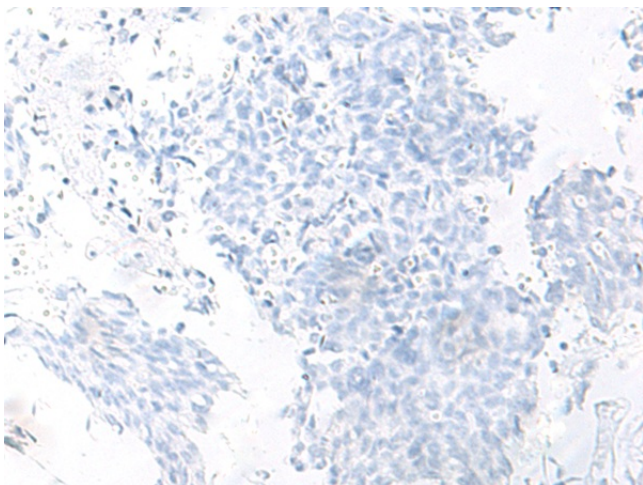
Primary antibody: TA365826 (ILKAP Antibody) at dilution 1/800

Secondary antibody: Goat anti rabbit IgG at 1/8000 dilution

Exposure time: 1 minute



Immunohistochemistry of paraffin-embedded Human ovarian cancer tissue using TA365826 (ILKAP Antibody) at dilution 1/55 (Original magnification: \times 200)



Immunohistochemistry of paraffin-embedded Human ovarian cancer tissue using TA365826 (ILKAP Antibody) at dilution 1/55, treated with fusion protein. (Original magnification: ×200)