

Product datasheet for **TA365816**

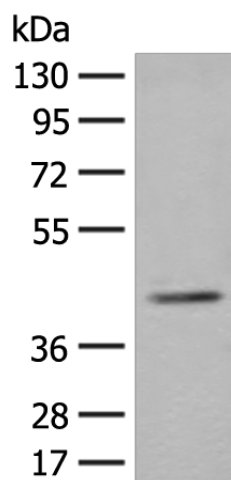
ERGIC3 Rabbit Polyclonal Antibody

Product data:

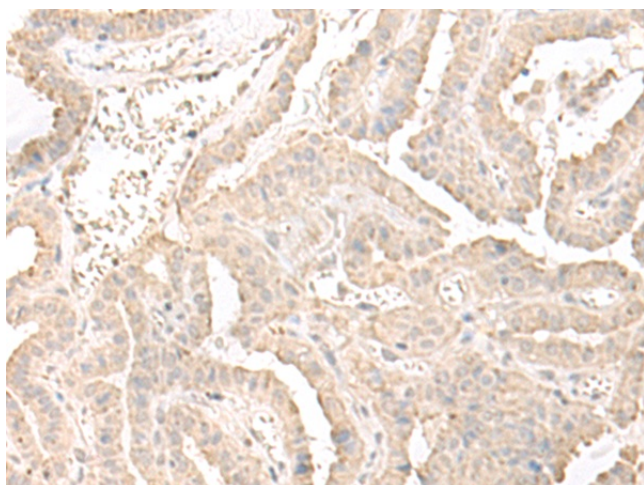
Product Type:	Primary Antibodies
Applications:	IHC, WB
Recommended Dilution:	WB: 500-2000 WB positive control: K562 cell lysate IHC: 50-300 Positive control: Human thyroid cancer Predicted cell location: Cytoplasm
Reactivity:	Human, Mouse
Host:	Rabbit
Isotype:	IgG
Clonality:	Polyclonal
Immunogen:	Fusion protein of human ERGIC3
Formulation:	pH7.4 PBS, 0.05% NaN ₃ , 40% Glycerol
Concentration:	lot specific
Purification:	Antigen affinity purification
Conjugation:	Unconjugated
Storage:	Store at -20°C.
Stability:	1 year
Predicted Protein Size:	43 kDa
Gene Name:	ERGIC and golgi 3
Database Link:	Entrez Gene 51614 Human Q9Y282
Background:	Possible role in transport between endoplasmic reticulum and Golgi.
Synonyms:	C20orf47; CGI-54; dj47704.2; Erv46; NY-BR-84; PRO0989; SDBCAG84



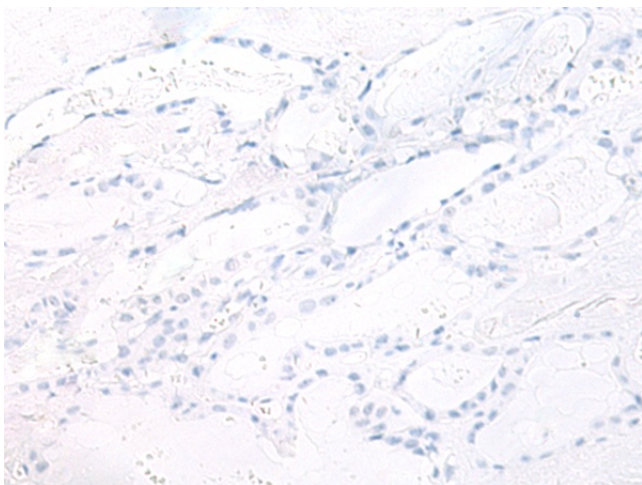
[View online »](#)

Product images:

Gel: 8%SDS-PAGE
Lysate: 40 μ g
Lane: K562 cell lysate
Primary antibody: TA365816 (ERGIC3 Antibody) at dilution 1/400
Secondary antibody: Goat anti rabbit IgG at 1/8000 dilution
Exposure time: 20 seconds



Immunohistochemistry of paraffin-embedded Human thyroid cancer tissue using TA365816 (ERGIC3 Antibody) at dilution 1/50 (Original magnification: \times 200)



Immunohistochemistry of paraffin-embedded Human thyroid cancer tissue using TA365816 (ERGIC3 Antibody) at dilution 1/50, treated with fusion protein. (Original magnification: ×200)