

## Product datasheet for **TA365815S**

### ACTC1 Rabbit Polyclonal Antibody

#### Product data:

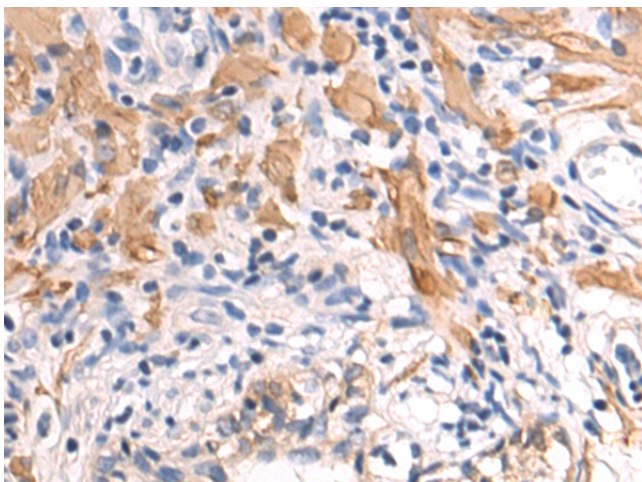
|                       |  |
|-----------------------|--|
| Product Type:         | Primary Antibodies   |
| Applications:         | IHC  |
| Recommended Dilution: | IHC: 50-200<br>Positive control: Human prostate cancer<br>Predicted cell location: Cytoplasm |
| Reactivity:           | Human, Mouse, Rat  |
| Host:                 | Rabbit   |
| Isotype:              | IgG  |
| Clonality:            | Polyclonal   |
| Immunogen:            | Fusion protein of human ACTC1  |
| Formulation:          | pH7.4 PBS, 0.05% NaN <sub>3</sub> , 40% Glycerol   |
| Purification:         | Antigen affinity purification  |
| Conjugation:          | Unconjugated   |
| Storage:              | Store at -20°C.  |
| Stability:            | 1 year   |
| Gene Name:            | actin, alpha, cardiac muscle 1   |
| Database Link:        | <a href="#">Entrez Gene 70 Human P68032</a>  |

**Background:** Actins are highly conserved proteins that are involved in various types of cell motility. Polymerization of globular actin (G-actin) leads to a structural filament (F-actin) in the form of a two-stranded helix. Each actin can bind to four others. The protein encoded by this gene belongs to the actin family which is comprised of three main groups of actin isoforms, alpha, beta, and gamma. The alpha actins are found in muscle tissues and are a major constituent of the contractile apparatus. Defects in this gene have been associated with idiopathic dilated cardiomyopathy (IDC) and familial hypertrophic cardiomyopathy (FHC).

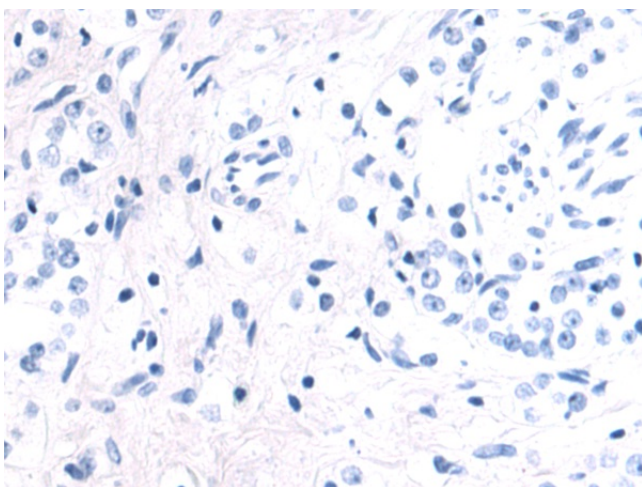
**Synonyms:** ACTC; ASD5; CMD1R; CMH11



[View online »](#)

**Product images:**

Immunohistochemistry of paraffin-embedded Human prostate cancer tissue using [TA365815] (ACTC1 Antibody) at dilution 1/65 (Original magnification: ×200)



Immunohistochemistry of paraffin-embedded Human prostate cancer tissue using [TA365815] (ACTC1 Antibody) at dilution 1/65, treated with fusion protein. (Original magnification: ×200)