

## Product datasheet for **TA365805S**

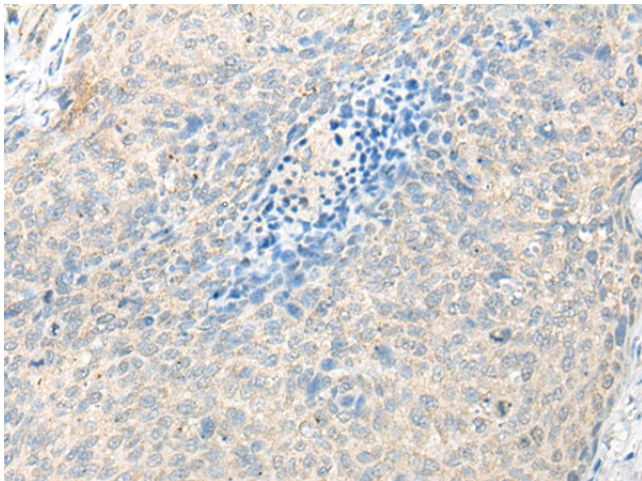
### STOML2 Rabbit Polyclonal Antibody

#### Product data:

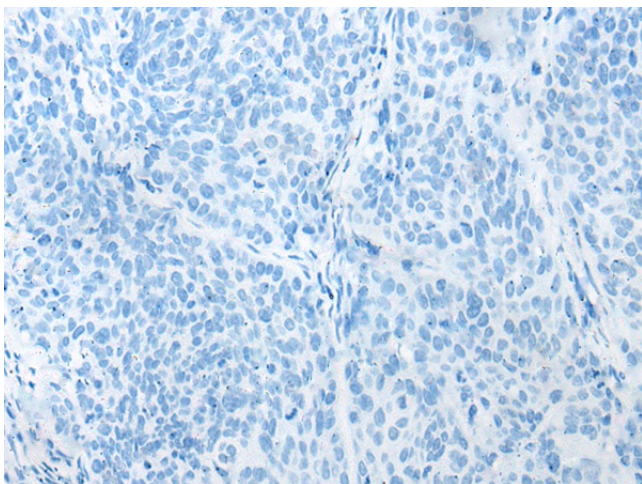
Product Type:	Primary Antibodies
Applications:	IHC
Recommended Dilution:	IHC: 25-100 Positive control: Human cervical cancer Predicted cell location: Cytoplasm
Reactivity:	Human, Mouse, Rat
Host:	Rabbit
Isotype:	IgG
Clonality:	Polyclonal
Immunogen:	Fusion protein of human STOML2
Formulation:	pH7.4 PBS, 0.05% NaN <sub>3</sub> , 40% Glycerol
Purification:	Antigen affinity purification
Conjugation:	Unconjugated
Storage:	Store at -20°C.
Stability:	1 year
Gene Name:	stomatin like 2
Database Link:	<a href="#">Entrez Gene 30968 Human Q9UJZ1</a>
Background:	Stomatin-like protein 2 (STOML2), SLP-2 or EPB72-like 2, is a 356 amino acid member of the mec-2 family of proteins. Expressed ubiquitously at low levels, STOML2 is highly expressed in heart, liver and pancreas. STOML2 is localized to the cytoplasm with some distribution on the membrane. STOML2 was first identified as an overexpressed protein in human endometrial adenocarcinoma. Changes in cell growth in samples with different levels of STOML2 indicate that STOML2 could play a role in endometrial tumorigenesis. STOML2 is also thought to play a role in regulating ion channel conductances or the organization of sphingolipid and cholesterol-rich lipid rafts.
Synonyms:	HSPC108; SLP-2; SLP2



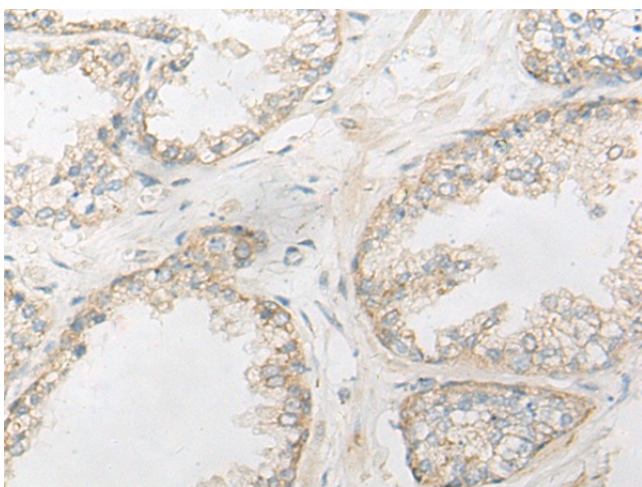
[View online »](#)

**Product images:**

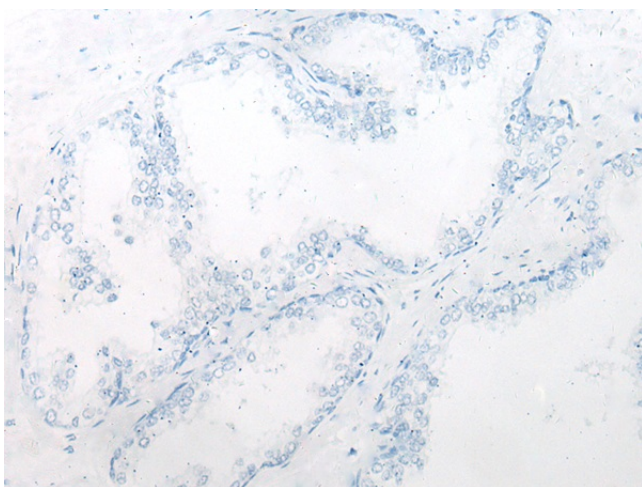
Immunohistochemistry of paraffin-embedded Human cervical cancer tissue using [TA365805] (STOML2 Antibody) at dilution 1/25 (Original magnification: ×200)



Immunohistochemistry of paraffin-embedded Human cervical cancer tissue using [TA365805] (STOML2 Antibody) at dilution 1/25, treated with fusion protein. (Original magnification: ×200)



Immunohistochemistry of paraffin-embedded Human prostate cancer tissue using [TA365805] (STOML2 Antibody) at dilution 1/25 (Original magnification: ×200)



Immunohistochemistry of paraffin-embedded Human prostate cancer tissue using [TA365805] (STOML2 Antibody) at dilution 1/25, treated with fusion protein. (Original magnification: ×200)