

## Product datasheet for **TA365795S**

### SLFN5 Rabbit Polyclonal Antibody

#### Product data:

|                       |  |
|-----------------------|--|
| Product Type:         | Primary Antibodies   |
| Applications:         | IHC  |
| Recommended Dilution: | IHC: 25-100<br>Positive control: Human colorectal cancer<br>Predicted cell location: Nucleus |
| Reactivity:           | Human  |
| Host:                 | Rabbit   |
| Isotype:              | IgG  |
| Clonality:            | Polyclonal   |
| Immunogen:            | Fusion protein of human SLFN5  |
| Formulation:          | pH7.4 PBS, 0.05% NaN <sub>3</sub> , 40% Glycerol   |
| Purification:         | Antigen affinity purification  |
| Conjugation:          | Unconjugated   |
| Storage:              | Store at -20°C.  |
| Stability:            | 1 year   |
| Gene Name:            | schlafen family member 5   |
| Database Link:        | <a href="#">Entrez Gene 162394 Human Q08AF3</a>  |

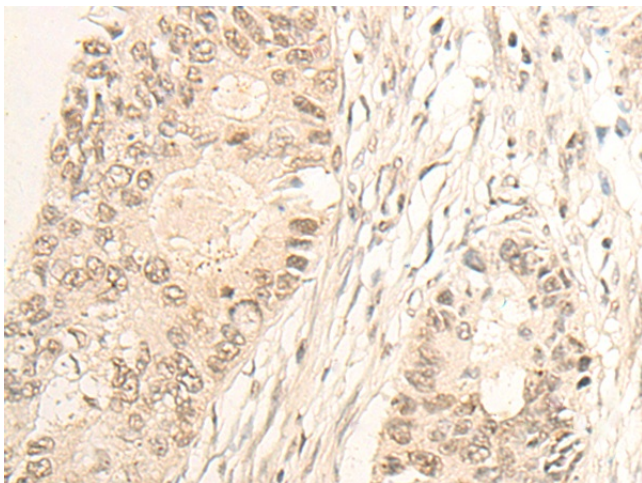
**Background:** Slfn5 (schlafen family member 5) is an 891 amino acid protein that exists as multiple alternatively spliced isoforms and is thought to play a role in hematopoietic cell differentiation. The gene encoding Slfn5 maps to human chromosome 17, which comprises over 2.5% of the human genome and encodes over 1,200 genes. Two key tumor suppressor genes are associated with chromosome 17, namely, p53 and BRCA1. Tumor suppressor p53 is necessary for maintenance of cellular genetic integrity by moderating cell fate through DNA repair versus cell death. Malfunction or loss of p53 expression is associated with malignant cell growth and Li-Fraumeni syndrome. Like p53, BRCA1 is directly involved in DNA repair, though specifically it is recognized as a genetic determinant of early onset breast cancer and predisposition to cancers of the ovary, colon, prostate gland and fallopian tubes.



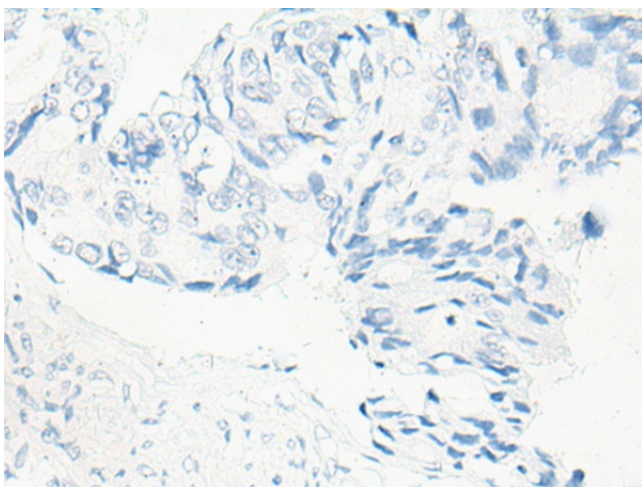
[View online »](#)

Synonyms: MGC19764; MGC150611; MGC150612

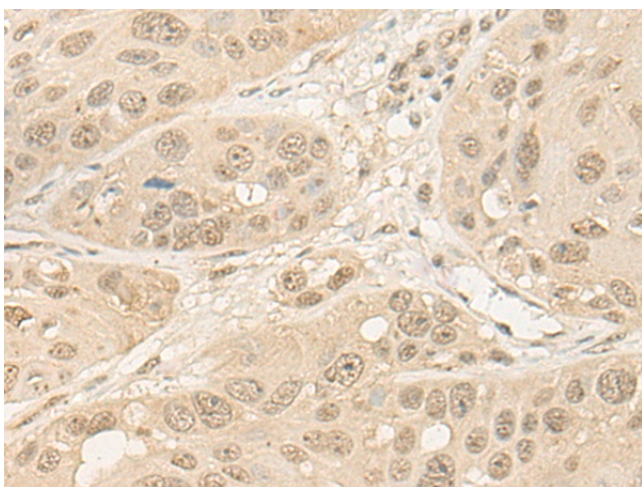
### Product images:



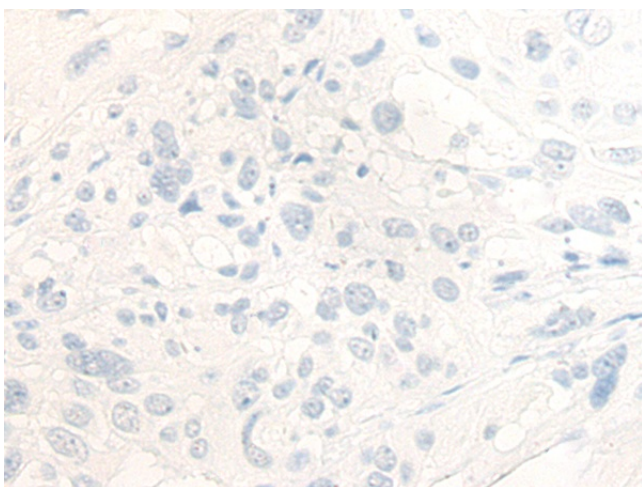
Immunohistochemistry of paraffin-embedded Human colorectal cancer tissue using [TA365795] (SLFN5 Antibody) at dilution 1/20 (Original magnification: x200)



Immunohistochemistry of paraffin-embedded Human colorectal cancer tissue using [TA365795] (SLFN5 Antibody) at dilution 1/20, treated with fusion protein. (Original magnification: x200)



Immunohistochemistry of paraffin-embedded Human esophagus cancer tissue using [TA365795] (SLFN5 Antibody) at dilution 1/20 (Original magnification:  $\times 200$ )



Immunohistochemistry of paraffin-embedded Human esophagus cancer tissue using [TA365795] (SLFN5 Antibody) at dilution 1/20, treated with fusion protein. (Original magnification:  $\times 200$ )