

## Product datasheet for **TA365788**

### **C7orf42 (TMEM248) Rabbit Polyclonal Antibody**

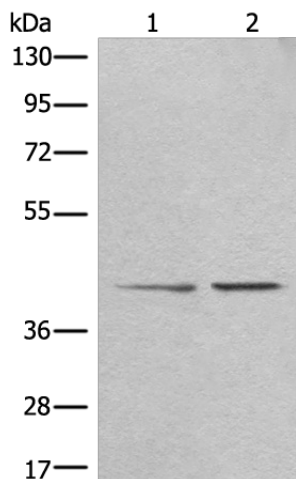
#### **Product data:**

Product Type:	Primary Antibodies
Applications:	IHC, WB
Recommended Dilution:	WB: 500-2000 WB positive control: A172 and HEPG2 cell lysates IHC: 25-100 Positive control: Human thyroid cancer Predicted cell location: Cytoplasm
Reactivity:	Human, Mouse, Rat
Host:	Rabbit
Isotype:	IgG
Clonality:	Polyclonal
Immunogen:	Fusion protein of human TMEM248
Formulation:	pH7.4 PBS, 0.05% NaN <sub>3</sub> , 40% Glycerol
Concentration:	lot specific
Purification:	Antigen affinity purification
Conjugation:	Unconjugated
Storage:	Store at -20°C.
Stability:	1 year
Predicted Protein Size:	35 kDa
Gene Name:	transmembrane protein 248
Database Link:	<a href="#">Entrez Gene 55069 Human Q9NWD8</a>
Background:	The function of this protein remains unknown.
Synonyms:	0610007L01Rik; A930023A16Rik; AW557951; G430067H08Rik; Tmem248

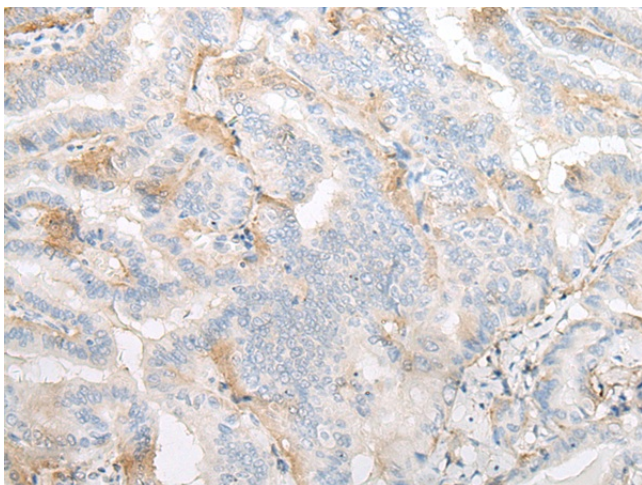


[View online »](#)

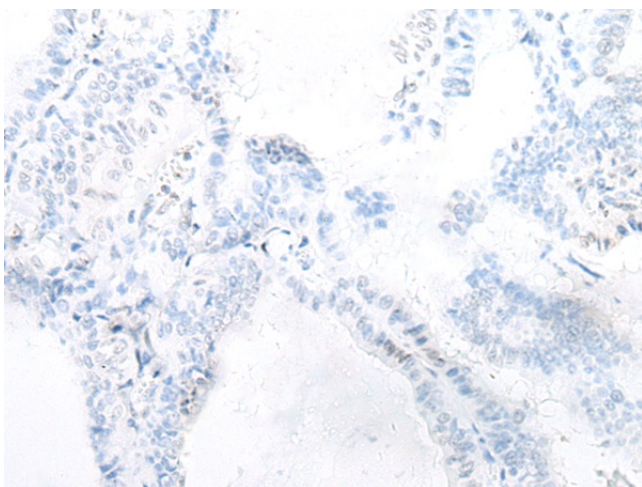
## Product images:



Gel: 8%SDS-PAGE  
Lysate: 40  $\mu$ g  
Lane 1-2: A172 and HEPG2 cell lysates  
Primary antibody: TA365788 (TMEM248 Antibody) at dilution 1/300  
Secondary antibody: Goat anti rabbit IgG at 1/8000 dilution  
Exposure time: 5 seconds



Immunohistochemistry of paraffin-embedded Human thyroid cancer tissue using TA365788 (TMEM248 Antibody) at dilution 1/25 (Original magnification:  $\times 200$ )



Immunohistochemistry of paraffin-embedded Human thyroid cancer tissue using TA365788 (TMEM248 Antibody) at dilution 1/25, treated with fusion protein. (Original magnification: ×200)