

Product datasheet for **TA365783S**

MRPL1 Rabbit Polyclonal Antibody

Product data:

Product Type:	Primary Antibodies
Applications:	WB
Recommended Dilution:	WB: 200-1000 WB positive control: Jurkat□231□HEPG2 and K562 cell lysates
Reactivity:	Human
Host:	Rabbit
Isotype:	IgG
Clonality:	Polyclonal
Immunogen:	Fusion protein of human MRPL1
Formulation:	pH7.4 PBS, 0.05% NaN ₃ , 40% Glycerol
Purification:	Antigen affinity purification
Conjugation:	Unconjugated
Storage:	Store at -20°C.
Stability:	1 year
Predicted Protein Size:	37 kDa
Gene Name:	mitochondrial ribosomal protein L1
Database Link:	Entrez Gene 65008 Human Q9BYD6

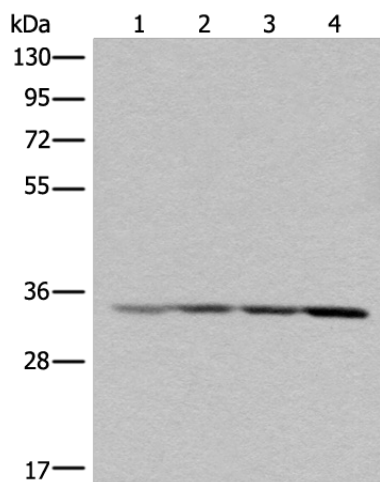
Background: Mammalian mitochondrial ribosomal proteins are encoded by nuclear genes and help in protein synthesis within the mitochondrion. Mitochondrial ribosomes (mitoribosomes) consist of a small 28S subunit and a large 39S subunit. They have an estimated 75% protein to rRNA composition compared to prokaryotic ribosomes, where this ratio is reversed. Another difference between mammalian mitoribosomes and prokaryotic ribosomes is that the latter contain a 5S rRNA. Among different species, the proteins comprising the mitoribosome differ greatly in sequence, and sometimes in biochemical properties, which prevents easy recognition by sequence homology. This gene encodes a 39S subunit protein that belongs to the L1 ribosomal protein family.

Synonyms: BM022; FLJ96680; L1MT; MRP-L1



[View online »](#)

Product images:



Gel: 8%SDS-PAGE

Lysate: 40 μ g

Lane 1-4: Jurkat

231

HEPG2 and K562 cell lysates

Primary antibody: [TA365783] (MRPL1 Antibody)
at dilution 1/250

Secondary antibody: Goat anti rabbit IgG at
1/8000 dilution

Exposure time: 7 seconds