

Product datasheet for **TA365779S**

GK5 Rabbit Polyclonal Antibody

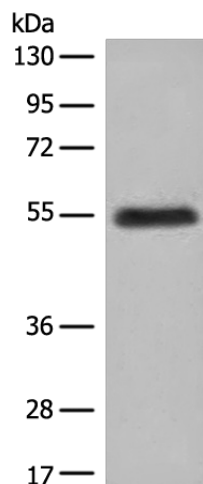
Product data:

Product Type:	Primary Antibodies
Applications:	IHC, WB
Recommended Dilution:	WB: 200-1000 WB positive control: Human breast cancer tissue lysate IHC: 20-100 Positive control: Human esophagus cancer Predicted cell location: Cytoplasm and Nucleus
Reactivity:	Human
Host:	Rabbit
Isotype:	IgG
Clonality:	Polyclonal
Immunogen:	Full length fusion protein
Formulation:	pH7.4 PBS, 0.05% NaN ₃ , 40% Glycerol
Purification:	Antigen affinity purification
Conjugation:	Unconjugated
Storage:	Store at -20°C.
Stability:	1 year
Predicted Protein Size:	59 kDa
Gene Name:	glycerol kinase 5 (putative)
Database Link:	Entrez Gene 256356 Human Q6ZS86
Background:	GK5(Putative glycerol kinase 5) is also named as ATP:glycerol 3-phosphotransferase 5 and belongs to the FGGY kinase family.It is involved in Glycerol metabolism and catalyzes the phosphorylation of glycerol by ATP, yielding ADP and glycerol-3-phosphate.It has 3 isoforms produced by alternative splicing with the MW of 59 kDa, 34 kDa and 28 kDa.
Synonyms:	FLJ33582; FLJ45739; MGC40579



[View online »](#)

Product images:



Gel: 8%SDS-PAGE

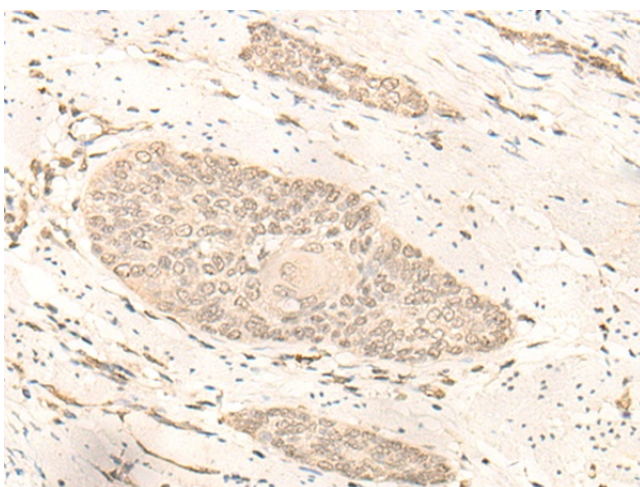
Lysate: 40 μ g

Lane: Human breast cancer tissue lysate

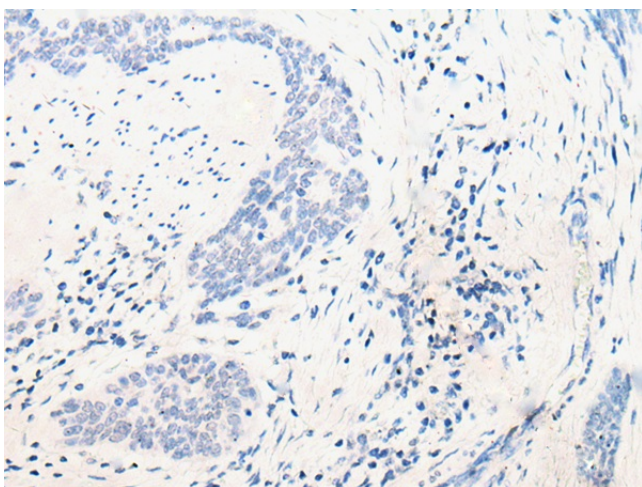
Primary antibody: [TA365779] (GK5 Antibody) at dilution 1/250

Secondary antibody: Goat anti rabbit IgG at 1/8000 dilution

Exposure time: 5 minutes



Immunohistochemistry of paraffin-embedded Human esophagus cancer tissue using [TA365779] (GK5 Antibody) at dilution 1/20 (Original magnification: \times 200)



Immunohistochemistry of paraffin-embedded Human esophagus cancer tissue using [TA365779] (GK5 Antibody) at dilution 1/20, treated with fusion protein. (Original magnification: $\times 200$)