

## Product datasheet for **TA365779**

### GK5 Rabbit Polyclonal Antibody

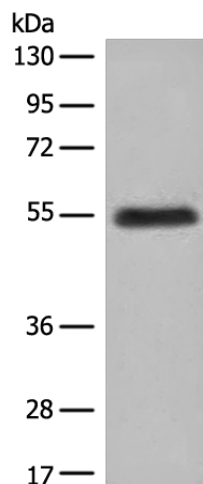
#### Product data:

|                         |   |
|-------------------------|---|
| Product Type:           | Primary Antibodies  |
| Applications:           | IHC, WB   |
| Recommended Dilution:   | WB: 200-1000<br>WB positive control: Human breast cancer tissue lysate<br>IHC: 20-100<br>Positive control: Human esophagus cancer<br>Predicted cell location: Cytoplasm and Nucleus   |
| Reactivity:             | Human   |
| Host:                   | Rabbit  |
| Isotype:                | IgG   |
| Clonality:              | Polyclonal  |
| Immunogen:              | Full length fusion protein  |
| Formulation:            | pH7.4 PBS, 0.05% NaN <sub>3</sub> , 40% Glycerol  |
| Concentration:          | lot specific  |
| Purification:           | Antigen affinity purification   |
| Conjugation:            | Unconjugated  |
| Storage:                | Store at -20°C.   |
| Stability:              | 1 year  |
| Predicted Protein Size: | 59 kDa  |
| Gene Name:              | glycerol kinase 5 (putative)  |
| Database Link:          | <a href="#">Entrez Gene 256356 Human Q6ZS86</a>   |
| Background:             | GK5(Putative glycerol kinase 5) is also named as ATP:glycerol 3-phosphotransferase 5 and belongs to the FGGY kinase family.It is involved in Glycerol metabolism and catalyzes the phosphorylation of glycerol by ATP, yielding ADP and glycerol-3-phosphate.It has 3 isoforms produced by alternative splicing with the MW of 59 kDa, 34 kDa and 28 kDa. |
| Synonyms:               | FLJ33582; FLJ45739; MGC40579  |

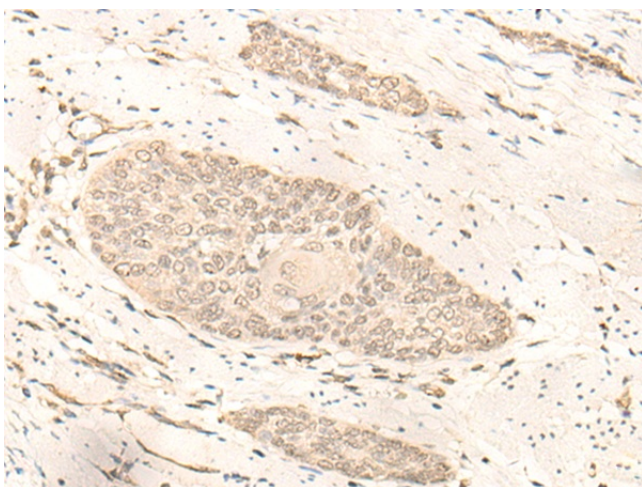


[View online »](#)

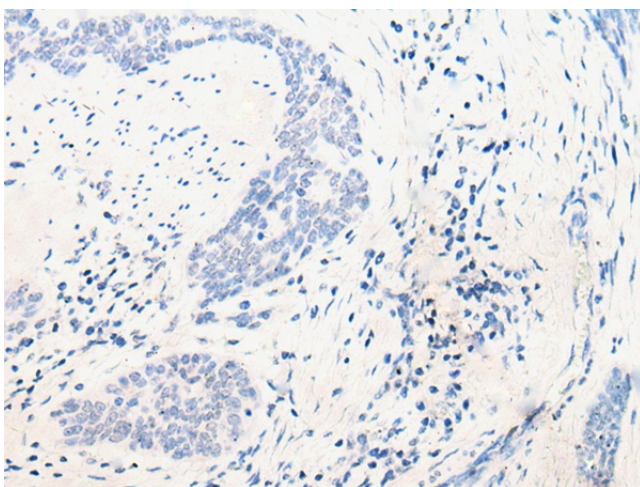
## Product images:



Gel: 8%SDS-PAGE  
Lysate: 40  $\mu$ g  
Lane: Human breast cancer tissue lysate  
Primary antibody: TA365779 (GK5 Antibody) at dilution 1/250  
Secondary antibody: Goat anti rabbit IgG at 1/8000 dilution  
Exposure time: 5 minutes



Immunohistochemistry of paraffin-embedded Human esophagus cancer tissue using TA365779 (GK5 Antibody) at dilution 1/20 (Original magnification:  $\times$ 200)



Immunohistochemistry of paraffin-embedded Human esophagus cancer tissue using TA365779 (GK5 Antibody) at dilution 1/20, treated with fusion protein. (Original magnification: ×200)