

## Product datasheet for **TA365774S**

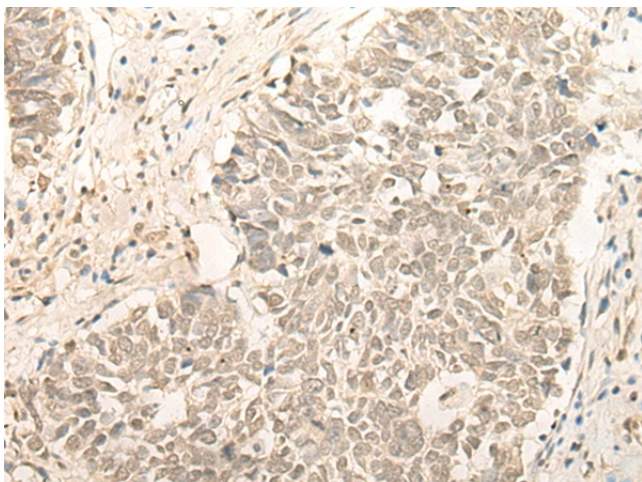
### **RBM11 Rabbit Polyclonal Antibody**

#### **Product data:**

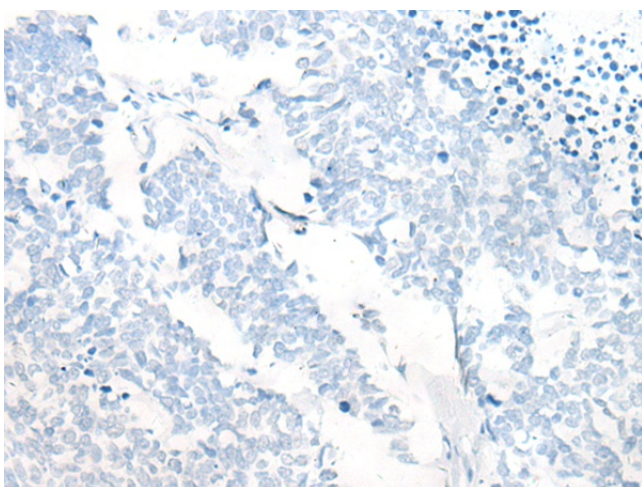
Product Type:	Primary Antibodies
Applications:	IHC
Recommended Dilution:	IHC: 25-100 Positive control: Human lung cancer Predicted cell location: Nucleus
Reactivity:	Human
Host:	Rabbit
Isotype:	IgG
Clonality:	Polyclonal
Immunogen:	Fusion protein of human RBM11
Formulation:	pH7.4 PBS, 0.05% NaN <sub>3</sub> , 40% Glycerol
Purification:	Antigen affinity purification
Conjugation:	Unconjugated
Storage:	Store at -20°C.
Stability:	1 year
Gene Name:	RNA binding motif protein 11
Database Link:	<a href="#">Entrez Gene 54033 Human P57052</a>
Background:	Tissue-specific splicing factor with potential implication in the regulation of alternative splicing during neuron and germ cell differentiation. Antagonizes SRSF1-mediated BCL-X splicing. May affect the choice of alternative 5' splice sites by binding to specific sequences in exons and antagonizing the SR protein SRSF1.
Synonyms:	RBM11



[View online »](#)

**Product images:**

Immunohistochemistry of paraffin-embedded Human lung cancer tissue using [TA365774] (RBM11 Antibody) at dilution 1/20 (Original magnification:  $\times 200$ )



Immunohistochemistry of paraffin-embedded Human lung cancer tissue using [TA365774] (RBM11 Antibody) at dilution 1/20, treated with fusion protein. (Original magnification:  $\times 200$ )