

Product datasheet for **TA365772S**

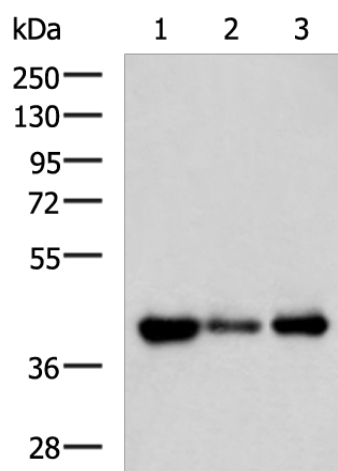
SH3GL2 Rabbit Polyclonal Antibody

Product data:

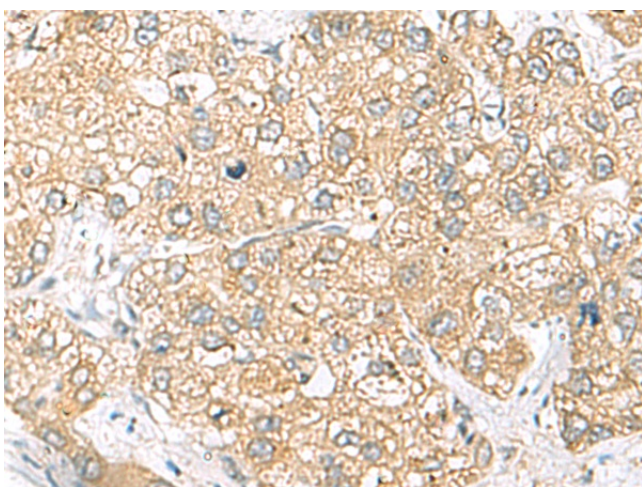
Product Type:	Primary Antibodies
Applications:	IHC, WB
Recommended Dilution:	WB: 500-2000 WB positive control: Human cerebella tissue, Mouse brain tissue, Human cerebrum tissue lysates IHC: 50-100 Positive control: Human liver cancer Predicted cell location: Cytoplasm
Reactivity:	Human, Mouse, Rat
Host:	Rabbit
Isotype:	IgG
Clonality:	Polyclonal
Immunogen:	Fusion protein of human SH3GL2
Formulation:	pH7.4 PBS, 0.05% NaN ₃ , 40% Glycerol
Purification:	Antigen affinity purification
Conjugation:	Unconjugated
Storage:	Store at -20°C.
Stability:	1 year
Predicted Protein Size:	40 kDa
Gene Name:	SH3 domain containing GRB2 like 2, endophilin A1
Database Link:	Entrez Gene 6456 Human Q99962
Background:	Implicated in synaptic vesicle endocytosis. May recruit other proteins to membranes with high curvature. Required for BDNF-dependent dendrite outgrowth. Cooperates with SH3GL2 to mediate BDNF-NTRK2 early endocytic trafficking and signaling from early endosomes.
Synonyms:	CNSA2; EEN-B1; Endophilin-1; FLJ20276; FLJ25015; SH3D2A; SH3P4



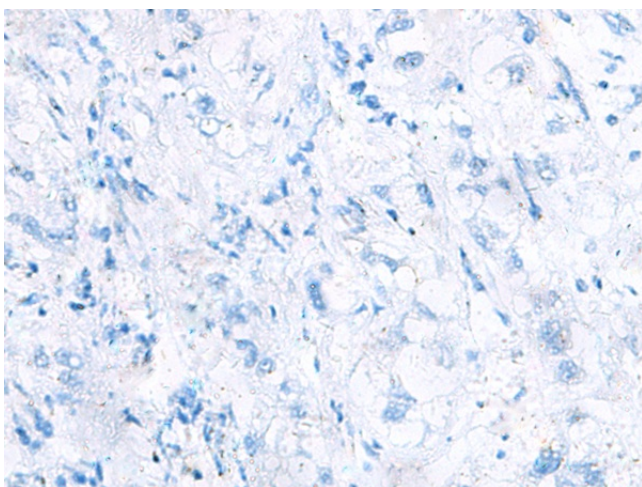
[View online »](#)

Product images:


Gel: 8%SDS-PAGE
 Lysate: 40 μ g
 Lane 1-3: Human cerebella tissue
 Mouse brain tissue
 Human cerebrum tissue lysates
 Primary antibody: [TA365772] (SH3GL2 Antibody)
 at dilution 1/500
 Secondary antibody: Goat anti rabbit IgG at
 1/5000 dilution
 Exposure time: 3 seconds



Immunohistochemistry of paraffin-embedded
 Human liver cancer tissue using [TA365772]
 (SH3GL2 Antibody) at dilution 1/45 (Original
 magnification: \times 200)



Immunohistochemistry of paraffin-embedded Human liver cancer tissue using [TA365772] (SH3GL2 Antibody) at dilution 1/45, treated with fusion protein. (Original magnification: ×200)